



**NOTICE OF APPROVAL  
AVIS D'APPROBATION**

S.WA-854

Ottawa, June 14, 1978

BROOKS - BI-ROTOR METERS - GROUP 5

MANUFACTURER: Brooks Instrument Division  
Emerson Electric Canada Ltd.  
Markham, Ontario

DEVICES APPROVED: Bulk liquid meters, models as listed below:

Model No.	Flow Rating		Maximum Pressure psi	Connections
	G.P.M.	L/M		
B-41C	16- 80	75-375	125	Inlet 2" Brodie, Outlet 2" thd.
B-41C-1	16- 80	75-375	125	2" Brodie comp. flanges
B-41C-6	16- 80	75-375	125	Inlet 2" Brodie, Outlet 2" thd.
B-51C	25-125	115-575	125	Inlet 2" Brodie, Outlet 2" thd.
B-51C-1	25-125	115-575	125	2" Brodie comp. flanges
B-51C-6	25-125	115-575	125	Inlet 2" Brodie, Outlet 2" thd.
B-61C	40-210	200-950	125	Inlet 3" Brodie, Outlet 3" thd.
B-61C-1	40-210	200-950	125	3" Brodie comp. flanges
B-61C-6	40-210	200-950	125	Inlet 3" Brodie, Outlet 3" thd.
B1-42	16- 80	75-375	125	Inlet 2" Brodie, Outlet 2" thd.

NOTE 1: These meters may be equipped with a Veeder Root register/  
printer or with any suitable and approved type of Brodimatic  
register recommended by the meter manufacturer.

NOTE 2: Depending upon the age of the meter, any of the above-  
listed meters may be marked with any of the following  
trade names -

BRODIE	BROOKS-BRODIE
ROCKWELL-BRODIE	BROOKS
ROCKWELL	

APPLICATION: The metering in trade of bulk quantities of crude oil  
and refined petroleum products.

DESCRIPTION: These meters are rotary, positive displacement type,  
utilizing a pair of meshing helically-fluted rotors operating in  
a measuring chamber. Double-case construction is used in order to  
prevent distortion of the metering chamber by line pressure or  
piping stresses.

DESCRIPTION: (continued)

Models B-41C, B-51C and B-61C include a check valve, a balanced shutoff valve and a close-coupled combination strainer/air eliminator for gravity flow. Models B-41C-6, B-51C-6 and B-61C-6 are identical to models B-41C, B-51C and B-61C respectively, but without the strainer/air eliminator.

Models B-41C-1, B-51C-1 and B61C-1 are designed primarily for pump/wet-hose operation and are without the balanced shutoff valve.

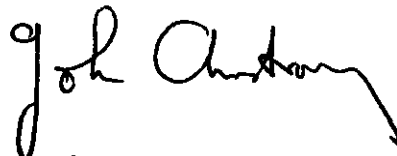
Model B1-42 is especially designed for use on pump-operated tank trucks, being equipped with a balanced shutoff valve, a close-coupled combination strainer/air eliminator and a preset register.

CONDITIONS: A meter shall be equipped by the manufacturer with a close/coupled combination strainer/air eliminator. This strainer/air eliminator shall not be removed except under circumstances approved by the Chief, Weights and Measures.

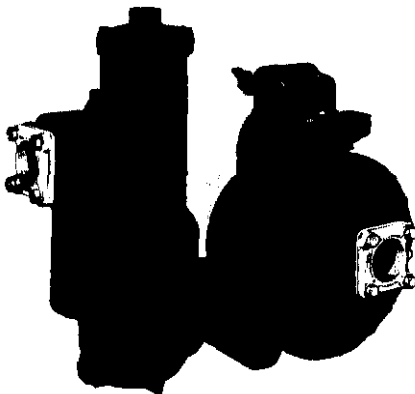
TESTING: The standard tests for bulk liquid meters shall apply.

REFERENCES: G6953-B365  
G6953-B365-12

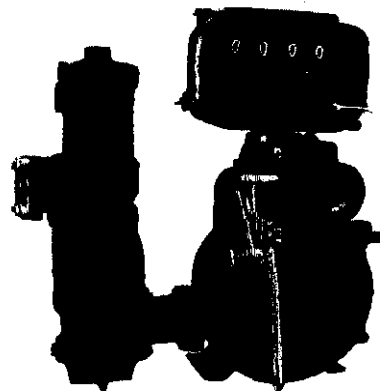
CONDITIONS OF APPROVAL: Approval is granted under the Weights and Measures Act, S.C. 1970-71-72, Chapter 36, and the Weights and Measures Regulations P.C. 1974-1461 of June 27, 1974 for use in Canada under the general conditions of the said Regulations, and under any special conditions listed above.



John Armstrong  
Chief, Weights and Measures  
Legal Metrology Branch



B-41C-1 or B-51C-1 with G Counter, left hand Strainer-Air Eliminator installation



Model B-41C or B-51C with Brodromatic Printing Quantrol