



Department of consumer and corporate affairs / Ministère de la consommation et des corporations



STANDARDS BRANCH - DIRECTION DES NORMES

NOTICE OF APPROVAL - AVIS D'APPROBATION

NO.
S.WA - 843
DATE
June 23, 1972

A. O. SMITH - MODELS FT4 AND GT6 METERS

Manufacturer: A. O. Smith Meter Systems,
Erie, Pennsylvania, U.S.A.

Apparatus Listed: Models FT4 size 4" and Models GT6 size 6"
liquid meters.

Rating: Models FT4: 120 to 600 gpm.
Models GT6: 200 to 1,000 gpm.

Application: The measurement of refined petroleum products
for filling trucks at bulk plants and for
refuelling large aircraft.

Description: These meters incorporate the same design of
metering elements as previously approved A.O.
Smith Meters. All meters in this series of
models are double-case construction. Inlet and
outlet port locations are designated as follows:

FT4-S1 and GT6-S1 Horizontal inlet and outlet
FT4-S3 and GT6-S3 on the same axis.

FT4-A1 and GT6-A1 Horizontal inlet and outlet
FT4-A3 and GT6-A3 90° apart.

FT4-V1 and GT6-V1 Vertical inlet and outlet on
the same axis.

These meters are re-rated versions of the meters
approved on S.WA - 615 and S.WA - 756.

Testing: The standard tests for a bulk meter shall apply.

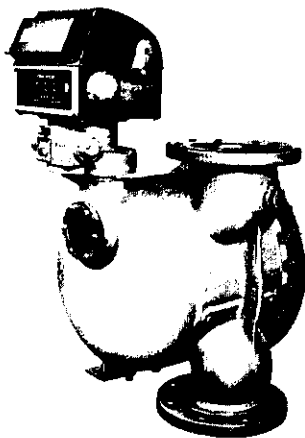
References: SW - 85 - S7
SL - 102 - 771
Letter of approval of August 18, 1971.

Conditions of Approval:

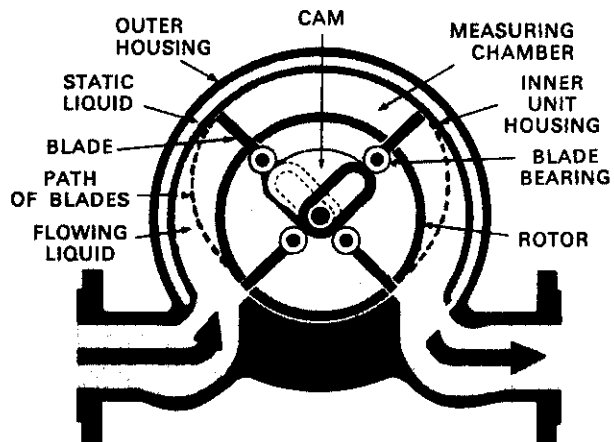
Approval is granted under the Weights and Measures Act, Chapter 292, and the Regulations thereunder (P.C. 6894) for use in Canada under the general conditions of P.C. 6894, and under any special conditions listed above.

[Signature]
(for) Chief,
Weights and Measures Division,
Standards Branch.

[Signature]
R. W. MacLean,
Director,
Standards Branch.



MODEL GT6-V1
DOUBLE CASE



DOUBLE CASE CONSTRUCTION