



DEPARTMENT OF TRADE AND COMMERCE  
STANDARDS BRANCH

OTTAWA, June 5, 1964.

APPROVAL LISTING

BENNETT - 3000 SERIES GASOLINE DISPENSERS

Under the provisions of the Weights and Measures Act, Chapter 292, R.S.C. 1952, and Regulations thereunder (P.C. 6894), the apparatus specified and illustrated herein have been listed as approved devices and may be used in Canada in accordance with the conditions applicable.

Apparatus Listed: Computing gasoline dispensers, model numbers as listed below:

<u>Description</u>	<u>Unlighted Model</u>	<u>Lighted Model</u>	<u>Capacity G.P.M.</u>
Suction pump, single product, centre pedestal, computer offset	3113	3013	11
Suction pump, single product, centre pedestal, computer on centre	3115	3015	11
Remote pump, single product centre pedestal, computer offset	3112	3012	13/15
Remote pump, single product, centre pedestal, computer on centre	3114	3014	13/15
Remote pump, single product twin, centre pedestal	3124	3024	13/15
Remote pump, two product twin, centre pedestal	3122	3022	13/15
Remote pump, single product inverted, L-shape pedestal	3110	3010	13/15
Remote pumps, two product twin inverted, L-shape pedestal	3120	3020	13/15

Manufactured by the John Wood Company Ltd., 101 Hanson Street, Toronto, Ontario.

Rating of Apparatus: The suction type pump unit is rated at 11 g.p.m. maximum and the remote pump unit at 13 g.p.m. with a 1/3 h.p. motor and 15 g.p.m. with 3/4 h.p. motor.

Conditions: As prescribed in P.C. 6894.

...../2

2

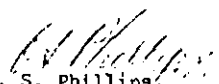
3

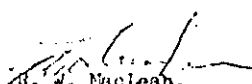
4

Application: Retail gasoline trade.

Description: These dispensers incorporate the same major components as the series 2000 dispensers approved on SD-WA-357 but the arrangement and piping has been changed to suit the new cabinets. Also, a Venturi type of sight glass is used, whereby the main flow by-passes the sight glass and only small tubes are connected to it. These models are approved equipped with glazed doors on the computer compartments or plastic faces. They may be fitted with porcelain, aluminum or stainless steel pedestal panels. They may incorporate either 3 or 4 figure (wheel) registers.

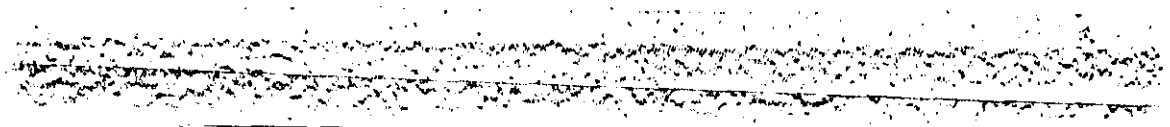
Testing: The standard tests for a retail gasoline dispenser shall apply.

  
C. S. Phillips,  
Chief, Weights and Measures Division,  
Standards Branch.

  
R. W. MacLean,  
Director,  
Standards Branch.

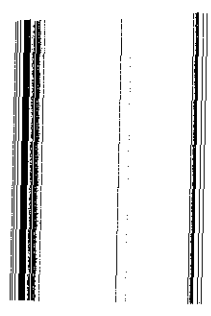
References: A-655  
A-735

---

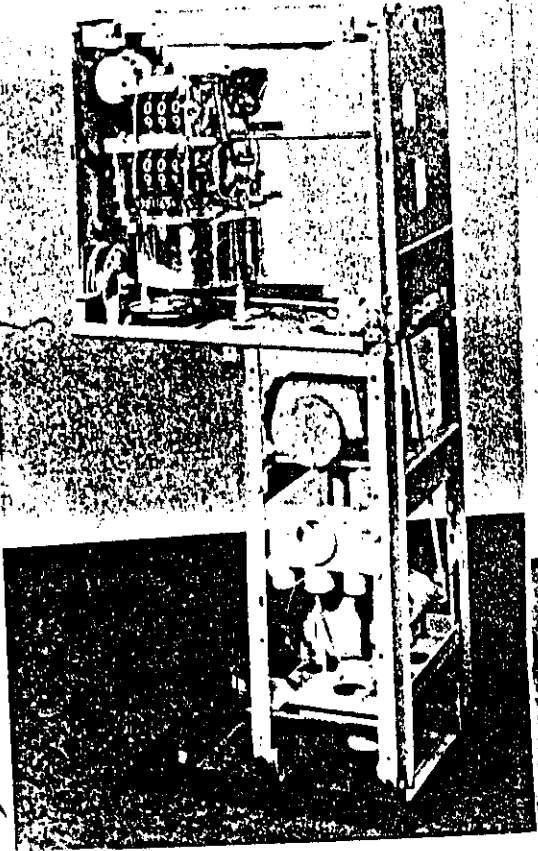


2

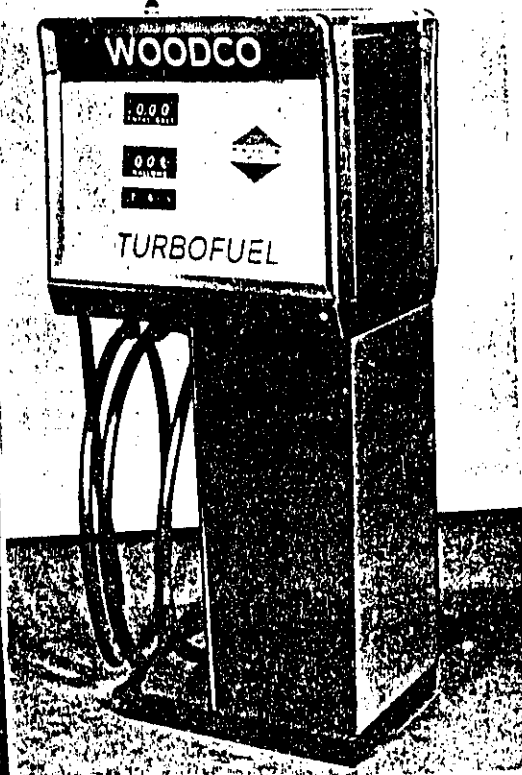
3



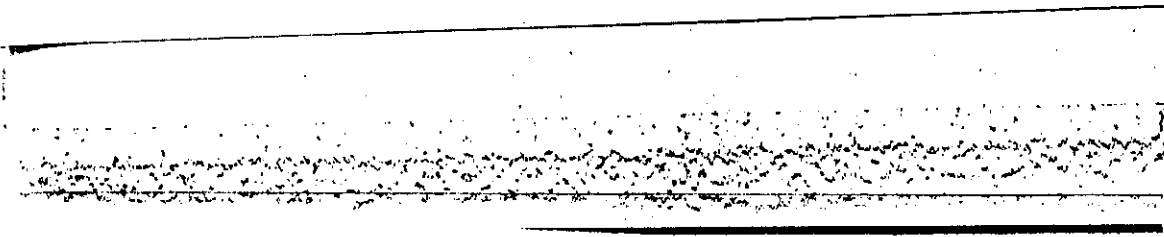
4



Model 3010



Model 3010



1

2

