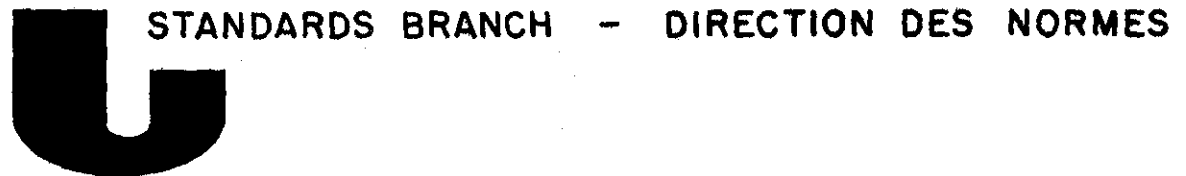




Department of consumer and corporate affairs / Ministère de la consommation et des corporations



NOTICE OF APPROVAL

G-89

OTTAWA May 26, 1972

PARKINSON COWAN (CANADA) LTD., TYPE K 250, STANDARD AND
TEMPERATURE COMPENSATED POSITIVE DISPLACEMENT GAS METERS

APPARATUS

Badged capacity	250 cu.ft./hr (air)
Differential pressure at badge capacity	0.5" w.c.
Capacity per revolution	0.111 cu. ft.
Maximum working pressure	5 psig
Test dial capacity, volume per revolution	½ and 2 cu. ft.
Tangent to 2 cu. ft. test dial revolution ratio	18:1
Base temperature for T.C. meters	60°F
Diaphragm material	Synthetic cloth supported
Meter connections, male	1"

DESCRIPTION

The type K-250 meter is of conventional design and it comprises the following main assemblies:

- (i) The die-cast aluminum case, partitioned in the middle, carries ball bearings for meter flag rods and acts as two diaphragm pans.
- (ii) The valve table assembly with two circular diaphragms carries moulded Bakelite valves and valve seats with associated links, sealed flag rods and flag arms linked with the double adjustable tangent and the worm wheel gearing arrangement to drive the meter register. This pre-assembled unit is sealed with a gasket and attached with screws to the meter case.

- (iii) The meter case cover assembly has a covered, rectangular access port for meter register, a stuffing box for sealing purposes and the meter connections with brass inserts.

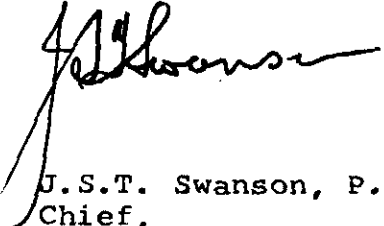
The temperature compensated meter incorporates in the valve table assembly a variable ratio friction drive arrangement between the crank shaft and index drive shaft. The ratio is varied by a temperature sensitive, bi-metallic element which positions the conical shaped drum against the fixed diameter, index driving, friction wheel in such a way that regardless of the flowing gas temperature, the registered volume by the index is always at 60°F base. Provision is incorporated, through an eccentric bushing, to adjust the position of the conical drum to ensure correct temperature compensation.


Each meter shall carry a nameplate, or plates, including the following information:

- 1) Manufacturer's name.
- 2) Type designation.
- 3) Rated capacity in cu. ft. per hour (air).
- 4) Capacity per revolution in cu. ft.
- 5) Serial number of the meter.
- 6) Inscription in red: "Temp. Comp. 60°F Base" on temperature compensated meters.

Approval granted to:

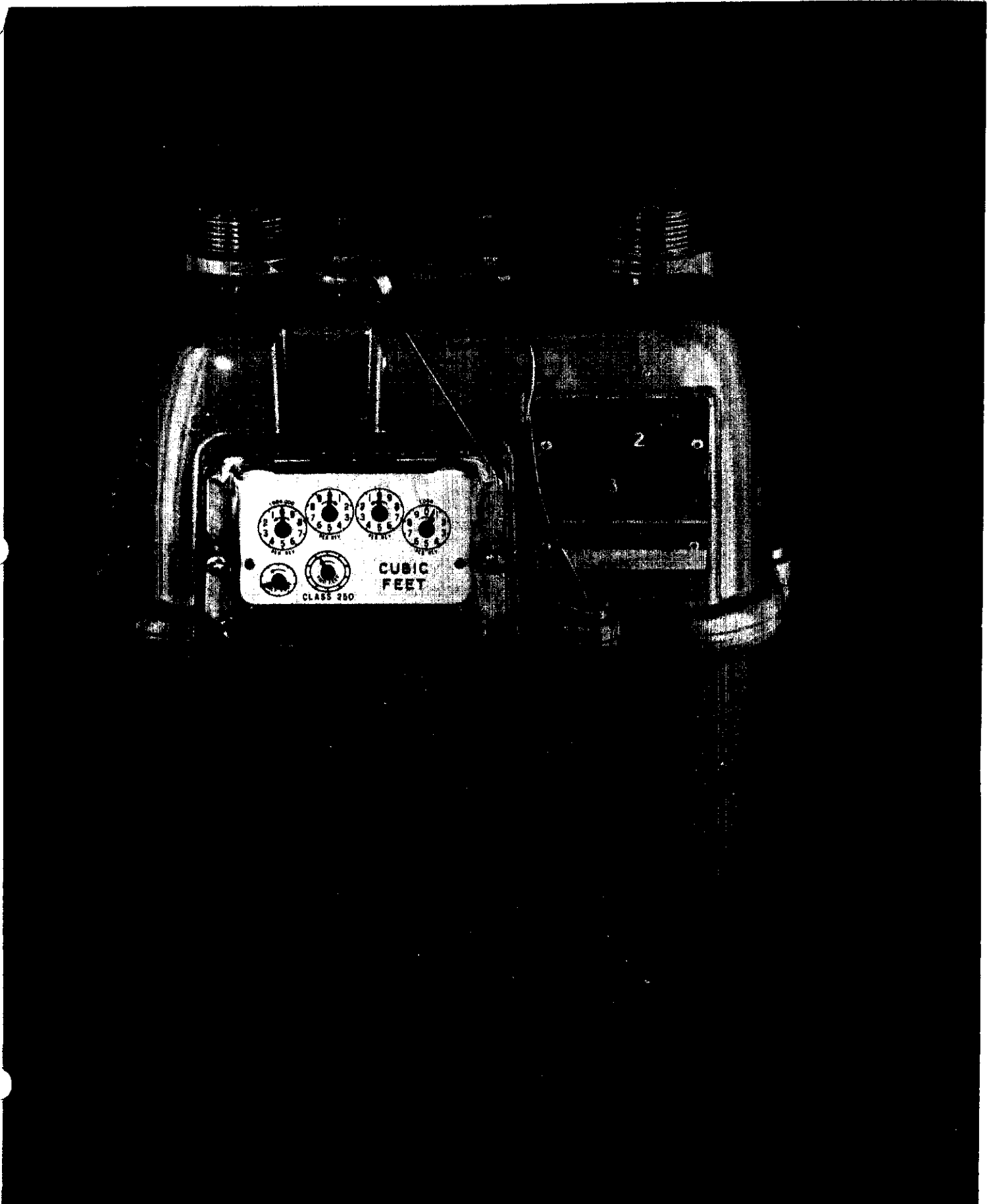
Parkinson Cowan (Canada) Ltd.,
Chatham, Ontario.


J.S.T. Swanson, P. Eng.,
Chief,
Standards Laboratory.


W.J.S. Fraser,
Chief, Electricity & Gas Division,
Standards Branch.

REF: SL-100-150

K-250 NON- COMP. METER



K-250 NON-COMP. AND T/C ASSEMBLIES

