



Consumer and
Corporate Affairs Canada

Consommation
et Corporations Canada

Legal Metrology
Branch

Direction de la
Métrologie légale

Holland Avenue
Ottawa, Ontario
K1A 0C9

Avenue Holland
Ottawa, Ontario
K1A 0C9

Your file *Votre référence*

Our file *Notre référence*

Telephone: (613)952-0635

File N°: 06635
Project: AP-GL-92-0039

Mr. Andy Peterson
Valgro Ltd.
3707 - 97th Street
Edmonton, Alberta
T6E 6J2

1992-11-17

Dear Sir,

This is in response to your recent notification given in accordance with the Electricity and Gas Regulations, Section 13, regarding devices approved under Notice of Approval AG-0336. It is noted that these devices are to be modified as follows:

- The QC-1 orifice fitting has design changes affecting:
- (i) the vent repressure valve assembly, and
 - (ii) the emergency injection assembly. (Refer to attached drawings).


I am advised by the Gas Metrology Laboratory that their evaluation of the proposed modifications indicates that they may be regarded as immaterial in relation to the approval provisions of the Act. Accordingly, your notification is acknowledged and the modifications are accepted as being included within the above-noted approval. All recipients of the approval notice are being informed by copy of this letter.

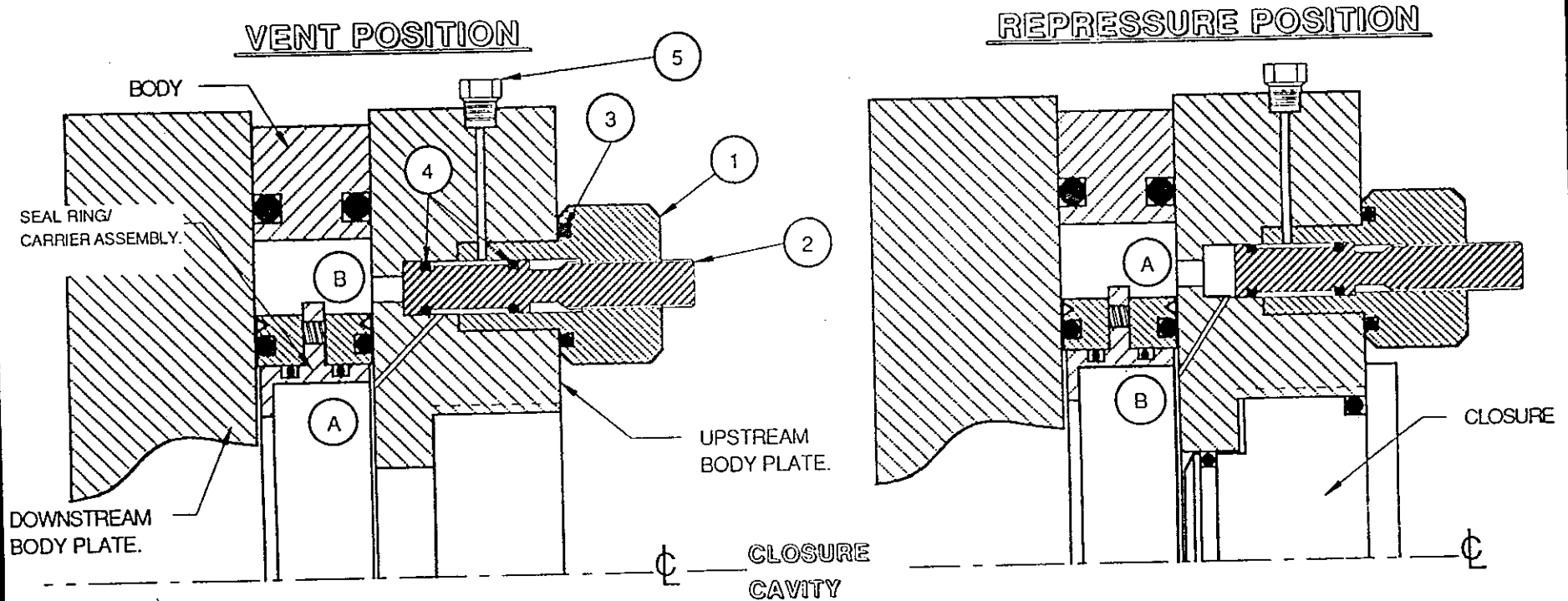
Yours truly,

H.L. Fraser, Chief
Electricity and Gas

cc: Approvals Mailing List

Canada


REV	DATE	DESCRIPTION OF CHANGES	BY	FOR MODEL	VENT REPRESSURE VALVE ASSEMBLY		370V00904	
				QC-1			DWG. No.	
				SCALE	DATE	DWN. BY	APPD	
				NTS	9/18/92	DESI TOAL		



NOTES:

- 1.) IN THE VENT POSITION, PRESSURE IS RELIEVED FROM THE CLOSURE CAVITY (A) THROUGH SLOTTED PLUG (5). O-RINGS PREVENT BODY CAVITY PRESSURE (B) FROM VENTING. THE CLOSURE MAY BE OPENED SAFELY, AFTER THE CLOSURE CAVITY IS VENTED.
- 2.) IN THE REPRESSURE POSITION, THE CLOSURE CAVITY (B) IS REPRESSURIZED FROM BODY CAVITY (A). O-RINGS PREVENT BODY PRESSURE (A) FROM VENTING. THE CARRIER SEAL RING MAY BE MOVED TO THE SERVICE POSITION.
- 3.) THE SLOTTED PLUG MAY BE REMOVED AND A VENT LINE INSTALLED BY THE OWNER
EQUIRED.

ITEM	PART NAME
1	BODY PLUG
2	VALVE
3	O-RING (PLUG SEAL)
4	O-RING (VENT SEAL)
5	PIPE PLUG, SLOTTED

REV	DATE	DESCRIPTION OF CHANGES	BY	FOR MODEL	EMERGENCY INJECTION ASSEMBLY			370V00903 DWG. No.
				QC-1				
				SCALE NTS	DATE 9/18/92	OWN BY DESI TOAL	APPD	 EDMONTON CALGARY

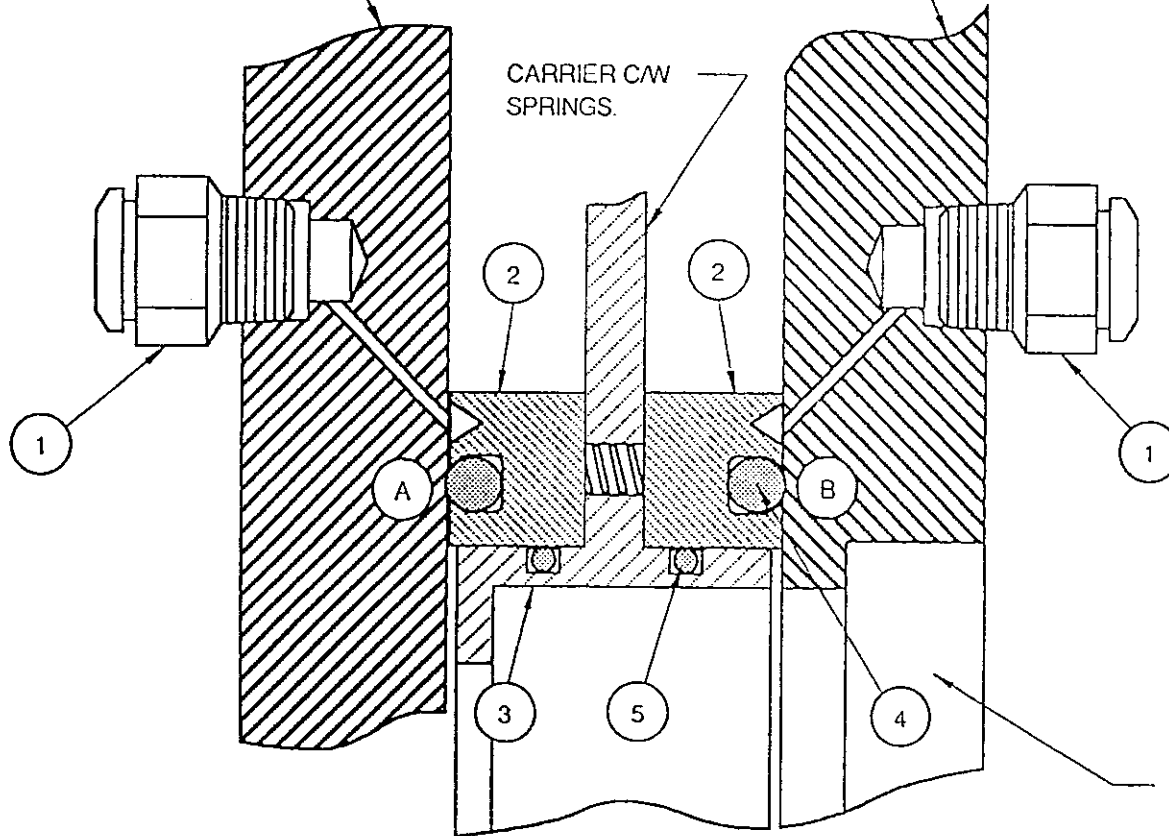
DOWNSTREAM
BODY PLATE.

UPSTREAM
BODY PLATE.

CARRIER CW
SPRINGS.

NOTES:

- 1.) EMERGENCY SEALANT CAN BE UTILIZED WHEN CARRIER IS IN THE SERVICE POSITION AND O-RING SEAL (A) OR (B) HAS FAILED. SEALANT IS PUMPED THROUGH SINGLE PORT INTO A V-SHAPED GROOVE, WHERE IT TRAVELS CIRCUMFERENTIALLY AROUND THE SEAL RING. OPTIONALLY, AN INJECTION FITTING CAN BE INSTALLED, VERSUS A GIANT BUTTON HEAD FITTING.
- 2.) SEAL RINGS ARE POSITIONED BY TWO LOCATING PINS WHICH EXTEND BETWEEN THE UPSTREAM AND DOWNSTREAM PLATE.



ITEM	PART NAME
1	GIANT BUTTON HEAD GREASE FITTING
2	SEAL RING
3	CARRIER
4	SEAL O-RING
5	SEAT GASKET O-RING

CLOSURE OPENING.

CARRIER IN SERVICE POSITION