



Department of consumer and corporate affairs / Ministère de la consommation et des corporations



STANDARDS BRANCH - DIRECTION DES NORMES

**NOTICE OF APPROVAL
AVIS D'APPROBATION**

T-102

OTTAWA March 8, 1976

ELECTROMAGNETIC INDUSTRIES TYPES CO3-110, CO3-150, AND
CO3-200 WOUND TYPE CURRENT TRANSFORMERS

Apparatus

Primary Currents

Single Ratio - all types above 10, 15, 40, 50, 75, 100, 150, 200,
300, 400, 600, 800 and 1200 amperes

Dual Ratio-Tapped Secondary
Type CO3-110

25/50, 50/100, 200/400, 300/600,
400/800, 600/1200 amperes

Types CO3-150
CO3-200

25/50, 50/100, 100/200, 200/400,
300/600, 400/800, 600/1200 amperes

Dual Ratio Series

Parallel Primary

Types CO3-110
CO3-150 and
CO3-200

25x50, 50x100, 100x200,
200x400, 300x600, 400x800,
600x1200 amperes

Secondary Current

5 amperes (each secondary or tap)

Frequency

60 Hz

Style

Moulded, Outdoor Type

Accuracy Ratings and Rating Factors

Type	No. of Ratios	Cat. No.	Current Rating (Amps)	Accuracy Rating - Rating Factor
C03-110	Single	10301 to 10315	10 to 800	0.3B0.5 2.0
	"	10301-2 to 10315-2	"	0.3B2.0 1.5
	"	10316-2	1200	" 1.3
	Double	10317 to 10325	25/50 to 400/800	0.3B0.5 2.0 low ratio
	(Tapped Sec)	"	"	0.3B2.0 1.5 high ratio
	"	10326	600/1200	0.3B0.5 2.0 low ratio
	"	"	"	0.3B2.0 1.3 high ratio
	Double			
	(Ser-Par.Pri.)	10327 to 10335	25x50 to 400x800	0.3B0.5 2.0
	"	10366	600x1200	0.3B2.0 1.3
C03-150	Single	10401 to 10415	10 to 800	0.3B0.5 2.0
	"	10401-1 to 10415-1	"	0.3B2.0 1.5
	"	10416-1	1200	0.3B2.0 1.3
	Double			
	(Tap Sec.)	10417 to 10425	25/50 to 400/800	0.3B0.5 2.0 low ratio
				0.3B2.0 1.5 high ratio
		10426	600/1200	0.3B0.5 2.0 low ratio
			"	0.3B2.0 1.3 high ratio
	Double			
	(Ser-Par.Pri.)	10429 to 10435	25x50 to 400x800	0.3B0.5 2.0
	10436	600 x 1200	0.3B2.0 1.3	
C03-200	Single	10501 to 10515	10 to 800	0.3B2.0 1.5
		10542	1200	" 1.3
	Double			
	(Tap Sec.)	10517 to 10525	25/50 to 400/800	0.3B0.5 2.0 low ratio
	"			0.3B2.0 1.5 high ratio
	"	10552	600/1200	0.3B0.5 2.0 low ratio
	"	"		0.3B2.0 1.3 high ratio
	Double			
	(Ser-Par Pri)	10527 to 10535	25x50 to 400x800	0.3B2.0 1.5
		10566	600x1200	0.3B2.0 1.3

Description

These transformers are wound type with a single secondary winding wound on a core of grain-oriented steel.

The core and coils, after assembly and drying, are encapsulated in a cycloaliphatic epoxy resin for high mechanical, impact and dielectric strength. The core and its windings are separated from the epoxy by a special resilient layer to safeguard against damage from stresses which could occur due to the different coefficients of expansion of the core steel, copper and the epoxy.

The primary terminals on top of the case are identified by permanent molded letters and with a white dot to identify the H1 terminal.

The secondary terminals are located at the bottom of the transformer in a conduit box fitted with a weatherproof and sealable cover. They are identified by permanently molded letters and with a white polarity mark adjacent to the X1 terminal. Transformer may have a tapped single secondary winding with the terminals marked X1, X2 and X3.

A non-automatic, short-circuiting device, operated by a screwdriver is provided.

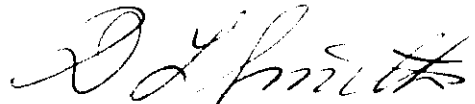
A solderless ground terminal is provided on all transformers within conduit box.

Approval granted to:

Electromagnetic Industries Inc.,
Clearwater, Florida, U.S.A.



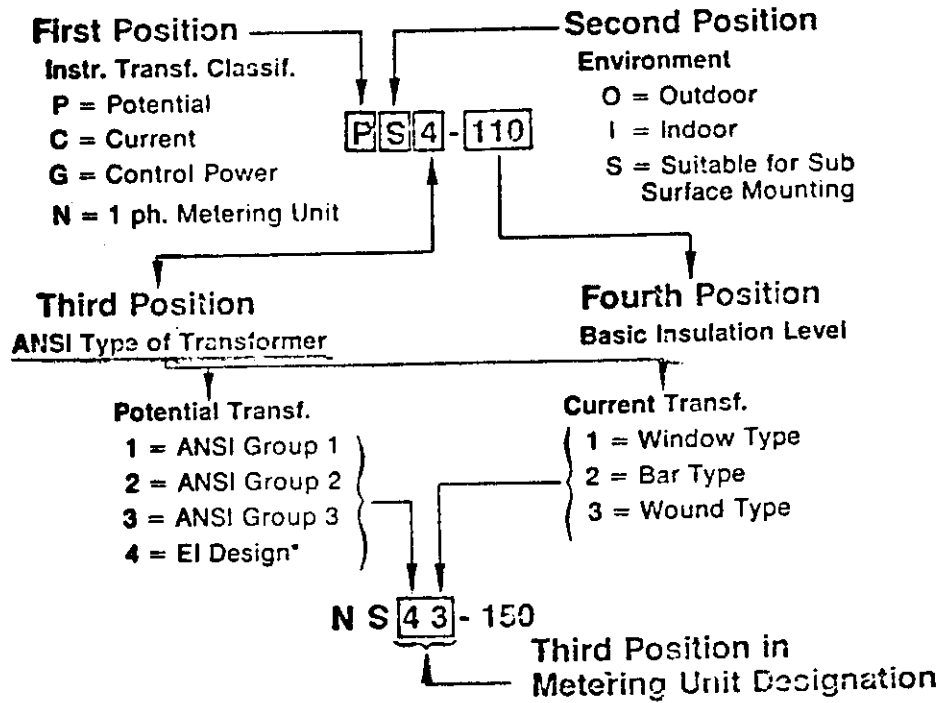
J.L. Armstrong,
Chief, Standards Laboratory,
Metrology and Laboratory Services



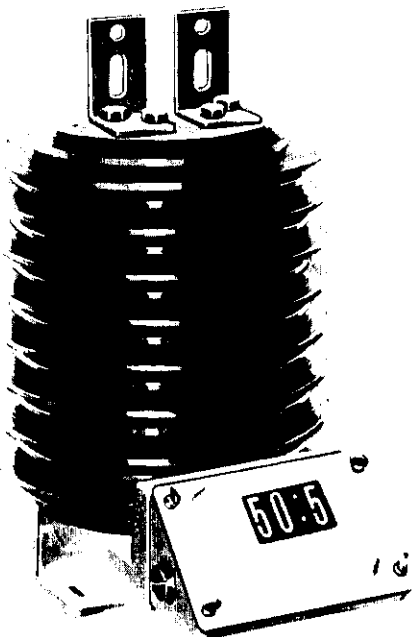
D.L. Smith,
Chief, Electricity and Gas Division,

Ref: GL 1145-57/E80-155

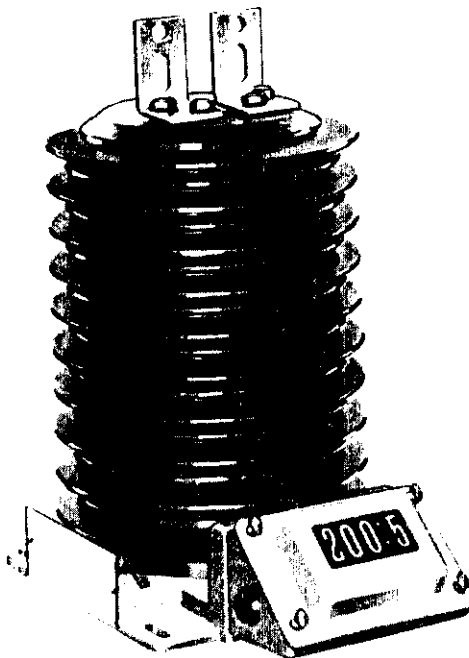
EXPLANATION OF THE TYPE DESIGNATIONS



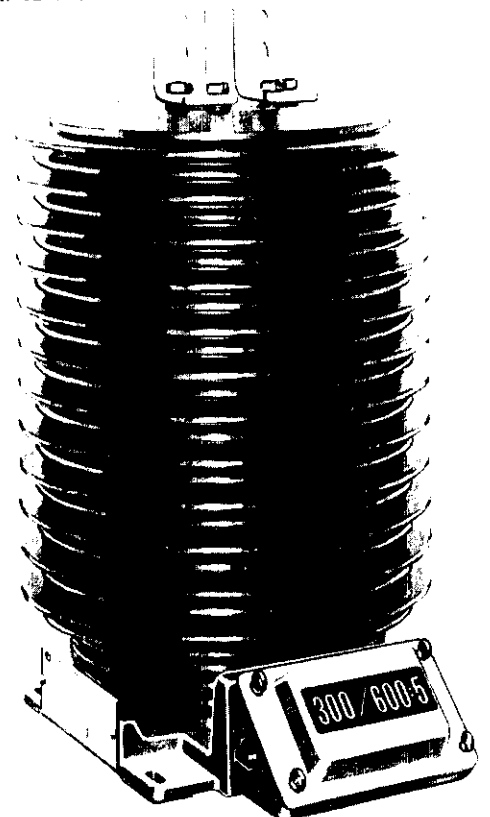
Prefix - A letter appearing before the above type designations identifies another "family" of similar products: e.g. BCO1-110 is similar to the series CO1-110.



CO3-110



CO3-150



CO3-200