



Department of consumer and corporate affairs / Ministère de la consommation et des corporations



STANDARDS BRANCH - DIRECTION DES NORMES

**NOTICE OF APPROVAL
AVIS D'APPROBATION**

T-98

OTTAWA March 8, 1976

**ELECTROMAGNETIC INDUSTRIES CURRENT TRANSFORMERS MODELS
IK, IF, ITS, ATS**

Model IK Approved in the following voltage classes
46, 69, 115, 138, 161, 196 and 230 Kv.

Approved for all standard single ratios from 10:5
and above, all tapped secondary ratios from 10/20:5 and
above and all series parallel ratios from 10x20:5 and above.

Accuracy class for all voltage classes and ratios
is 0.3B2.0 and rating factors are 1.5 up to and including
1600 Amps. and 1.0 above 1600 Amps.

Description

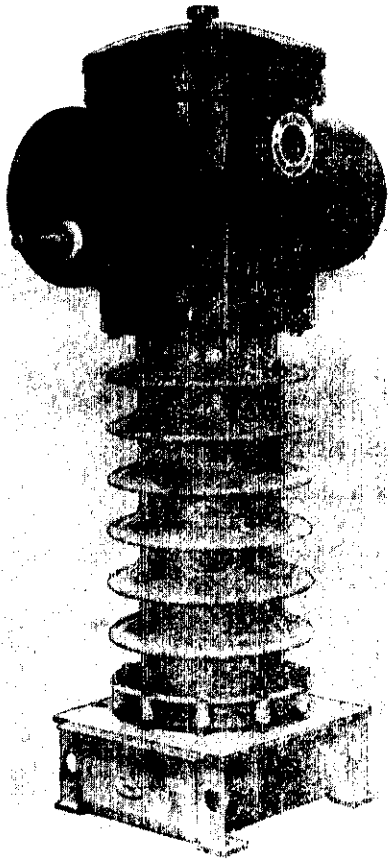
This is an oil-filled current transformer with
core and coils situated in the dome. There may be as many
as 3 magnetic systems (cores and secondary windings) in-
corporated. They may all be for metering or some may be
used for relaying purposes.

Primary terminal boards for series parallel
models are accessible through covers in the dome located
directly above the terminals. Secondary terminals are at
the base and are identified by a schematic diagram.

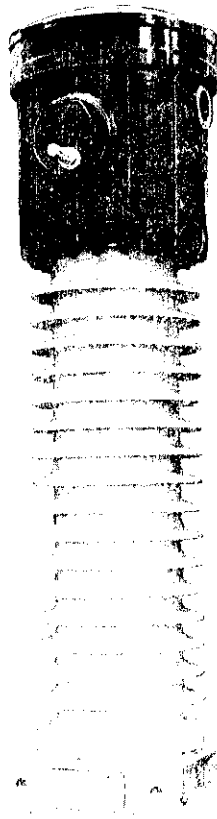
Model IF Available only in 115 Kv class (i.e. IF-115)

Approved in all standard ratios from 50:5 and
above for series parallel primaries or tapped secondaries
having standard ratios greater than 50:5.

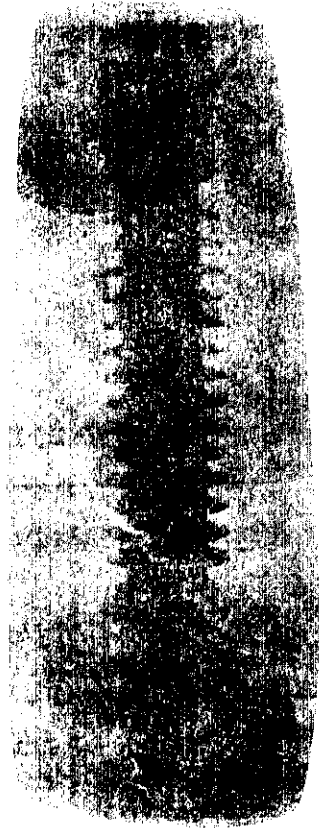
Accuracy for all ratios is 0.3B2.0 and rating
factor is 1.5.



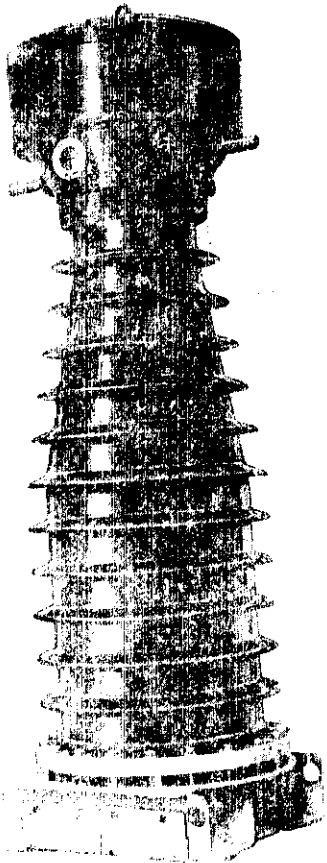
IK-69



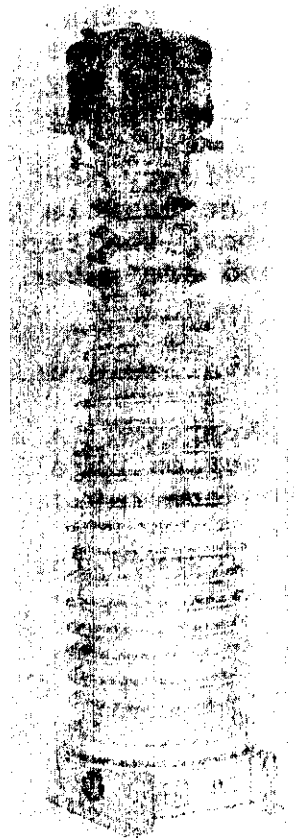
IK-196



IK-115



ITS-138



ITS-345

Description

This model is oil-filled as well but the active elements are in the tank. Again there may be as many as 3 magnetic systems included. Like the type IK primary series parallel connectors are accessible in the dome. Secondary terminals are at the base and are identified by a schematic diagram.

This is a special model making extensive use of aluminum in order to achieve light weight.

Models ITS & ATS Electrically identical and physically similar. Approved in the following voltage classes; 115, 138, 161, 196, 230 and 345. Approved for standard single ratios of 50:5 and above and for tapped secondaries and series parallel primaries having standard ratios above 50 to 5.

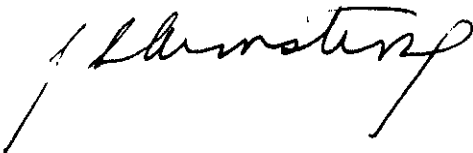
Accuracy for all ratios is 0.3B2.0 and rating factors are 1.5 up to and including 1600 Amps. and 1.0 above 1600 Amps.

Description

These types are oil-filled with the active elements in the tank. They may include as many as five complete magnetic systems. Series parallel connections and secondary terminals are as with other types covered by this approval.

Approval granted to:

Electromagnetic Industries Inc.,
P.O. Box 6440,
Clearwater, Florida, 33518.



J.L. Armstrong,
Chief, Standards Laboratory,
Metrology and Laboratory Services.



D.L. Smith,
Chief, Electricity & Gas Division,
Metrology and Laboratory Services.