



Department of consumer and corporate affairs / Ministère de la consommation et des corporations



**STANDARDS BRANCH - DIRECTION DES NORMES**

**NOTICE OF APPROVAL  
AVIS D'APPROBATION**

**T-93**

OTTAWA August 16, 1974

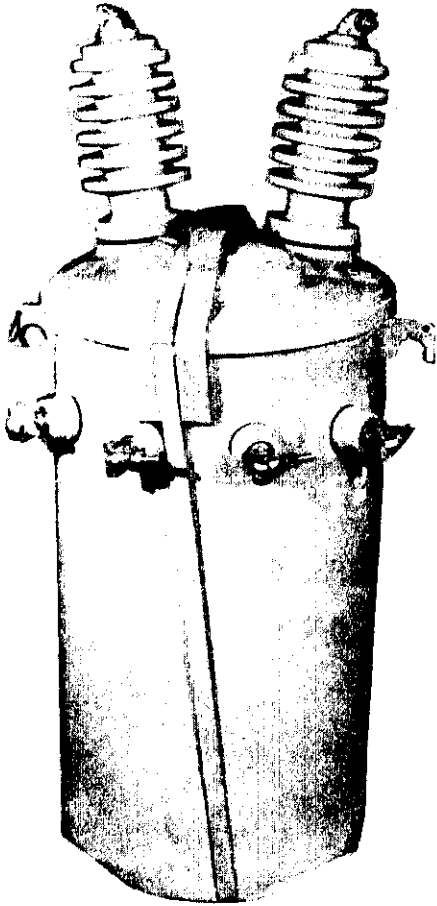
CANADIAN WESTINGHOUSE TYPES DVT-110, DVT-150  
AND DVT-200 SINGLE-PHASE VOLTAGE TRANSFORMERS

<u>Nominal Ratings</u>	<u>Ratio</u>	<u>Acc. a 60 Hz</u>
<u>Type</u>		
DVT-110	14400/120 - 120	.3Z - .3Z
	14400/120 - 72	" "
	12000/120 - 120	" "
	8400/120 - 70	" "
	7400/123 - 63	" "
DVT-150	24000/120 - 69	" "
	16800/120 - 70	" "
	14400/120 - 120	" "
	14400/120 - 72	" "
DVT-200	34500/115 - 66.4	" "
	27600/115 - 115	" "
	20125/115 - 67	" "
	16800/120 - 70	" "
<u>Nominal Voltage Class</u>		
DVT-110		15Kv
DVT-150, DVT-200		25Kv
<u>Basic Impulse Level</u>		
DVT-110		110Kv
DVT-150		150Kv
DVT-200		200Kv
<u>Frequency</u>		60Hz
<u>Style</u>		oil insulated, outdoor

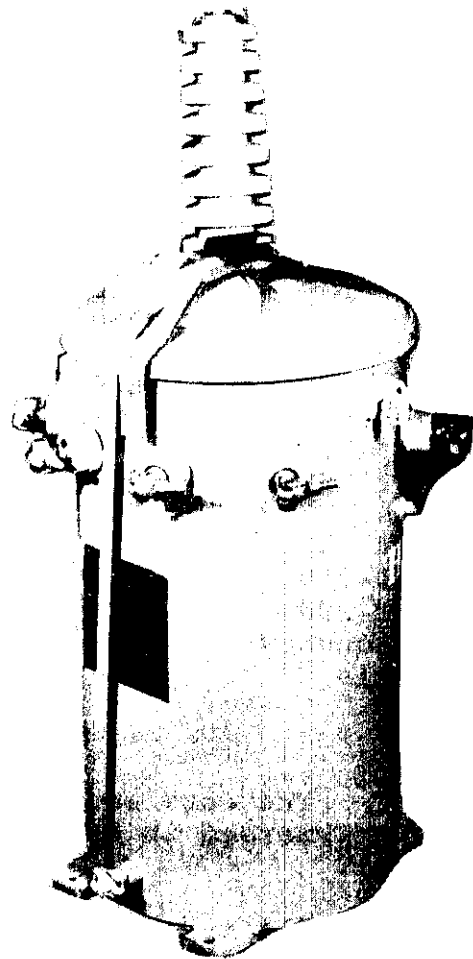
Description

The core and coils of the Type DVT voltage transformers are immersed in oil and contained in a vertical cylindrical tank.

All types may be in line-to-line (two cover-mounted bushings) or line-to-ground (one bushing) design.



TYPE KT-110



TYPE KT - 150

On all types, the four secondary terminals X1, X2 and Y1, Y2 are located on the side near the top of the tank.

The voltages, connections and ratios are as marked on the nameplate.

Approval granted to:

Westinghouse Canada Limited,  
London, Ontario.



J. L. Armstrong,  
Chief, Standards Laboratory,



D. L. Smith,  
Chief, Electricity & Gas Division,  
Metrology and Laboratory Services.

Ref: GL 1145-57/C3-581  
G 1145-57/C3-581