



Department of consumer and corporate affairs / Ministère de la consommation et des corporations



**STANDARDS BRANCH - DIRECTION DES NORMES**

**NOTICE OF APPROVAL  
AVIS D'APPROBATION**

T-90

OTTAWA October 29, 1973

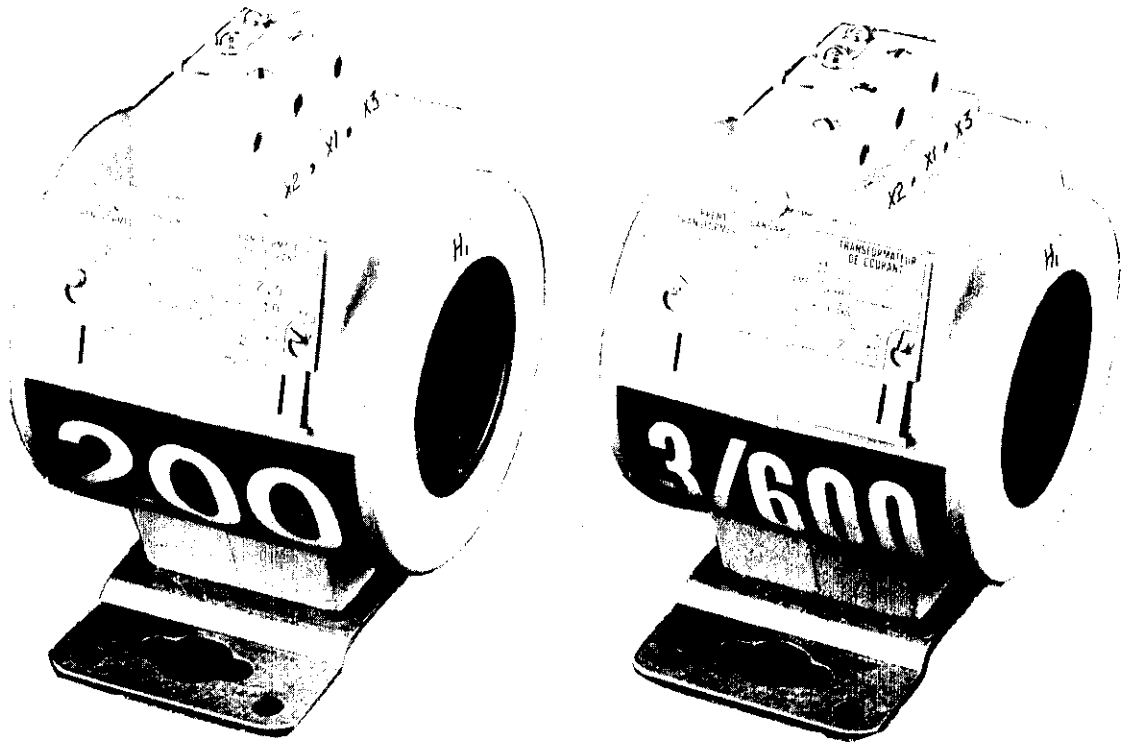
SANGAMO TYPES "MIT FORM A6" AND "MIT FORM B6"  
SINGLE AND DOUBLE RATIO CURRENT TRANSFORMERS

<b>Primary Currents</b>		
Form A6	Single Ratio	200, 400 and 600 amperes
	Double Ratio	600/300 400/200 amperes
Form B6	Single Ratio	400, 600 and 800 amperes
	Double Ratio	800/400 amperes
<b>Secondary Current</b>		5 amperes (all ratings)
<b>Accuracy Rating at 60 HZ</b>		
Form A6	200 amperes	0.3B0.1, B0.2*; 0.6B0.5
	300 amperes	0.3B0.1, B0.2, B0.5*; 0.6B0.9
	400 amperes	0.3B0.1, B0.2, B0.5, B0.9*; 0.6B1.0, B1.8
	600 amperes	0.3B0.1, B0.2, B0.5, B0.9*, B1.0, B1.8; 0.6B2.0
Form B6	400 amperes	0.3B0.1, B0.2, B0.5, B0.9*; 0.6B1.0
	600 amperes	0.3B0.1, B0.2, B0.5, B0.9*, B1.0, B1.8; 0.6B2.0
	800 amperes	0.3B0.1, B0.2, B0.5, B0.9*, B1.0, B1.8, B2.0
<b>Nominal Voltage Class</b>		600 volts
<b>Rating Factor</b>		2.0
<b>Frequency</b>		60Hz
<b>Wire</b>		2
<b>Style</b>		Window, moulded, indoor or outdoor

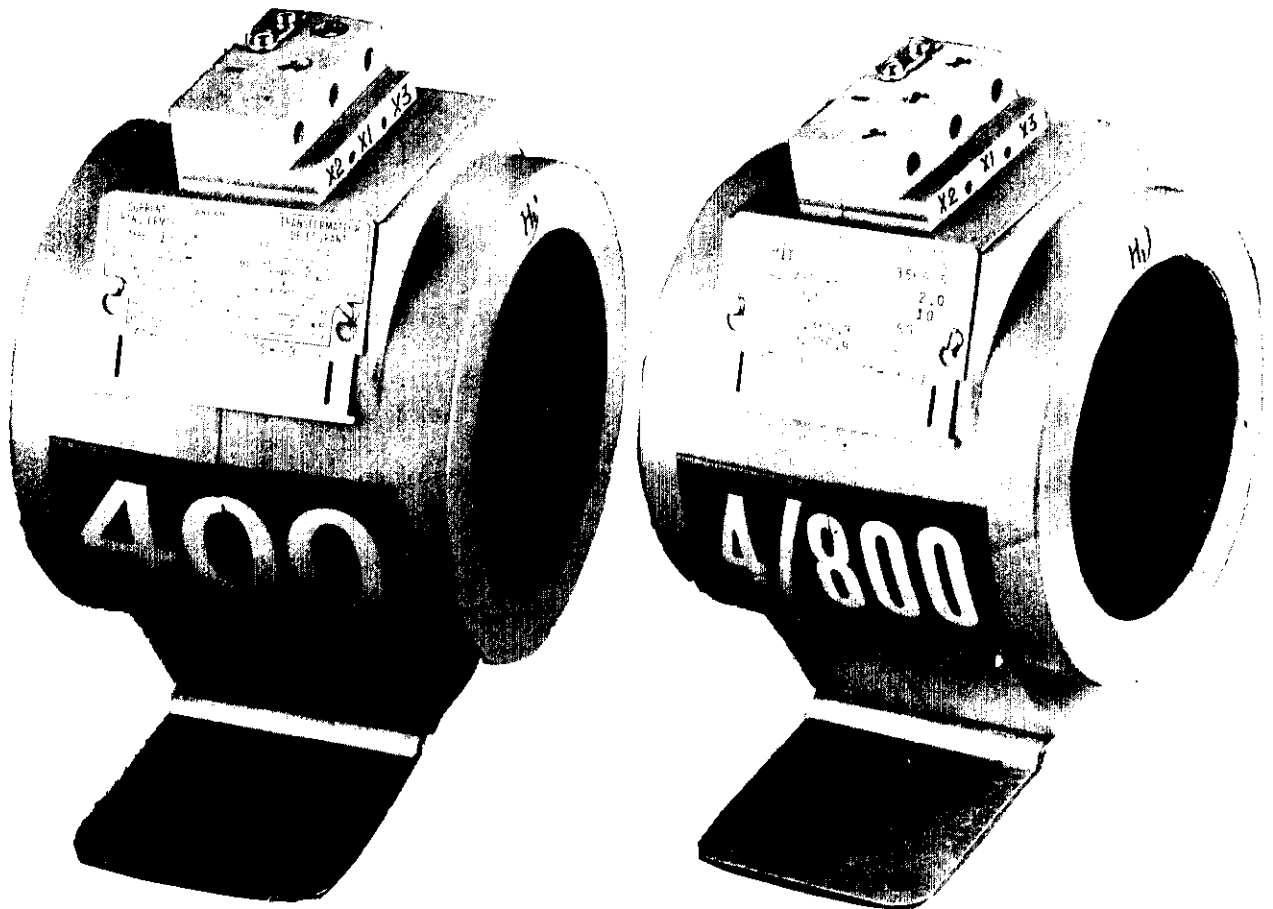
The accuracy associated with any primary current rating applies either for a single ratio or part of a double ratio unit.

\* Accuracy rating marked on the nameplate.

Type MIT Model A6



Type MIT Model B6



Description

These are epoxy moulded window-type transformers designed for indoor or outdoor service and have an insulation class of 600 volts. The window diameters are 2" and 3 1/8" for the Form A6 and Form B6 respectively.

The sealable clear plastic secondary terminal cover is keyed to prevent having the short-circuiting link closed when the transformer is in service.

The primary polarity mark "H1" is moulded in the case above the window.

All units have moulded secondary terminal marks X1, X2 and X3, with X1 situated in the middle. There is no X2 terminal on the single ratio units. The double ratio units use X1 and X2 for the low ratio and X1 and X3 for the high ratio.

The primary current rating is marked on the side of the transformer in bold figures.

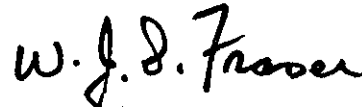
The metal base can be fastened to the transformer in line with the window or at right angles to it.

Approval granted to:

Sangamo Company Ltd.,  
215 Laird Drive,  
Toronto 17, Ontario.



J. L. Armstrong,  
Chief, Standards Laboratory,  
Metrology & Laboratory Services.



W.J.S. Fraser,  
Chief, Electricity & Gas Division  
Metrology & Laboratory Services

Ref: GL 1145-57/S2-47  
G 1145-57/S2-47