



CANADA

DEPARTMENT OF TRADE AND COMMERCE
STANDARDS BRANCH

S-EA.641

OTTAWA, December 14, 1964.

TYPE APPROVAL

CANADIAN WESTINGHOUSE TYPE "D3S" DUAL-RATED SINGLE-PHASE
WATTHOUR METERS

The apparatus specified and illustrated herein has been duly approved by the Standards Branch under the provisions of the Electricity Inspection Act, Chapter 94, R.S. 1952, and may be admitted to verification in Canada.

Apparatus Approved: Type "D3S" Dual-Rated Single-Phase Watthour Meter, manufactured and distributed in Canada by the Canadian Westinghouse Company Limited, Hamilton, Ontario.

| | |
|----------------------|---|
| Rating of Apparatus: | |
| Current Range | 2-200 amperes (2-100 amperes)* |
| Voltage | 230 and 240 |
| Wire | 3 |
| Frequency | 60 cycles |
| Watthour Constant | 7.2 |
| Register Ratio | 13-8/9 Clock type 4/5 dial # x 1 with test dial 138-8/9 Clock type 4 dial x 10 with test dial. |

* Marked on removable partial nameplate.

The 4/5 dial x 1 register is a 5-dial register with test dial having a white disc slipped on the shaft over the pointer of the highest reading dial. When it is desired to change the 4/5 dial register to a straight 5-dial, the disc is removed thus revealing the pointer.

Description: The type D3S dual-rated single-phase watthour meter is electrically identical to the 2-200 ampere rating receiving approval under circular S-EA.597 of Sept. 24, 1963. The purpose of the dual rating is to provide a more universal meter that can be used on either 100-ampere or 200-ampere services, and this is achieved by the use of a partial nameplate marked 2-100 amps and a 4/5 dial register with test dial.

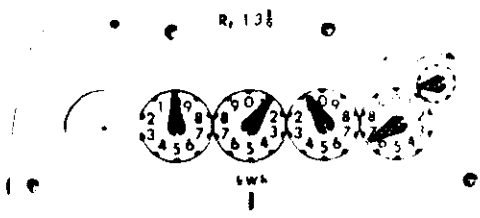
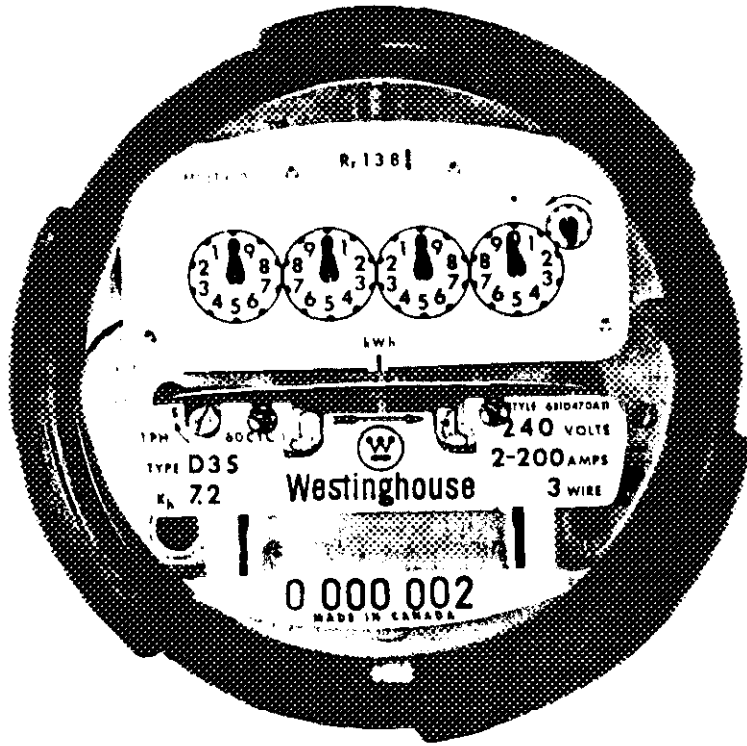
Meters without the partial nameplate and hence of 200 ampere rating must be presented with either a 5-dial x 1 or a 4-dial x 10 register.

This 4/5 dial register with test dial, Rr of 13-8/9 and multiplier of 1 and the 4 dial x 10 register with test dial, Rr of 138-8/9 are approved for use on all "D" type meters of 200 ampere capacity previously approved under circulars S-EA.424, S-EA.575,



CANADIAN WESTINGHOUSE TYPE "D35" DUAL-RATED SINGLE-PHASE
WATT-HOUR METERS

S-EA.641



Description (cont'd) S-EA.584 and S-EA.597 as field replacements when required, with the 4/5 dial register being presented as a 5-dial.

This circular supersedes circular S-EA.631 of June 25, 1964 to include the 4-dial x 10 register.

This meter is available with an English-French name-plate.

G. E. Anderson
G. E. Anderson,
Chief Engineer,
Standards Branch.

R. W. Maclean
(for) R. W. Maclean,
Director,
Standards Branch.

Ref: A382L

