



TRADE AND COMMERCE
CANADA

STANDARDS DIVISION

OTTAWA July 14, 1964.

TYPE APPROVAL

LANDIS & GYR TYPE "RG/Pmw" TELE-PRINTO-MAXIGRAPH
IMPULSE RECORDER AND PRINTER

The apparatus specified and illustrated herein has been duly approved by the Standards Branch under the provisions of the Electricity Inspection Act, Chapter 94, R.S. 1952, and may be admitted to verification in Canada.

Apparatus Approved: Type "RG/Pmw" Tele-Printo-Maxigraph Impulse Recorder and Printer, manufactured by Landis & Gyr, Zug, Switzerland, and distributed in Canada by Landis & Gyr, Inc., 725 Decarie Blvd., Montreal 9, P.Q.

Rating of Apparatus:

Input Maximum of 90 pulses per minute
Chart Speed 5 mm per printing
Time Interval 10, 15, 30 and 60 minutes
o Power Supply 115 volts, 60 cycles

This is the integrating period and includes the 7-second re-setting period.

o A synchronous motor supplies the power to operate the printing and recording mechanism, to drive the chart and wind the reserve clockwork movement.

Description: The Tele-Printo-Maxigraph is a recording instrument intended to provide a printed record of maximum demand values at the end of each integrating period. These values are received in pulse form originating from contacts installed on primary meters, and serve only to trip a receiving relay.

At the end of each integrating period the instrument draws a line that is proportional to the pulse count simultaneously printing opposite the line the actual number of impulses received.

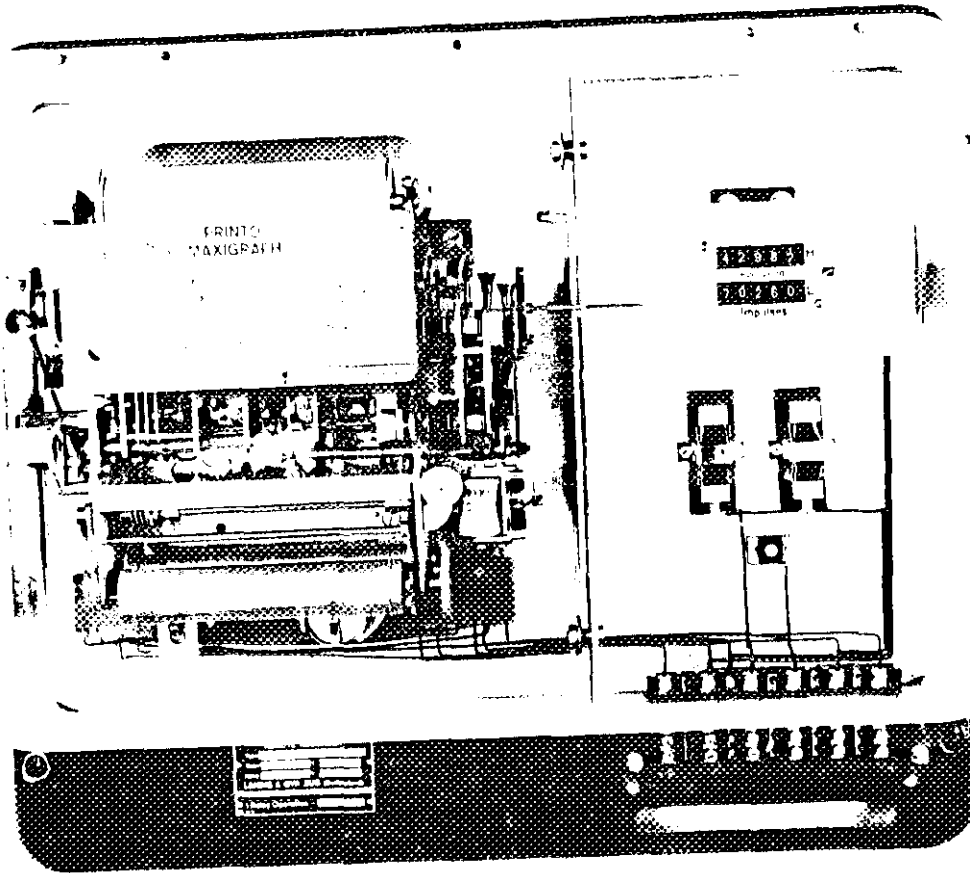
A maximum demand dial indicates the maximum number of impulses received in any interval since the last re-setting, and a 5-figure cyclometer register on some units integrates the pulse count.

Pulses that are received during the printing period are stored.

...../2

S-EA, 632

LANDIS & GYR TYPE "RC/Print" TELE-PRINTO-MAXIGRAPH
IMPULSE RECORDER AND PRINTER





- 2 -

On some units an hour dial is available which completes one revolution in 24 hours, a black semi-circle denoting the night hours. Adjustable riders on the hour dial cause an identifying symbol to be printed on the chart to distinguish between certain groups of recorded values occurring at different times of day, or if a double tariff register is installed, to transfer the recording of the pulses from one to the other according to a pre-set time schedule.

The Tele-Printo-Maxigraph is approved for use for recording the pulses generated by approved S.P.S.T. and S.P.D.T. contact devices.

The following variations are covered by this approval:-

Ahead of the Oblique Stroke -

- "RG1" - basic impulse receiver with pivoting armature relay to receive impulses from S.P.S.T. transmitting contacts.
- 2RG1 - basic impulse receiver with double interlocked pivoting armature relays to receive impulses from S.P.D.T. transmitting contacts.
- "e" - denotes a single-rate register (integrating)
- "d" - denotes a two-rate register (integrating)

Following the Oblique Stroke -

- "P" - denotes printing mechanism
- "mw" - denotes a maximum device controlled by a built-in motor-wound clockwork movement
- "myw" - denotes a maximum device controlled by a synchronous motor with additional clockwork carry-over movement electrically wound by induction motor.
- "m" - (after the mw or myw) denotes a normally closed contact for operating separate demand indicators.
- "u" - denotes a changeover contact
- "d" - denotes a double-tariff contact
- "q2" - denotes a marking relay
- "q7" - denotes a tripping relay operated by S.P.D.T. transmitting contacts.
- "f1" - denotes a flush-mounting case
- "f2" - denotes a surface-mounting case

...../3

This circular supersedes S-EA.428 of December 4, 1959, to include units having q7 contacts.

These instruments are approved for use unsealed.

W. J. Power

(for) E. F. Power,
Chief, Electricity & Gas Division,
Standards Branch.

R. W. MacLean
R. W. MacLean,
Director,
Standards Branch.

Reference: A833A

