



S-EA.614

DEPARTMENT OF TRADE AND COMMERCE  
STANDARDS BRANCH

OTTAWA, February 27, 1964.

TYPE APPROVAL

LANDIS & GYR TYPE "MFB" 3-ELEMENT POLYPHASE WATTHOUR METER

The apparatus specified and illustrated herein has been duly approved by the Standards Branch under the provisions of the Electricity Inspection Act, Chapter 94, R.S. 1952, and may be admitted to verification in Canada.

Apparatus Approved: Type "MFB" 3-Element Polyphase Watthour Meter, manufactured by Landis & Gyr, Zug, Switzerland, and distributed in Canada by Landis & Gyr, Inc., 725 Decarie Blvd., Montreal 9, P. Q.

Rating of Apparatus:

Current Range	0.12-10 amperes
Voltage	3 x 115 volts
Phase	3
Wire	4
Elements	3
Frequency	60 cycles

Description:

This meter is similar in design to the type "FFB" 2-element meter receiving approval under SD-EA.366 of July 7, 1958, SD-EA.366 (amended) February 24, 1964, S-EA.420 of October 22, 1959 and the watthour section of the type "FFB/VA/FFB<sub>g</sub>" "Trivector" under S-EA.551 of June 7, 1962, except that it has 3-elements. Like the "FFB" it is intended for use with current and voltage transformers, but in a 3-phase 4-wire circuit.

This meter may be presented for verification with a clock or cyclometer register having four or five dials.

The following attachments are approved for use with the type "MFB" watthour meter:-

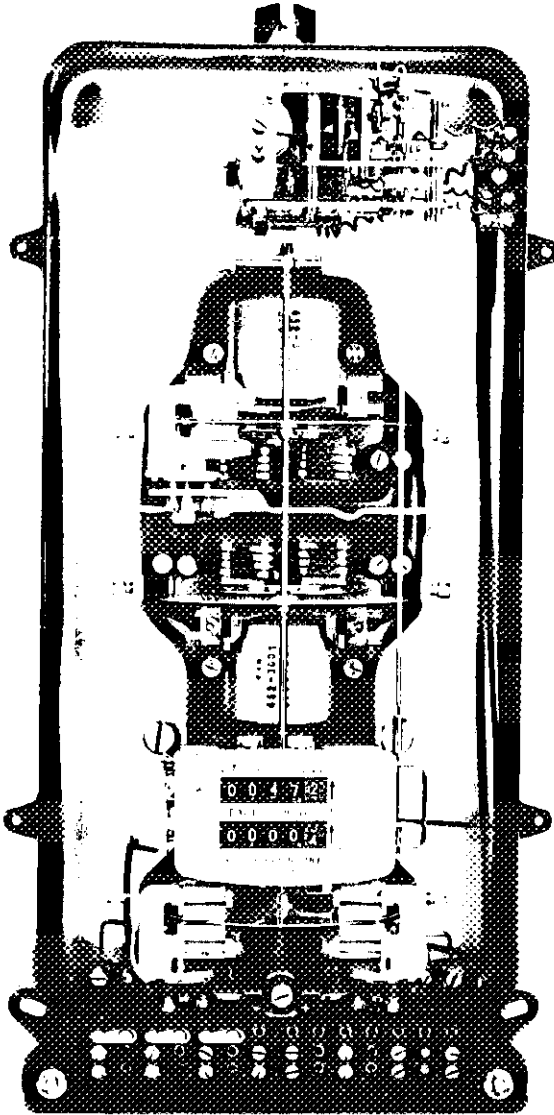
"r4"	impulsing contact device	S-EA.417
"h"	reverse running stop	S-EA.420
"f1" "f2"	switchboard or flush mounting	S-EA.420 and S-EA.428
"d"	cyclometer double tariff register	S-EA.425
"m" "mw" "my" "mwe" "mye"	maximum demand register	SD-EA.366 S-EA.453
"m1" "m3"	cumulative maximum demand register	S-EA.453
"m5"	cumulative maximum demand register	S-EA.468
"ay"	excess consumption attachment, single rate	later circular
"s2y"	excess consumption attachment, dual rate	later circular

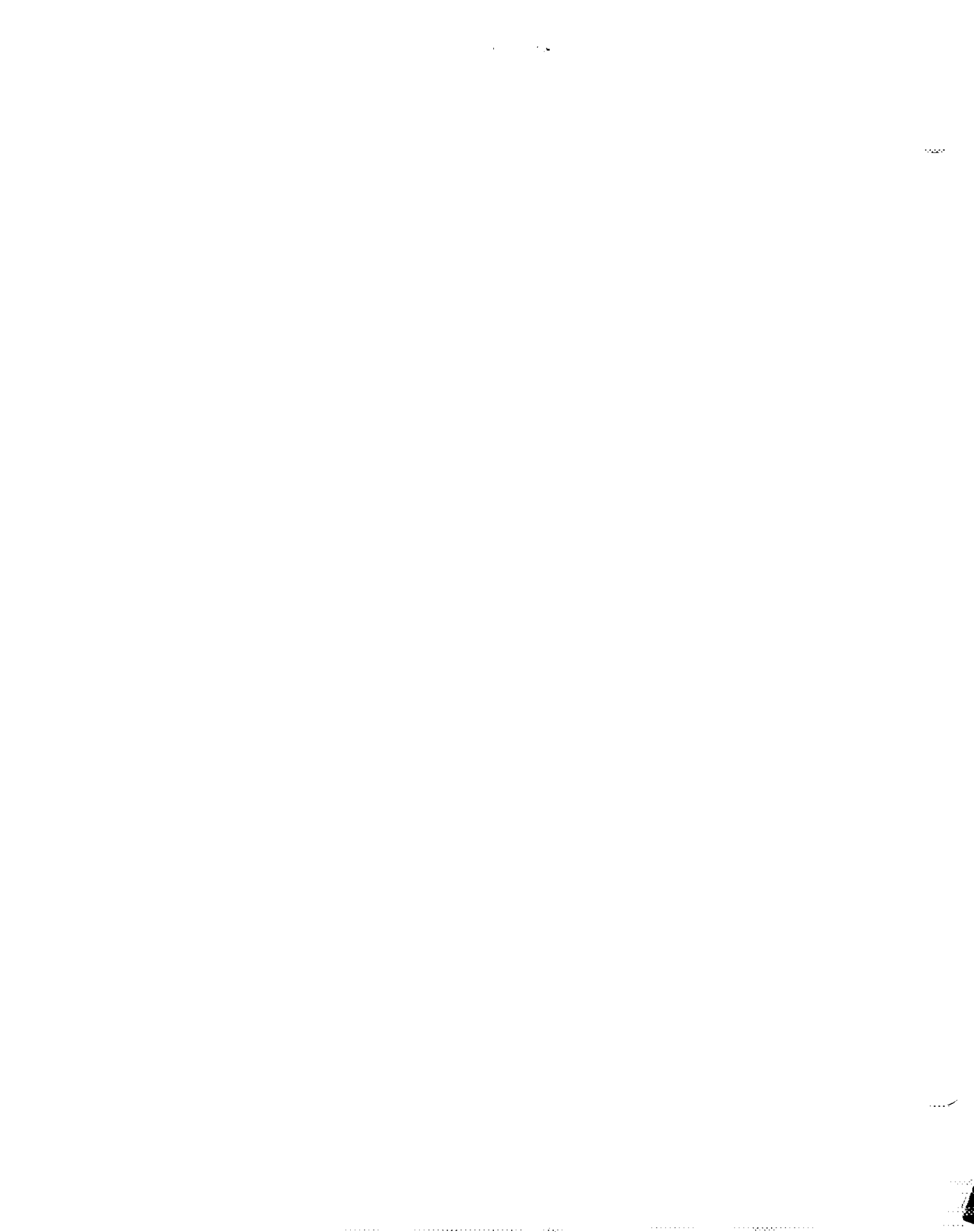
...../2



LANDIS & GYR TYPE "MF8" 3-ELEMENT POLYPHASE WATTHOUR METER

S-EA.614





The use of any of these attachments is indicated in the type designation e.g., "MF8hmyr4f1".

- \* The illustration shows the "s2y" "Excess Consumption Attachment" mounted on a Type "MF8" watt-hour meter.

*W. J. S. Fraser*

(for) E. F. Power,  
Chief, Electricity and Gas Division,  
Standards Branch.

*R. W. Maclean*  
R. W. Maclean,  
Director,  
Standards Branch.

Ref: A24

