



TRADE AND COMMERCE  
CANADA

STANDARDS BRANCH

OTTAWA June 15, 1962.

TYPE APPROVAL

LANDIS & GYR TYPE "---/Pmw" 'PRINTO-MAXIGRAPH'  
AVERAGE DEMAND RECORDER AND PRINTER

The apparatus specified and illustrated herein has been duly approved by the Standards Branch under the provisions of the Electricity Inspection Act, Chap.94, R.S. 1952, and may be admitted to verification in Canada.

Apparatus Approved: Type "---/Pmw" 'Printo-Maxigraph' Average Demand Recorder and Printer, manufactured by Landis & Gyr, Zug, Switzerland, and distributed in Canada by Landis & Gyr, Inc., 725 Decarie Blvd., Montreal 9, P.Q.

Rating of Apparatus:

- \*Input ..... up to 90 pulses per minute
- Chart Speed ..... 5 mm per printing
- Test Period ..... 10, 15, 20, 30 and 60 minutes
- Supply ..... 115 volts, 60 cycles
- For use with ..... Any suitable approved type of watt-hour meter.

\*Produced by the escapement mechanism driven directly by the watt-hour meter disc shaft.

Description: The 'Printo-Maxigraph' is very similar to the 'Tele-Printo-Maxigraph' receiving approval under Circular S-EA.428 of December 4, 1959 except that the receiving relay "RG" is omitted. In its place, an approved type of watt-hour meter is installed in the same case and coupled to the Printo-Maxigraph by means of a gear train and an escapement. The case is provided with a sealable door for installing and removing the chart without permitting access to the meter compartment.

The Printo-Maxigraph can be supplied from a separate source of power and it should be noted that in the event of an interruption in the supply, the reading immediately following the interruption is to be disregarded for billing purposes.

The Maximum Demand is indicated in three forms:-

1. A numerical exact record of the number of pulses recorded.
2. A horizontal line whose length is proportional to the average demand during each test period.
3. An indicator showing the greatest maximum average demand since the last re-setting.

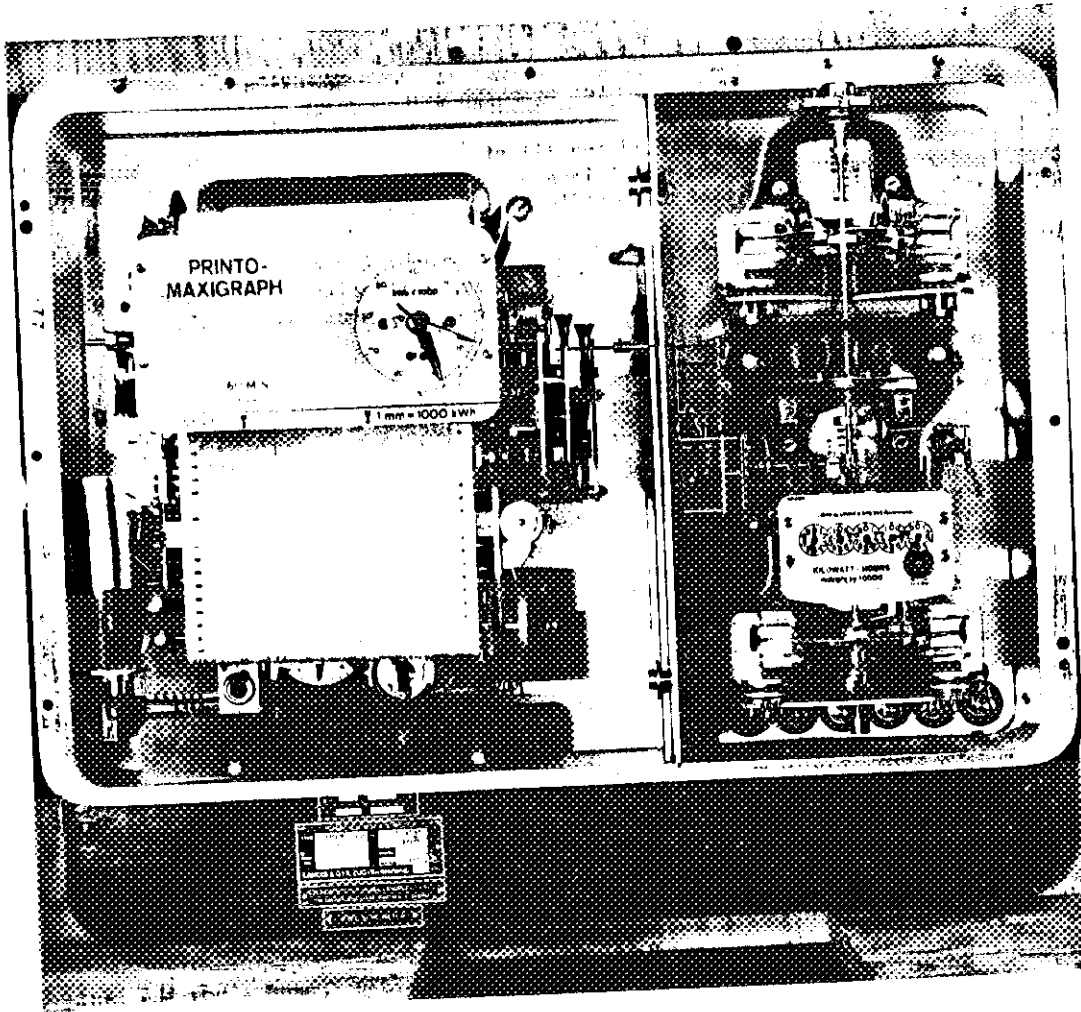
The numerical printed record may be used for billing, but the other two must not be so used.

...../2  
(The



S-BA.553

LANDIS & GYR TYPE "----/PmW" 'PRINTO-MAXIGRAPH'





The basic 'Printo-Maxigraph' is designated "---/Pmw". Certain auxiliary devices manufactured by Landis & Gyr and listed on Circular S-EA.428 are approved for use with this instrument. These devices follow the "Pmw" designation. The combination of an approved watt-hour meter in the same case with the Printo-Maxigraph is designated, for example, as "MFP7lh/Pmw60yf2", and the approval of certain attachments for use on the watt-hour meter is still valid when the meter forms part of the combination.

*E. F. Power*

E. F. Power,  
Chief, Electricity and Gas Division,  
Standards Branch.

*R. W. MacLean*

R. W. MacLean,  
Director,  
Standards Branch.

Ref: A-941

