



TRADE AND COMMERCE
CANADA

S-EA.416

Ref: A-733

STANDARDS BRANCH

OTTAWA, October 14, 1959.

TYPE APPROVALGENERAL ELECTRIC TYPES "PD55F" and "PD57F" PRINTING DEMAND METERS

The apparatus specified and illustrated herein has been duly approved by the Standards Branch under the provisions of the Electricity Inspection Act, Chapter 94, R.S. 1952, and may be admitted to verification in Canada.

Apparatus Approved: Types "PD55F" and "PD57F" Printing Demand Meters manufactured by the General Electric Company Limited, U.S.A., and distributed in Canada by the Canadian General Electric Company Limited, Quebec, P.Q.

Rating of Apparatus: 60 cycles, 120 volts; 15, 30 or 60 minute time interval. The maximum incoming pulse rate which the meter can handle is 1.11 impulses per second. Total number of impulses that can be recorded per demand interval is 999.

Description: The Types "PD55F" and "PD57F" printing demand meters are intended for use with a watt-hour meter or other impulse generating device to give a printed record of demand. They are improved versions of Types "PD55" and "PD57" originally approved under Circular S.D.E.A. 347 of March 20, 1958. The demand meter is capable of receiving 999 impulses per demand interval and will store and record those received during the reset period. The "PD57F" has an internal timing motor with intervals of 15, 30 or 60 minutes. Changing from one interval to another is accomplished by changing two gear assemblies. The tape must be changed to match the time interval chosen. The timing interval of the "PD55F" is determined by an external contact making clock or a Type "PD57F". Isolating contacts in the "PD57F" enable it to actuate two Type "PD55F" simultaneously without relays and up to twenty Type "PD55F" with R-6 relays.

Both types are available only in switchboard type case with provision for either back or bottom connection and flush or semi-flush mounting. The demand is printed on a pressure-sensitive tape at the expiration of each timing interval. A small dial on the left of the meter face records by means of driver (black) and driven (red) hands the approximate demand and maximum demand. The indication of this dial must not be used for billing purposes. On the right side of the meter face of the Type "PD57F" a small dial and pointer indicate the proportion of the demand interval used at any given time. This dial is blank in the "PD55F". A totalizing counter at the bottom of the meter face records the total number of impulses accumulated by the device.

These meters may be used unsealed.

R. W. MacLean
R. W. MacLean,
Director,
Standards Branch.

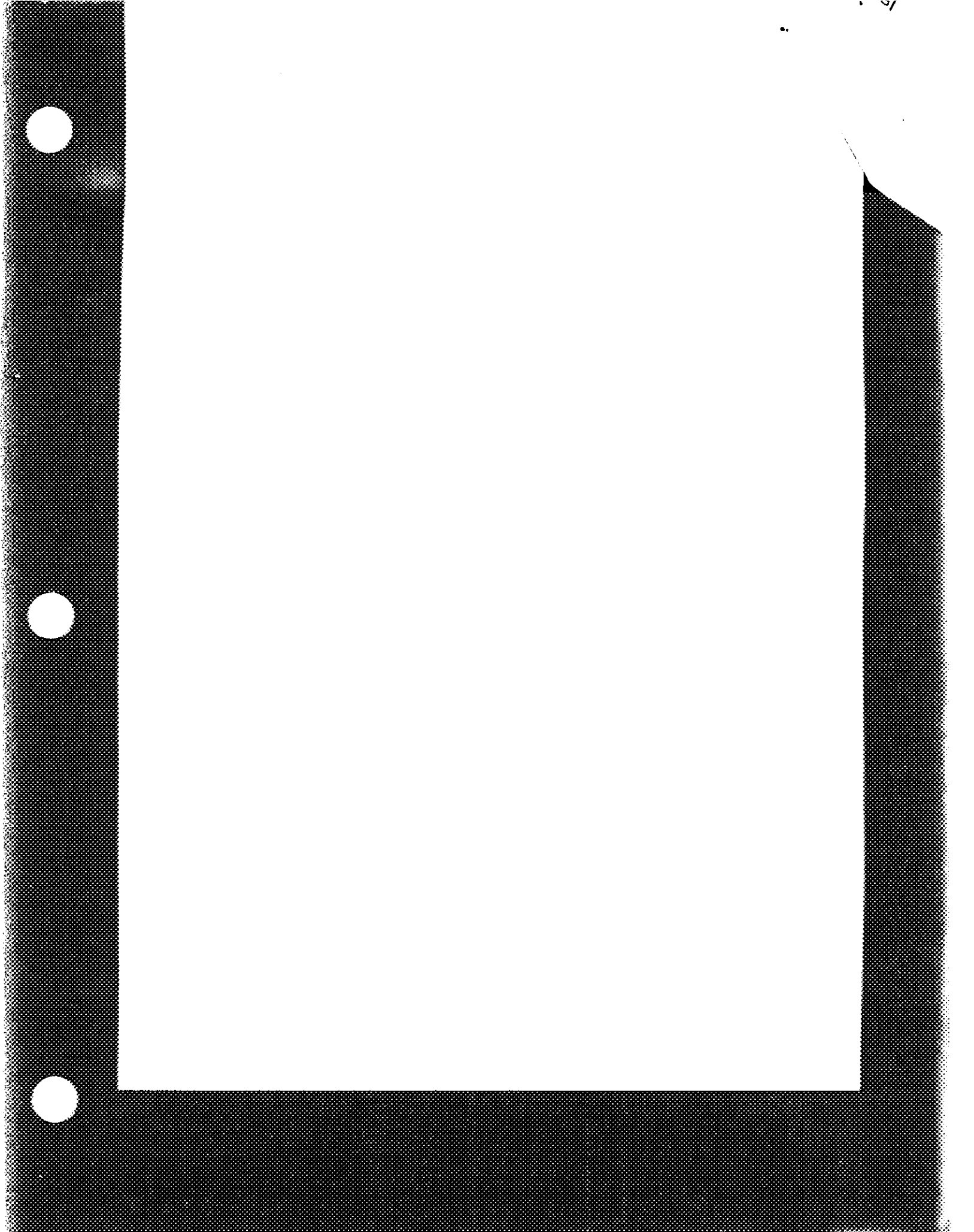
E. F. Power
E. F. Power,
Assistant Director (E&O),
Standards Branch.

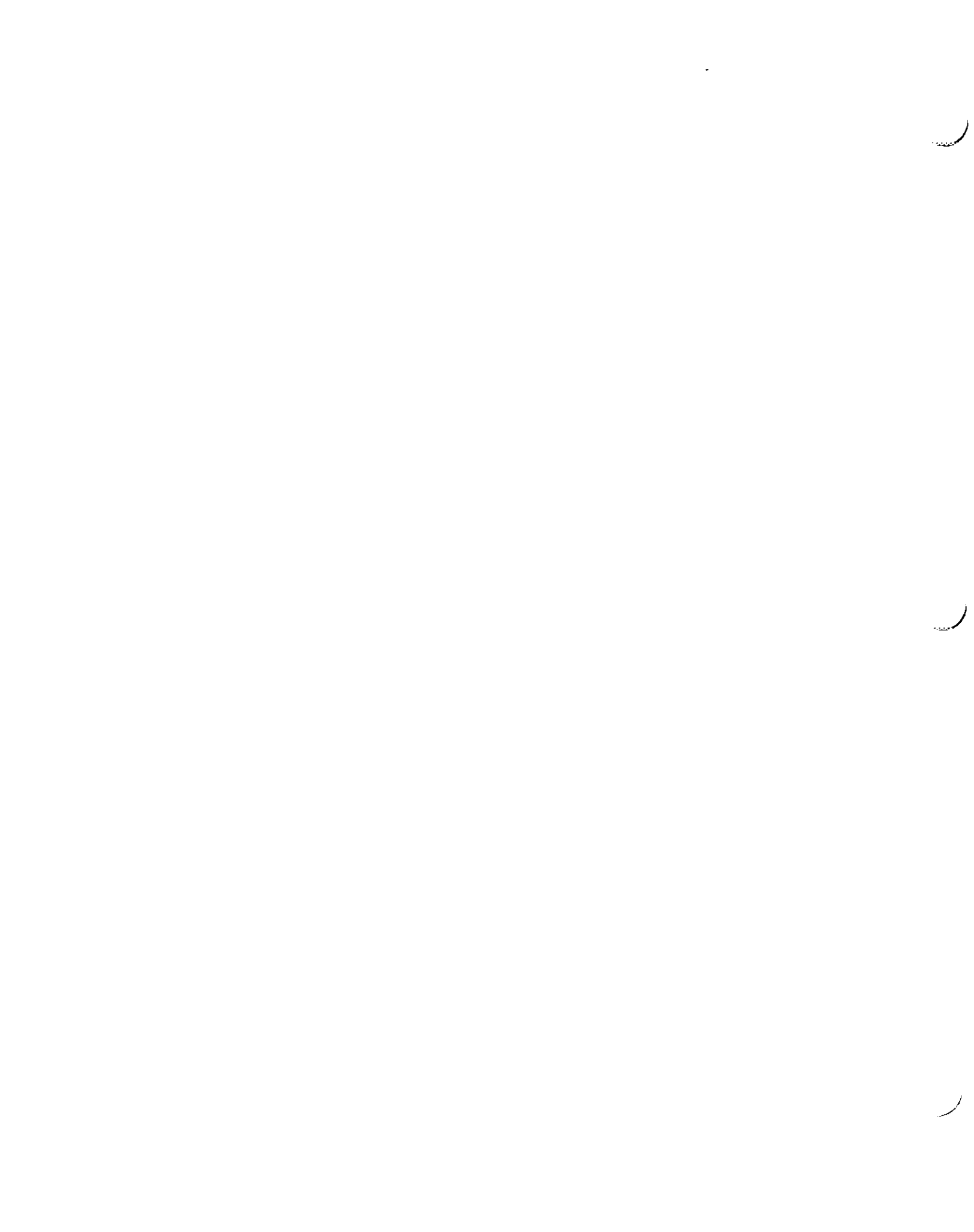
1

2

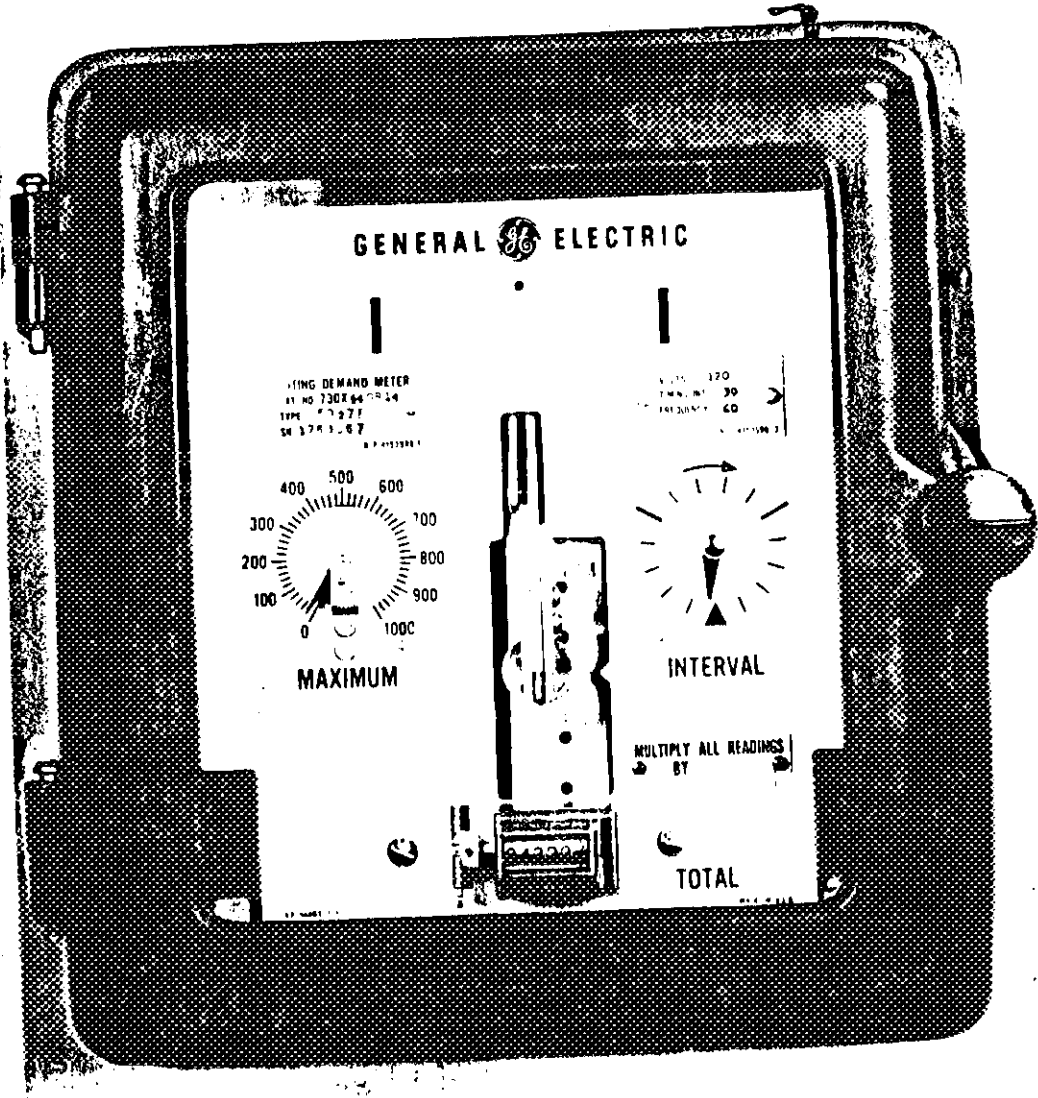
3

4





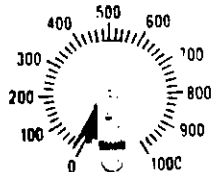
GENERAL ELECTRIC TYPE "PD57" PRINTING DEMAND METER



GENERAL  ELECTRIC

PRINTING DEMAND METER
ST NO 730784
TYPE PD57
SN 178367

VOLTS 120
TURNS 30
FREQUENCY 60



MAXIMUM



INTERVAL

MULTIPLY ALL READINGS BY

TOTAL

