



TRADE AND COMMERCE
CANADA

SD-EA.317

STANDARDS DIVISION

OTTAWA.....October 10, 1957.....

TYPE APPROVAL

DUNCAN TYPES "TH-2SE" AND "TH-2½SE" POLYPHASE
COMBINATION WATTHOUR AND THERMAL DEMAND METERS - HIGH CAPACITY


The apparatus specified and illustrated herein has been duly approved by the Standards Division under the provisions of the Electricity Inspection Act, Chapter 94, R.S. 1952, and may be admitted to verification in Canada.

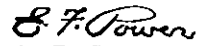
Apparatus Approved: Types "TH-2SE" and "TH-2½SE" Polyphase Demand-Energy Meters, manufactured by Duncan Electric Manufacturing Company, Lafayette, Indiana, and distributed in Canada by R. L. Brews and Son Ltd., 10810 - 119th Street, Edmonton, Alberta.

| Rating of Apparatus: | "TH-2SE" | "TH-2½SE" |
|-------------------------------------|------------------|------------------|
| Current Range | 2.5-200 amperes* | 2.5-200 amperes* |
| Voltage | 120 and 240 | 120 |
| Wire | 3 | 4 |
| Phase | 3 | 3 |
| Elements | 2 | 2½ |
| Disc Constant | 12.0 and 24.0 | 18.0 |
| Demand Scale (direct reading) | 42 KW and 84 KW | 72 KW |
| Frequency | 60 cycles | 60 cycles |

* to be used with high capacity socket.

Description: The types "TH-2SE" and "TH-2½SE" demand-energy meters consist of Duncan type "MH" polyphase watthour elements and new high-torque thermal elements combined in the socket-base mounting. The "E" in the type designation indicates an extended load range for these meters. Other types without the extended load range do not have the "E" included in the type designation. Such other types are not covered by this Approval. The Approval includes clock registers with five dials and a multiplier of 1 only. Potential currents for the thermal elements are supplied from an additional winding on the potential coils rather than from a separate transformer. This is a recent modification, and it should be noted that previous production models which have a separate potential transformer and which bear the same type number are not covered by this Approval.


R. W. MacLean,
Director,
Standards Division.


E. F. Power,
Assistant Director (E&G),
Standards Division.

Ref: A-640



DUNCAN ELECTRIC CO. TYPE "TH-2½ SE" COMBINATION
WATTHOUR AND THERMAL DEMAND METER

DUNCAN ELECTRIC CO. INC.
LAFAYETTE IND. U.S.A.

ALL
ADJ.

2.5-200 AMPS.
NORMAL CURRENT RANGE

TYPE

TH-2½ SE

120 VOLT
60 CYCLE

2½ ELE.

4 WIRE

K_h 18

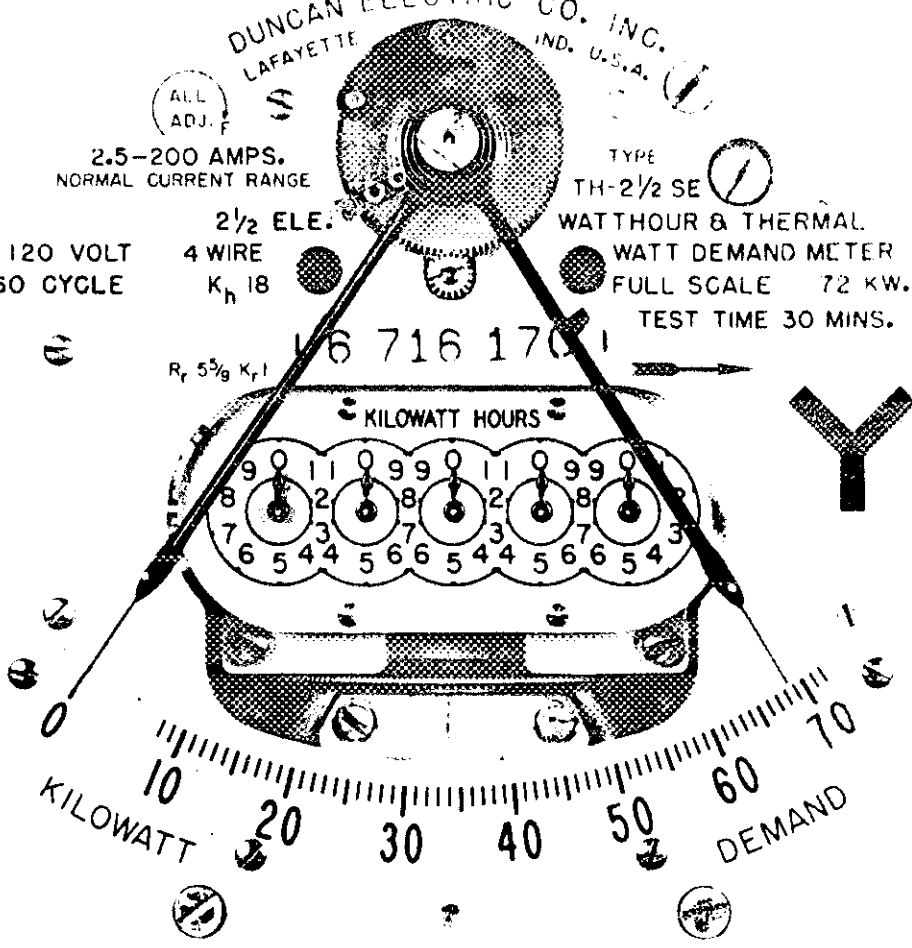
WATTHOUR & THERMAL
WATT DEMAND METER

FULL SCALE 72 KW.

TEST TIME 30 MINS.

46 716 1701

R_r 5½ K_r 1



KILOWATT HOURS

KILOWATT

DEMAND

