



Consumer and
Corporate Affairs

Consommation et
corporations

Standards

Normes

**NOTICE OF APPROVAL
AVIS D'APPROBATION**

E-144-3

Ottawa, February 28, 1979

SCIENTIFIC COLUMBUS DIGILOGIC SOLID STATE
WATT/WATT HOUR TRANSDUCER AND SCIENTIFIC
COLUMBUS MODEL "6153C" DUAL WATT HOUR REGISTER

This notice constitutes an amendment to Notices of Approval E-144, E-144-1 and E-144-2 in order to incorporate the following changes:

1. The nameplate data; transducers and dual watt hour registers, will display the "Kp" constant in "Wh/PULSE" instead of "PULSES/Wh".
2. The new nameplate for the Dual Watt Hour Register incorporates a suffix "C" in the model designation, which indicates the Canadian version. Thus, original model designation "6153" becomes "6153C".
3. The last paragraph of Approval Notice E-144 is exemplified in the drawings.

The smaller inner lucite plate prevents access to the calibration adjustments and is normally sealed by the inspector when lock wiring and sealing the cover screws.

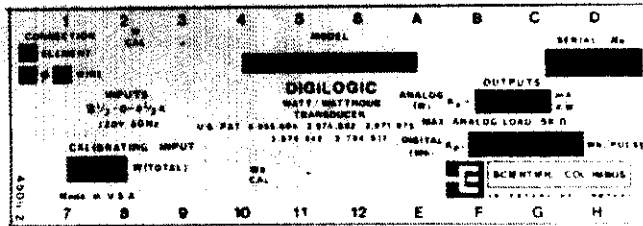
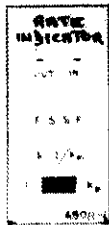
The larger plate completely surrounds, but is separate from the inner plate and can be sealed by the utility to prevent unauthorized access to the terminals.

Approval granted to:

Scientific Columbus,
Division of Esterline Corp.,
Columbus, Ohio, U.S.A.
Canadian Agent: R.G. Shelley Ltd.
Don Mills, Ontario.

D.L. Smith,
Chief, Electricity & Gas Division
Legal Metrology Branch.

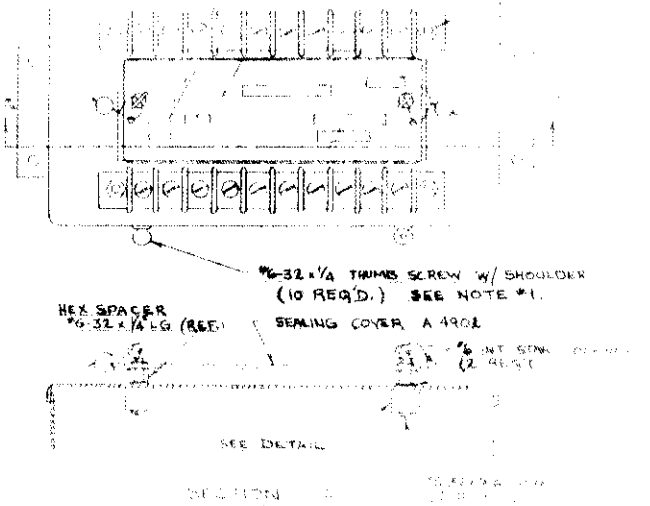
Ref: G6565-S771



LEADS WIRE TYP.
(SUPPLIED BY CUSTOMER)

CALIBRATION SEALING

HEX SPACER #6-32x1/4 (10 REQ'D.)



TERMINAL SEALING

