



Consumer and  
Corporate Affairs

Consommation et  
corporations

Standards

Normes

**NOTICE OF APPROVAL  
AVIS D'APPROBATION**

E- 132-1

May 2, 1979

Ottawa, \_\_\_\_\_

WESTINGHOUSE TYPE "WR-31" DEMAND RECORDER  
AND TYPE "CDI-22AR" PULSE INITIATOR COMBINATION

This constitutes an extension to Notice of Approval E-132 dated May 16, 1975 and covers the modification of the recorder for interconnection with the Type CDI-22AR Pulse Initiator with which it will be used henceforth.

The pulse initiator is essentially the same as the Type CDI-22A in Notice of Approval E-148 dated March 8, 1977, except that the output relay has been omitted. Similarly the WR-31 recorder does not have an input relay but is wired directly from the tape head to the outputs of either the latching flip-flop of the pulse initiator for a  $\pm 1$  or 2 type output pulse rate or to a second flip-flop for a  $\pm N$  output pulse rate. The physical configuration of the pulse initiator differs somewhat from the previously approved type as shown in the photograph. It does not incorporate a reverse running detent.

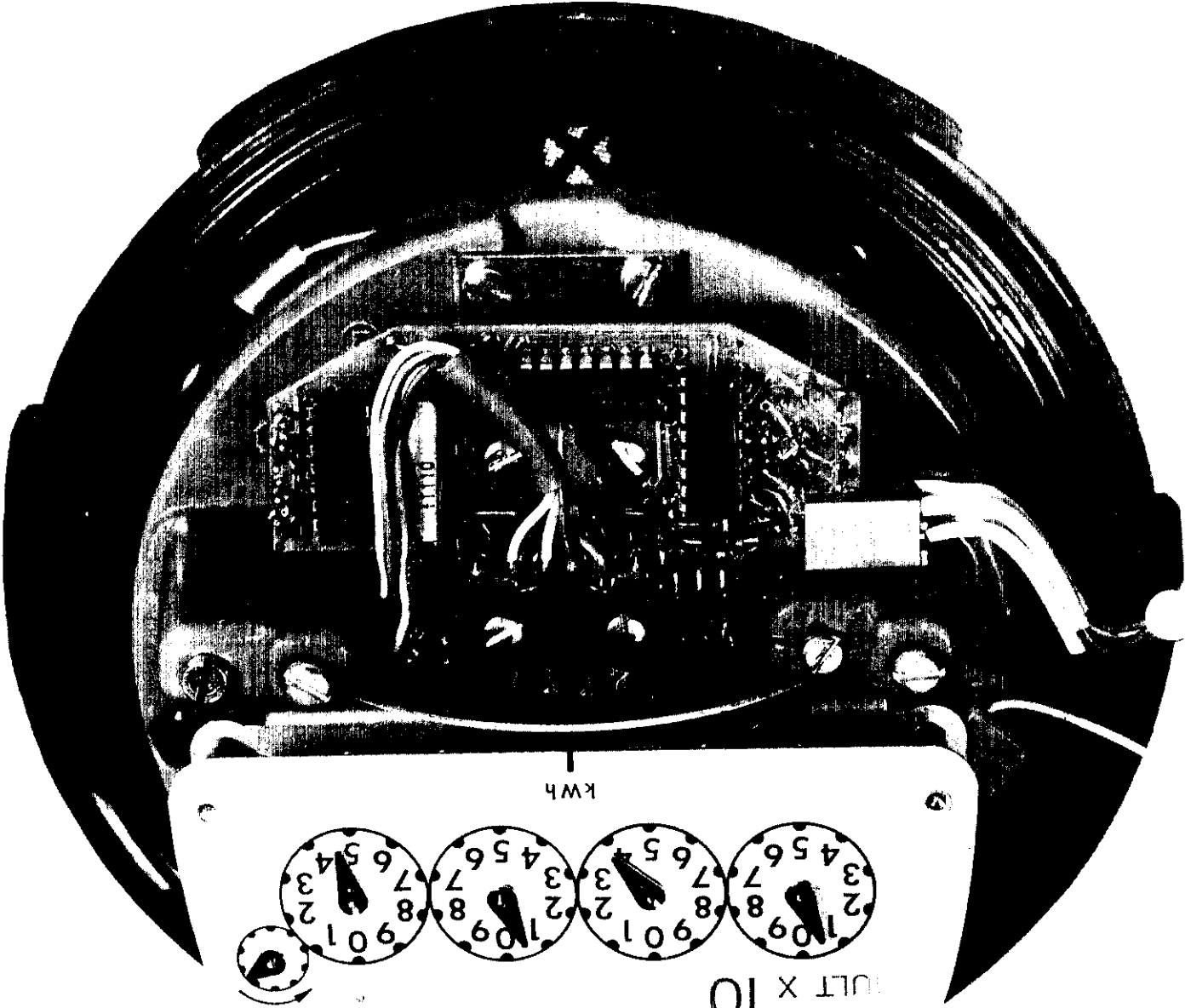
Access to the interior of the associated watt hour meter via the holes left by the removal of the cover screws may be prevented by drilling the screw heads to admit sealing wire.

Approval Granted to:

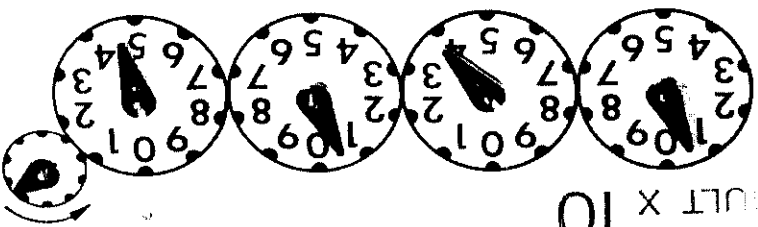
Westinghouse Canada Ltd.,  
Hamilton, Ontario.

D.L. Smith,  
Chief, Electricity & Gas Division,  
Legal Metrology Branch.

Ref: G6565-C3-10



KWH



VOLT X 10

R 138 8/9