



Department of consumer and corporate affairs / Ministère de la consommation et des corporations



STANDARDS BRANCH - DIRECTION DES NORMES

**NOTICE OF APPROVAL
AVIS D'APPROBATION**

E 111-1

OTTAWA August 14, 1973

FERRANTI-PACKARD TYPES "B5A" AND "B5S" SINGLE
PHASE WATTHOUR METERS

Current Range	0.12-10 amperes
Voltage	240 volts
Wire	2
Frequency	60 Hz
Disc Constant Kh	0.6
Register	4-dial x 1 Register ratio 166 2/3
	Gear train $\frac{\text{driven}}{\text{driver}} = \frac{100^{(2)}}{1^{(1)}} \times \frac{40}{6^{(3)}} \times \frac{60}{24} \times \frac{130}{13}$

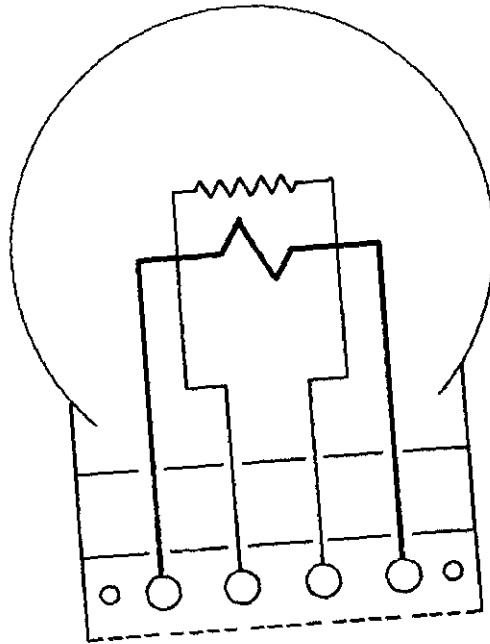
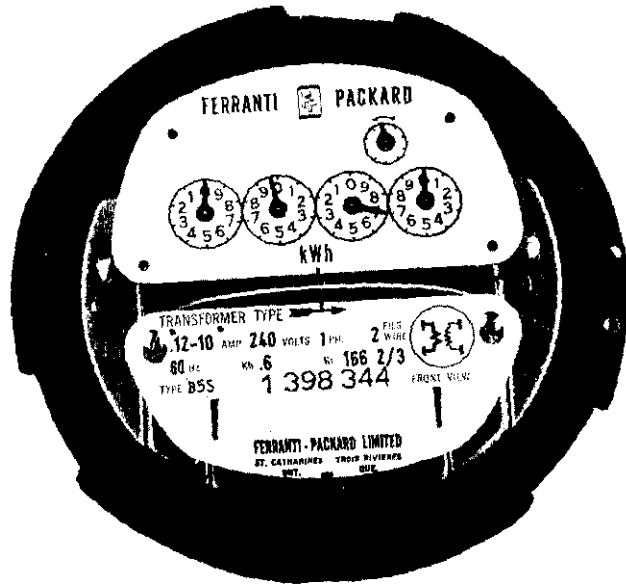
- ① Disc shaft single-start worm.
- ② Take-off gear.
- ③ Take-off shaft six-start worm.

DESCRIPTION

This notice is an extension of Approval-of-Type Notice E-111 to cover transformer type meters.

These ratings are mechanically and electrically the same as the 200 ampere ratings covered by E-111 except for the size of wire and number of turns on the current electromagnet, the disc constant and the register ratio.

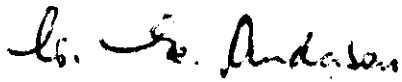
These meters are mounted on standard "A" and "S" bases with internal connections as given in standard drawings 13004-1203 and 13005-1204 and on this account the words "line" and "load" that may appear on the terminal cover and the back of the "S" base should be disregarded.



To emphasize the difference, the nameplates will carry the words "transformer type" and an internal wiring schematic on the nameplate.

Approval granted to:

Ferranti-Packard Limited,
St. Catharines, Ontario.



(for) Chief, Standards Laboratory,
Standards Branch.



W.J.S. Fraser,
Chief, Electricity & Gas Division,
Standards Branch.

Ref: GL 1145-57/F2-881 (AV)
G 1145-57/F2-881