



Department of consumer and corporate affairs / Ministère de la consommation et des corporations



STANDARDS BRANCH - DIRECTION DES NORMES

**NOTICE OF APPROVAL
AVIS D'APPROBATION**

E-60-1

OTTAWA August 15, 1974

SANGAMO TYPES "KYO-" POLYPHASE WATTHOUR METER
WITH "SR1" LOAD SURVEY RECORDER

This notice constitutes an addition to Approval Notice E-60, of September 1, 1967 and allows the use of the Sangamo type "KYOS" polyphase watt-hour meter mounted in a common socket with the type "SR1" magnetic tape Load Survey Recorder, as illustrated in the photographs, and in remote configurations where the type "KYO-" watt-hour meter is mounted separately and connected by shielded cable to the type "SR1" Load Survey Recorder.

The recorded magnetic tape data of the type "SR1" Load Survey Recorder is intended for load survey purposes only.

The type "O" Pulse Initiator is approved for use on the types "KY-" polyphase watt-hour meters under E-120 of January 25, 1973.

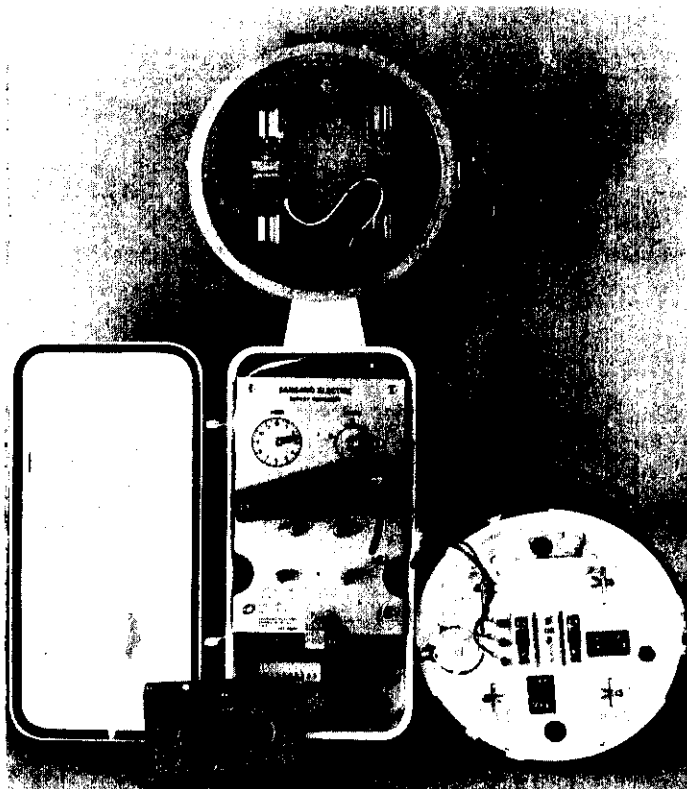
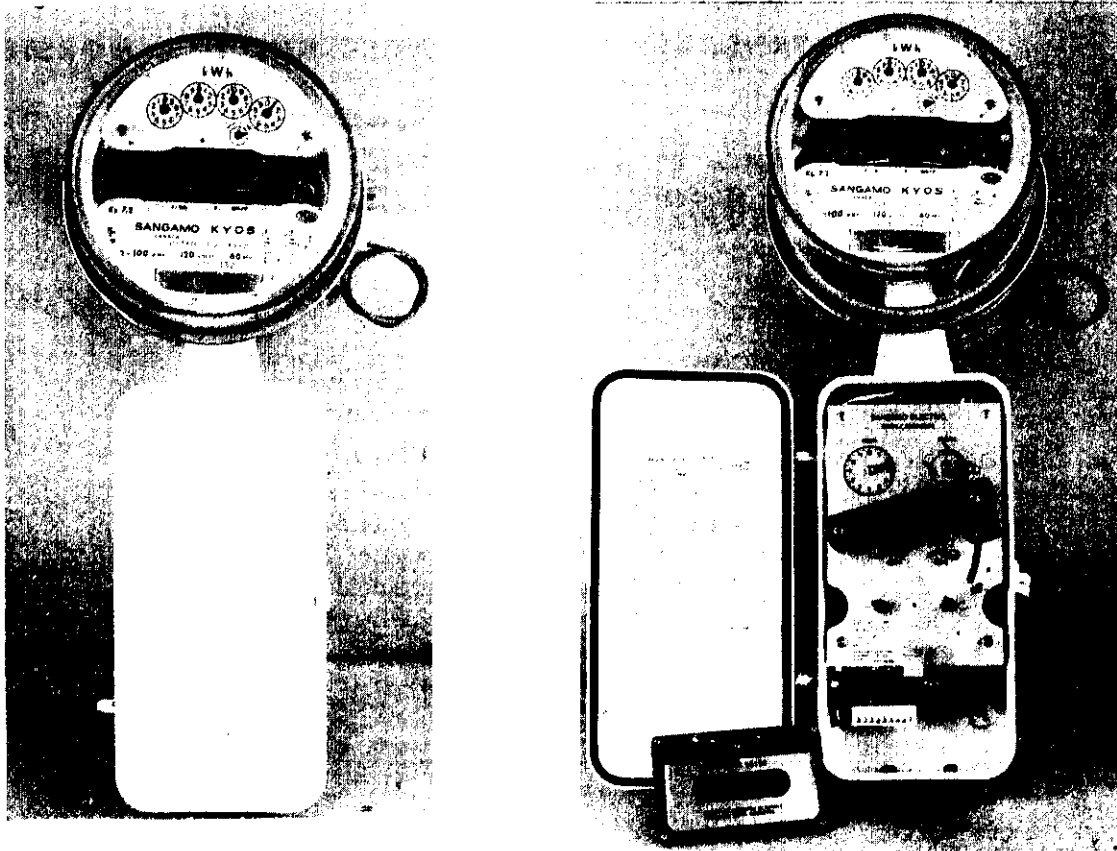
"SR1" LOAD SURVEY RECORDER RATING

Voltage	120 or 240 volts
Frequency	60Hz
Recorder Burden	8 Voltampere at rated voltage
Burden on Meter Contact	15mA at 13 V.D.C.
Maximum Input Pulse Rate	1 pulse per 2 seconds
Time Interval	15 minutes

Description

The type "SR1" Load Survey Recorder was designed and is manufactured by the Sangamo Electric Company of Springfield Illinois, U.S.A. It is a small magnetic tape recorder mounted in a drawn sheet metal weatherproof enclosure.

SANGAMO TYPE "KYOS" POLYPHASE WATTHOUR METER
AND TYPE "SRI" LOAD SURVEY RECORDER



It uses a small data cassette housing a 0.15 inch wide, 300 feet long magnetic tape, which has a capacity of up to 35 days. The tape has a double track. Pulses at a rate proportional to load are generated by a pulse initiator in the associated watthour meter and recorded on one track. The second track carries a timing pulse generated every 15 minutes by the recorder itself. The record produced on the tape can then be processed to show demand information on a 15 minute basis over an entire monthly period.

The power to the recorder (8 VA at rated voltage) is taken from the watthour meter at the same points as the potential coil of the meter (across the meter supply voltage) when mounted to a common socket or from any convenient source when mounted remotely. The voltage of recorder type "SR1" is the same as that of the meter which is stamped on its nameplate.

The cassette installation instruction label is attached on the inside of the recorder door and the grounding provision and operation information are outlined in the Instruction Manual and should be adhered to.

Approval granted to:

Sangamo Company Limited,
Toronto, Ontario.



J. L. Armstrong,
Chief, Standards Laboratory,

Metrology and Laboratory Services.



D. L. Smith,
Chief, Electricity & Gas Division,

Ref: E-60 and E-120
GL 1145-57/S2-93
G 1145-57/S2-93