



D McEwry

S.WA-3005

Approval No. d'approbation

Ottawa October 7, 1980

NOTICE OF APPROVAL – AVIS D'APPROBATION

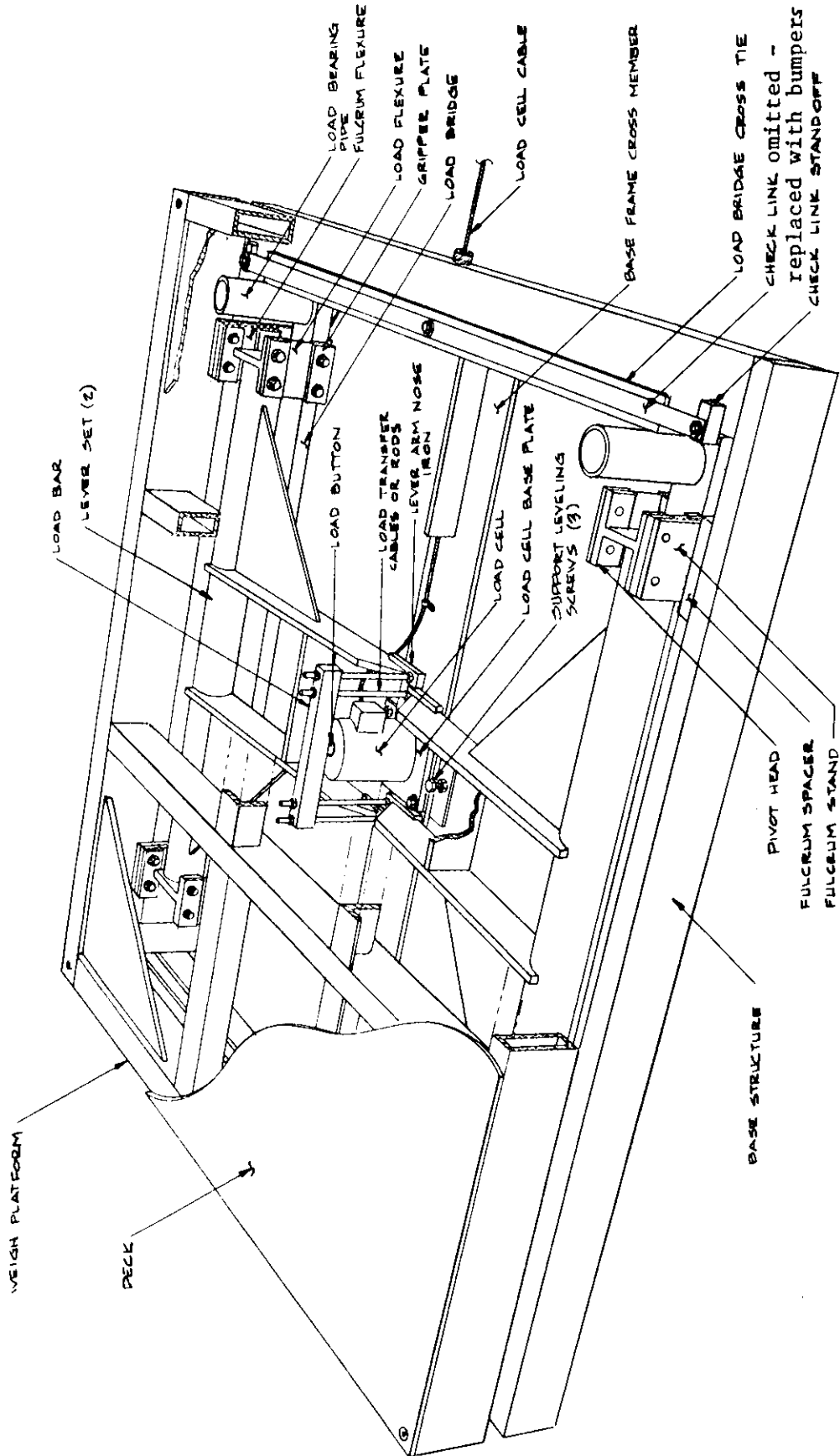
WESTERN - PLATFORM FLOOR SCALES - FLEXURE PIVOTS

MANUFACTURER: Western Scale Co., Limited
1670 Kingsway Avenue
Port Coquitlam, B.C.

TYPE OF DEVICE: Platform floor scales, lever type with single load cell, with weight indication by means of an electronic digital indicator.

<u>Model Number</u>	<u>Platform Size Inches</u>	<u>Capacity Pounds</u>
WFX-2424-1	24 x 24	1,000
WFX-3030-1	30 x 30	1,000
WFX-3636-2	36 x 36	2,000
WFX-4848-5	48 x 48	5,000
WFX-4848-10	48 x 48	10,000
WFX-6048-5	60 x 48	5,000
WFX-6060-5	60 x 60	5,000
WFX-6060-10	60 x 60	10,000
WFX-7248-5	72 x 48	5,000
WFX-7248-10	72 x 48	10,000
WFX-7260-5	72 x 60	5,000
WFX-7260-10	72 x 60	10,000
WFX-7272-10	72 x 72	10,000
WFX-8484-10	84 x 84	10,000
WFX-8484-20	84 x 84	20,000

Scales may also be furnished in equivalent metric capacity.



APPROVED ACCESSORIES: A scale may be equipped with any compatible and approved type of electronic indicator and accessories.

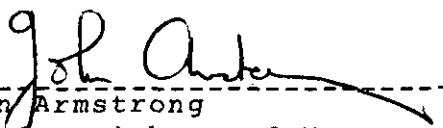
APPLICATION: Weighing in general trade.

DESCRIPTION: These scales utilize two T-shaped load levers of welded steel construction with tubular torsion shafts. In lieu of the conventional arrangement of pivots and bearings these scales are equipped with stainless steel flexure plates at the load bearing and fulcrum locations in the lever system.

Load lever outputs are applied, through a summing load bar, to a load cell, with compression loading. Horizontal displacement of the weighbridge is restricted by means of adjustable bumper bolts.

CONDITIONS OF APPROVAL: Approval is granted under the Weights and Measures Act, S.C. 1970-71-72, Chapter 36, and the Weights and Measures Regulations (C. 1605) for use in Canada under the general conditions of the said Regulations and under any special conditions listed above.

REFERENCE: ²¹⁸ G6922-W172-10



John Armstrong
Chief, Weights and Measures
Legal Metrology Branch