



Ottawa September 25, 1980

NOTICE OF APPROVAL - AVIS D'APPROBATION

WESTERN - MOTOR TRUCK SCALES - TENSION CELL TYPE

MANUFACTURER: Western Scale Co., Ltd.
1670 Kingsway Ave.
Port Coquitlam, B.C.

TYPE OF DEVICE: Motor truck scales, full electronic type, utilizing tension load cells.

<u>Model No.</u>	<u>Maximum Cap.-Tons</u>	<u>Platform Length-Ft.</u>	<u>No. of Sections</u>	<u>Load Cell Cap.-Lb.</u>
FLC 251020-2	20	25	2	20K
FLC 251030-2	30	25	2	20K
FLC 341030-2	30	34	2	20K
FLC 401030-2	30	40	2	20K
FLC 451050-3	50	45	3	50K
FLC 501050-3	50	50	3	50K
FLC 601050-3	50	60	3	50K
FLC 601060-3	60	60	3	50K
FLC 701050-3	50	70	3	50K
FLC 701060-3	60	70	3	50K
FLC 701075-3	75	70	3	50K
FLC 801050-4	50	80	4	50K
FLC 801060-4	60	80	4	50K
FLC 801075-4	75	80	4	50K
FLC 801475-4	75	80	4	50K
FLC 901050-4	50	90	4	50K
FLC 901060-4	60	90	4	50K
FLC 1001070-5	70	100	5	50K
FLC 1201050-5	50	120	5	50K
FLC 1201060-5	60	120	5	50K

Scales may be furnished in equivalent metric capacity.
The standard platform width is 10 feet.
Model 801475 only has a platform of 14 feet width.

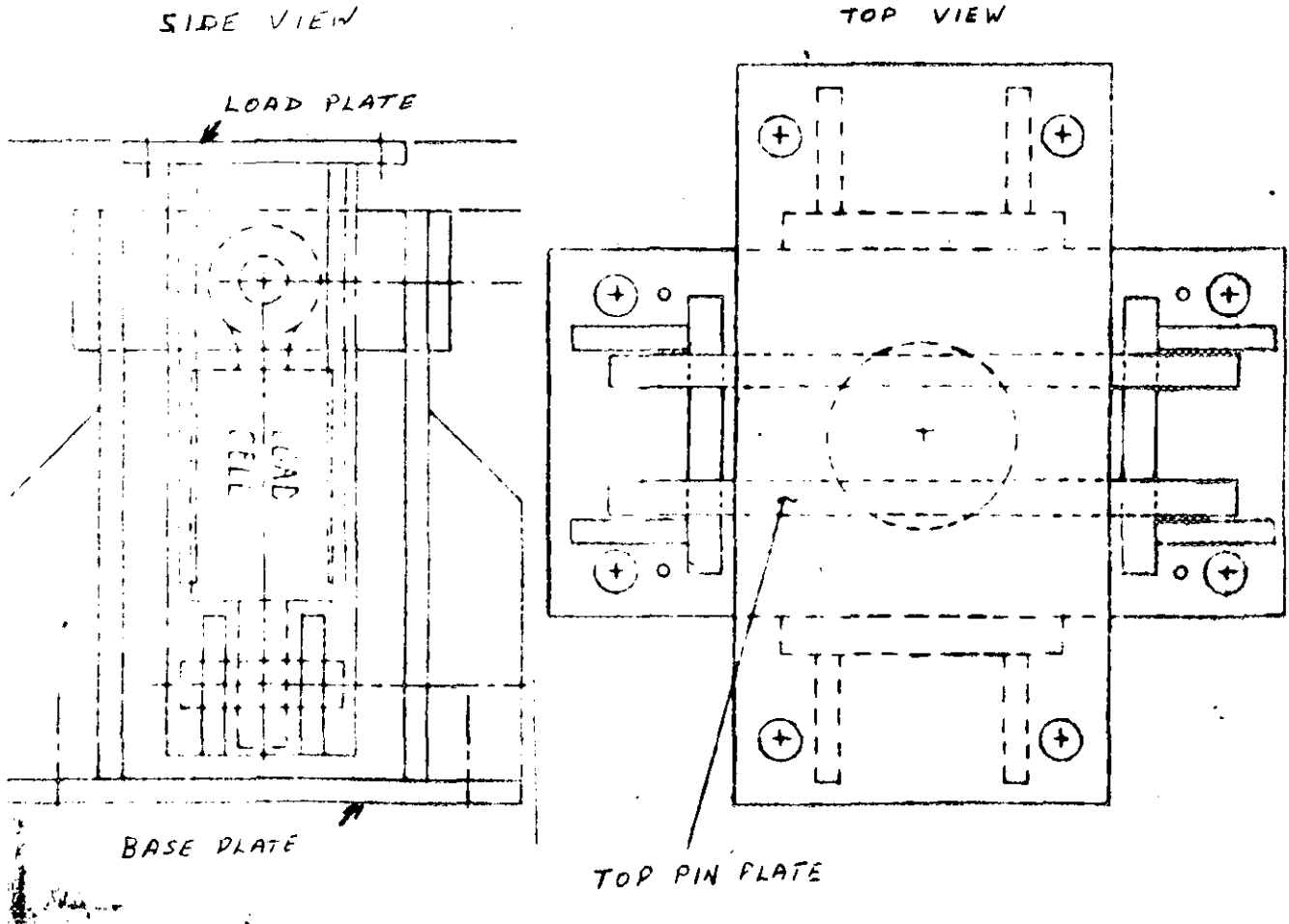
APPROVED ACCESSORIES: These scales may be used in conjunction with any compatible and approved types of indicator, weight printer and other accessories.

.../2

Application: The weighing of loaded and empty motor vehicles in trade.

Device Description: These scales utilize tension type load cells. Platform load is transferred to the cells by means of double link suspension assemblies in conjunction with load bearing pins.

Platform movement is restricted by means of adjustable bumper bolts which act between the weighbridge and the pit wall.



Conditions of Approval: Approval is granted under the Weights and Measures Act, S.C. 1970-71-72, chapter 36, and the Weights and Measures Regulations C.R.C.c., 1605 for use in Canada under the general conditions of the said Regulations, and under any special conditions listed above.

File No.: G6922-W172-15

John Armstrong

 John Armstrong
 Chief
 Weights and Measures Division
 Legal Metrology Branch