



Consumer and
Corporate Affairs

Consommation et
corporations

Standards

Normes

This approval supersedes
S.WA-T112, dated Jan. 2, 1979

**NOTICE OF APPROVAL
AVIS D'APPROBATION**

S.WA-1148

Ottawa, December 31, 1979

FAIRBANKS ELECTRONIC FLOOR SCALES - UNICELL TYPE

MANUFACTURER: Weigtech Group, Fairbanks Scales
91 Esna Park Drive
Markham, Ontario

TYPE OF SCALE: Permanently installed floor scales having the weigh-
bridge supported by 4, 6 or 8 strain gauge load cells of Fairbanks
"Unicell" type.

USE OF SCALE: Static weighing in general trade.

MODEL NUMBERS AND CAPACITIES:

<u>Scale Model</u>	<u>Number of Load Cells</u>					
	<u>Four</u>		<u>Six</u>		<u>Eight</u>	
	<u>Lb.</u>	<u>Kg.</u>	<u>Lb.</u>	<u>Kg.</u>	<u>Lb.</u>	<u>Kg.</u>
90-9010/F	10,000	4,550	15,000	6,800	20,000	9,100
90-9011/F	20,000	9,100	30,000	13,600	40,000	18,200
90-9012/F	30,000	13,600	45,000	20,400	60,000	27,200

READOUT: A scale may be equipped with any approved type of indicator
and accessories with which it is compatible.

DEVICE DESCRIPTION: These scales are full load cell type, utilizing
load cells of bending beam type which are fixed at one end to a
mounting block which is welded to the base of the Unicell unit. The
free end of the cell is equipped with a yoke to which is attached a
socket which supports a load receiving plate assembly. See Fig. 1
and Fig. 2.

The load cells support a platform frame which may serve as an
open or a covered weighbridge structure, or may incorporate a set of
free-running rollers for use with a roller conveyor system.

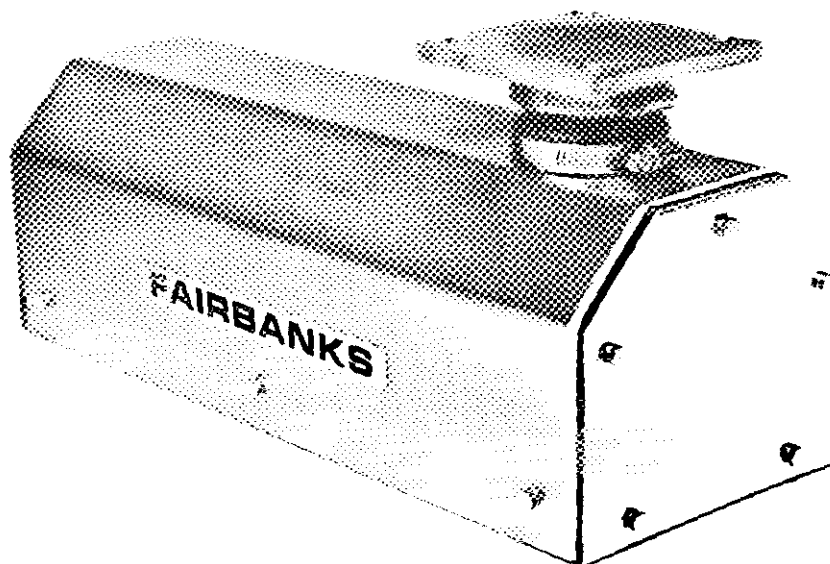


Fig. 1: UNICELL ASSEMBLY

MODEL	CAPACITY	SHIP WT.	DIMENSIONS IN INCHES					
			A	B	C	D	E	F
90-9010	2500 lbs.	80 lbs.	15.88	6.40	7.75	5.62	4.00	3.00
90-9011	5000 lbs.	100 lbs.	17.50	8.40	9.12	7.12	5.00	3.75
90-9012	7500 lbs.	100 lbs.	17.50	8.40	9.12	7.12	5.00	3.75

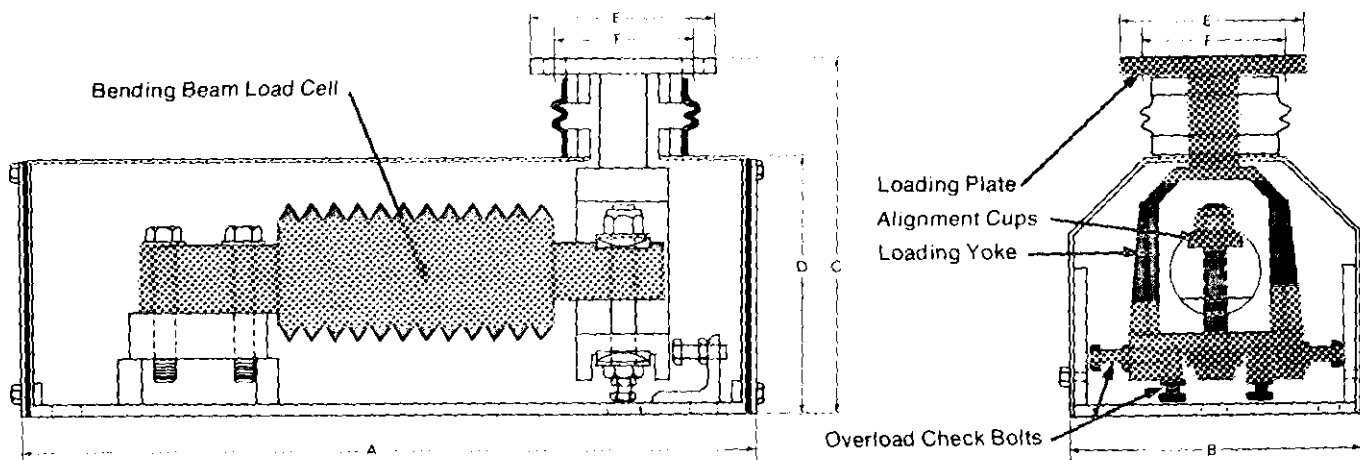


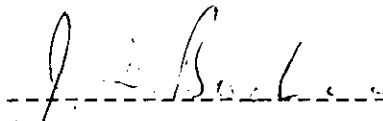
Fig. 2: UNICELL ASSEMBLY DETAILS

INSTALLATION REQUIREMENTS:

1. Electrical cables associated with the load cell system must not be installed in the same conduit with power cables.
2. All load cells in a particular installation must be of the same capacity rating.

FILE: G6922-F156-10

CONDITIONS OF APPROVAL: Approval is granted under the Weights and Measures Act, S.C. 1970-71-72, Chapter 36, and the Weights and Measures Regulations (C. 1605) for use in Canada under the general conditions of the said Regulations, and under any special conditions listed above.



John Buchanan
Acting Chief
Weights and Measures Division
Legal Metrology Branch

