



**NOTICE OF APPROVAL  
AVIS D'APPROBATION**

S.WA-887

Revision 1

Ottawa, October 2, 1975

FAIRBANKS MORSE CABINET MOUNTED DIALS-SERIES 42-9000

Manufacturer: Colt Industries (Canada) Ltd.,  
Fairbanks Morse Division,  
Don Mills, Ontario

Apparatus: Series 42-9000 Indicating Dials, cabinet  
mounted, with tare beams and optional unit  
weights.

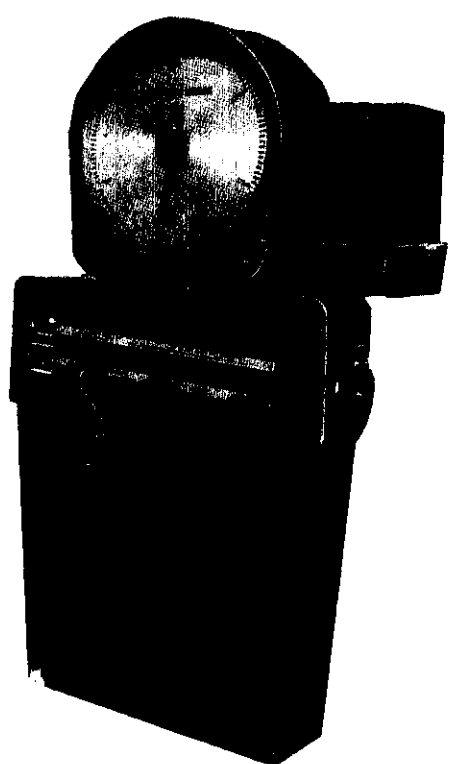
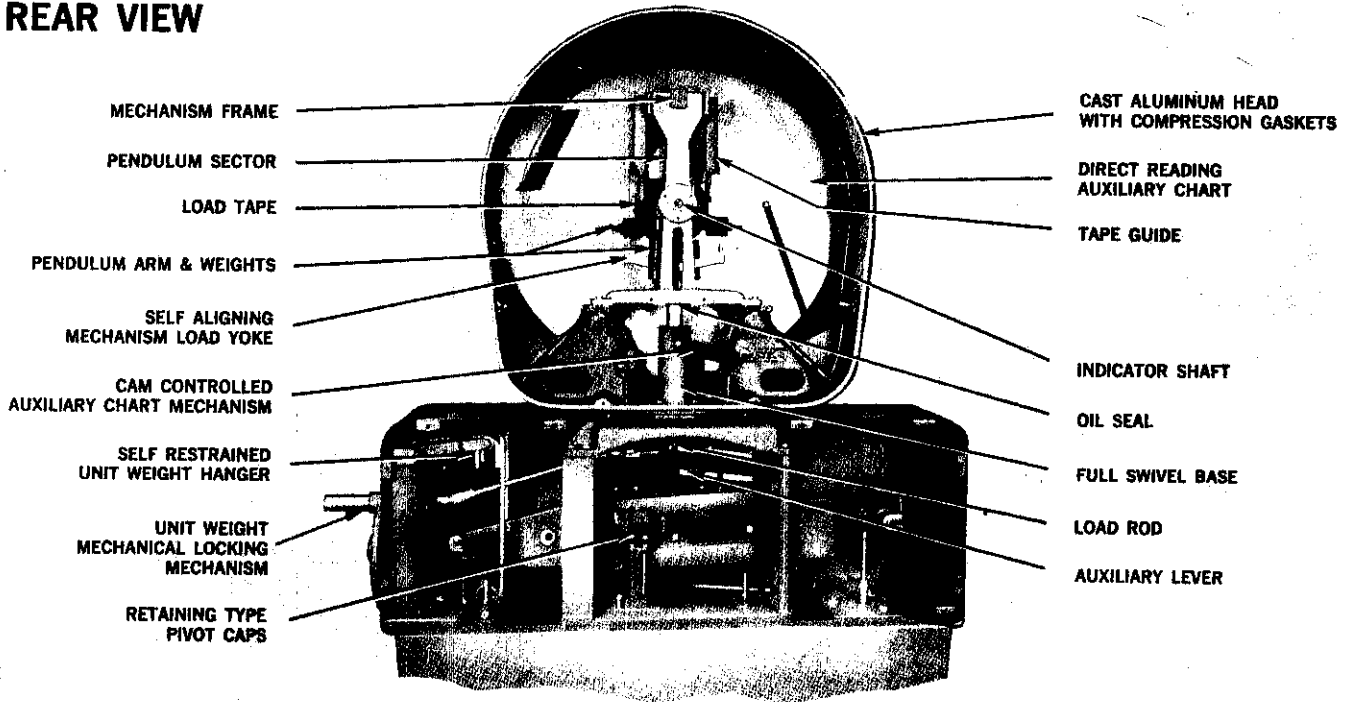
| <u>Model No.</u> | <u>Chart Cap.</u><br><u>Pounds</u> | <u>Beam Capacity - lb.</u> |                   |
|------------------|------------------------------------|----------------------------|-------------------|
|                  |                                    | <u>Minor Beam</u>          | <u>Major Beam</u> |
| 42-9000BK        | 500X½                              | 125X½                      | 500X100           |
| 42-9000DA        | 600X½                              | 125X½                      | 500X100           |
| 42-9000BM        | 1000X1                             | 250X1                      | 1000X200          |
| 42-9000BP        | 1200X1                             | 250X1                      | 1000X200          |
| 42-9000BN        | 2000X2                             | 500X2                      | 2000X500          |
| 42-9000BQ        | 2400X2                             | 500X2                      | 2000X500          |
| 42-9000BR        | 5000X5                             | 1250X5                     | 5000X1000         |
| 42-9000CK        | 6000X5                             | 1250X5                     | 5000X1000         |
| 42-9000BS        | 10000X10                           | 2500X10                    | 10000X2000        |
| 42-9000BT        | 12000X10                           | 2500X10                    | 10000X2000        |
| 42-9000BU        | 20000X20                           | 5000X20                    | 20000X5000        |
| 42-9000BV        | 24000X20                           | 5000X20                    | 20000X5000        |
| 42-9000BW        | 50000X50                           | 12500X50                   | 50000X10000       |
| 42-9000CU        | 60000X50                           | 12500X50                   | 50000X10000       |

All of the above models may be equipped with up to nine unit weights. When unit weights are fitted, the model number is modified so that the final digit indicates the number of unit weights installed. For example, when a series BK indicator is equipped with five unit weights the model number becomes 42-9005 BK.

All models may be equipped with the Fairbanks Morse Printomatic II weight printer.

FAIRBANKS MORSE CABINET MOUNTED DIALS-SERIES 42-9000

**REAR VIEW**



- 3 -

APPLICATION: For use in conjunction with approved types of Fairbanks Morse scale lever systems.


DESCRIPTION: This dial mechanism is double pendulum type with rack and pinion indicator drive. The mechanism is generally similar to the earlier CA series of Fairbanks Morse dials listed on S.WA-343, except for changes in the pendulum assemblies.

The pendulum sectors are zinc die castings rather than being of brass as formerly. Also, the pendulum arms are now equipped with horizontal balance weights which replace the screw-operated cam adjusters formerly used for linearity adjustment.

TESTING: The standard tests for dial scales shall apply.

REFERENCE: GL 1153-57/F156-351.

Conditions of Approval: Approval is granted under the Weights and Measures Act, S.C. 1970-71-72, Chapter 36, and the Weights and Measures Regulations P.C. 1974-1461 of June 27, 1974 for use in Canada under the general conditions of the said Regulations, and under any special conditions listed above.

  
R.W. Maclean  
Director General  
Standards Directorate