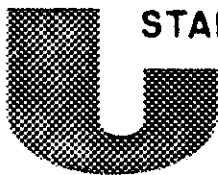




Department of consumer and corporate affairs / Ministère de la consommation et des corporations



STANDARDS BRANCH - DIRECTION DES NORMES

## NOTICE OF APPROVAL

S.WA-810

OTTAWA Feb. 23, 1971.

Approved: VERY MOTOR TRUCK SCALES - MODEL 5106

manufactured by W. & T. Avery Ltd., Birmingham, England.  
Canadian Distributor: Robert Morse Corporation Limited, Dominion Industrial Building,  
Ville St. Pierre, Quebec.

Apparatus Listed: Motor Truck Scale, Model 5106.

<u>Max. Platform Length-Feet</u>	<u>No. of Sections</u>	<u>Lever System</u>	<u>Max. Capacity Tons</u>
20	2	2 main levers 1 transfer lever	22
30	2	2 main levers 2 connecting levers 1 transfer lever	32
60	4	4 main levers 1 transfer lever	62

Indicating and recording equipment is identified by means of a suffix to the model number, as follows -

Suffix

BEAM INDICATION - NO LOOSE WEIGHTS

- ABH - Indicating beam, graduated in one unit of weight, tare beam optional.
- ABF - Indicating beam of triangular section, with graduations in 2 or 3 units of weight.
- DBG - Indicating beam, graduated in one unit of weight, with hand operated ticket printer.

CABINET DIALS WITH TARE BEAMS

- BLB - 1, 2, 3 or 4 unit weights

OPTICAL PROJECTION INDICATOR

FCA - Single pendulum mechanism, optional unit weights

CABINET DIALS WITH WEIGHT RECORDER  
ELECTRICALLY - OPERATED PRINTER WITH MANUAL OPTION  
OPTIONAL TARE BEAMS

- DIA - No unit weights
- DLB - 1, 2, 3 or 4 unit weights
- DMN - No unit weights, double pendulum mechanism
- DON - No unit weights, spring resistant mechanism
- DMG - 1, 2, 3 or 4 unit weights, double pendulum mechanism
- DOG - 1, 2, 3 or 4 unit weights, spring resistant mechanism.

Load Rating: Maximum capacities are as listed above.

Application: The weighing of commodities in trade.

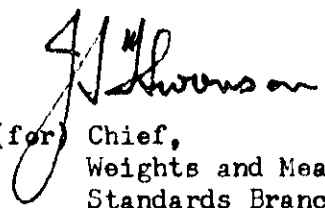
Description: These scales utilize load lever arrangements as listed above. All underdeck levers are of cast construction, the components being assembled by the use of steel bolts. Scale load is transmitted to the lever system by means of self-aligning suspension links.


Scales may be equipped with dial or beam indication as listed above.  
Load platforms are of steel plate.

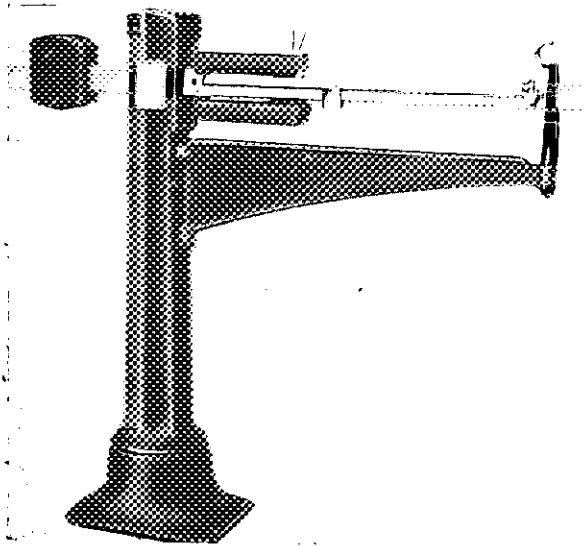
Testing: The standard tests for motor truck scales shall apply.

References: SW-85-A3  
SL-102-360

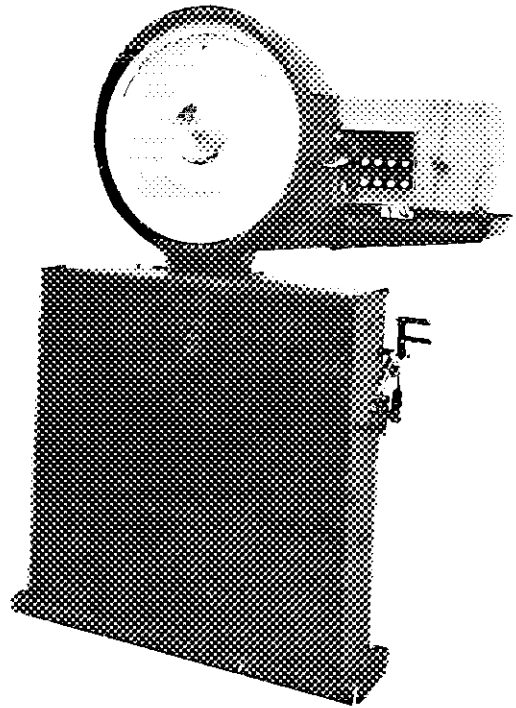
Note: Approval is granted under the Weights and Measures Act, Chapter 292, and Regulations thereunder (P.C. 6894) for use in Canada under the general conditions of P.C. 6894, and under any special conditions listed above.

  
(for) Chief,  
Weights and Measures Division,  
Standards Branch.

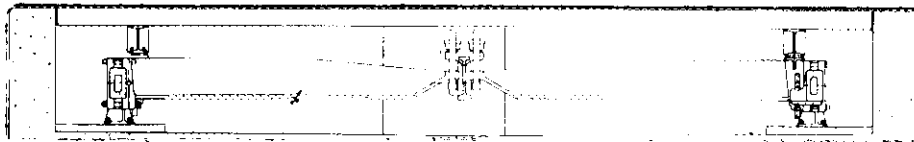
  
R.W. MacLean,  
Director,  
Standards Branch.



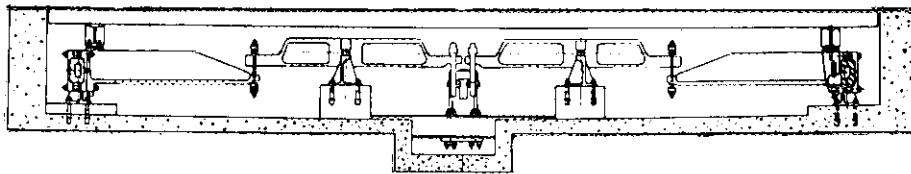
AFB BEAM



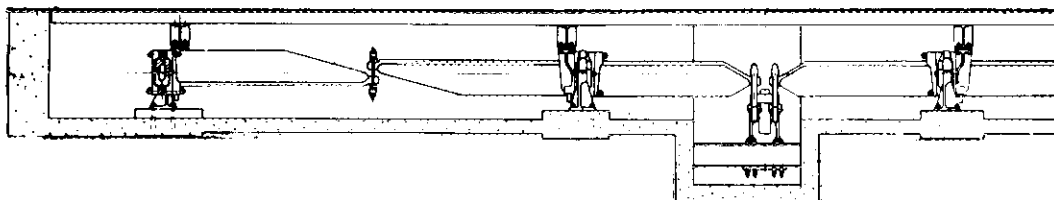
DMG/DCG INDICATOR



THREE LEVER-TWO SECTION



FIVE LEVER-TWO SECTION



FIVE LEVER-FOUR SECTION