



Consumer and  
Corporate Affairs

Consommation et  
corporations

Standards

Normes

**NOTICE OF APPROVAL  
AVIS D'APPROBATION**

S.WA-672

Ottawa, November 27, 1975

FAIRBANKS EQUAL ARM COUNTER SCALES

Manufacturer: Colt Industries (Canada) Ltd.,  
Fairbanks Weighing Division,  
Don Mills, Ontario

Apparatus: Equal Arm Counter Scales

| <u>Current Model No.</u> | <u>Old Model No.</u> | <u>Capacity-Lb.</u> |
|--------------------------|----------------------|---------------------|
| 46-5051                  | 41-5051              | 6                   |
| 46-5057                  | 41-5057              | 10                  |
| 46-5061                  | 41-5061              | 16                  |
| 46-5064                  | 41-5064              | 25                  |
| 46-5151                  | 41-5151              | 6                   |
| 46-5157                  | 41-5157              | 10                  |
| 46-5161                  | 41-5161              | 16                  |
| 46-5164                  | 41-5164              | 25                  |

Rating: Capacities are as listed above.

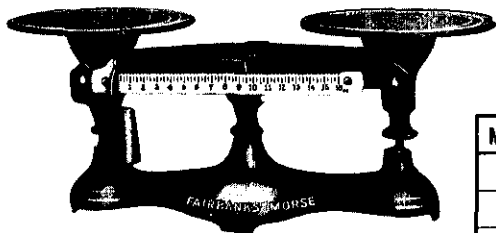
Application: The weighing of commodities in trade.

Description: These scales are equal arm, pan over beam type with stabilizing links housed within the base structure.

Model series 46-5000 and series 46-5100 are of similar construction, except that series 46-5100 only is equipped with a side beam, the beam capacity being 1 pound or 2 pounds.

The load plates, the beam, the base and other structural components are of cast iron with enamel finish.

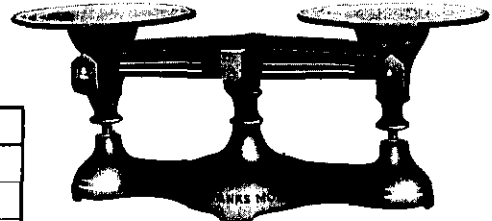
Testing: The standard tests for equal arm counter scales shall apply.

FAIRBANKS EQUAL ARM COUNTER SCALES

With Two Iron Plates and Side Beam

| MODEL NO. | CAPACITY | BEAM        | PLATES   | OVERALL DIMENSIONS    | WEIGHT (W. W.) |
|-----------|----------|-------------|----------|-----------------------|----------------|
| 46-5151   | 6 lbs.   | 16 x ¼ ozs. | 6" Dia.  | 15½" x 6" x 6¼" Tall  | 23 lbs.        |
| 46-5157   | 10 lbs.  | 16 x ¼ ozs. | 7" Dia.  | 18" x 7" x 7" Tall    | 38 lbs.        |
| 46-5161   | 16 lbs.  | 16 x ¼ ozs. | 9" Dia.  | 23½" x 9" x 8½" Tall  | 53 lbs.        |
| 46-5164   | 25 lbs.  | 32 x ¼ ozs. | 10" Dia. | 28½" x 10" x 10" Tall | 78 lbs.        |

With Two Iron Plates




| MODEL NO. | CAPACITY | PLATES   | OVERALL DIMENSIONS    | WEIGHT (W.W.) |
|-----------|----------|----------|-----------------------|---------------|
| 46-5051   | 6 lbs.   | 6" Dia.  | 15½" x 6" x 6¼" Tall  | 36 lbs.       |
| 46-5057   | 10 lbs.  | 7" Dia.  | 18" x 7" x 7" Tall    | 48 lbs.       |
| 46-5061   | 16 lbs.  | 9" Dia.  | 23½" x 9" x 8½" Tall  | 53 lbs.       |
| 46-5064   | 25 lbs.  | 10" Dia. | 28½" x 10" x 10" Tall | 115 lbs.      |

November 27, 1975

.../3

Reference: GL1153-57/F156

Conditions of Approval: Approval is granted under the Weights and Measures Act, S.C. 1970-71-72, Chapter 36, and the Weights and Measures Regulations P.C. 1974-1461 of June 27, 1974 for use in Canada under the general conditions of the said Regulations, and under any special conditions listed above.

  
R. W. MacLean  
Director General  
Standards Directorate