



DEPARTMENT OF TRADE AND COMMERCE
STANDARDS BRANCH

OTTAWA, April 28, 1964.

APPROVAL LISTING

EASTERN SCALE -- WESTERN SCALE
OVERHEAD ABATTOIR AND/OR MONO-RAIL SCALE

Under the provisions of the Weights and Measures Act, Chapter 292, R.S.C. 1952, and Regulations thereunder (P.C. 6894), the apparatus specified and illustrated herein have been listed as approved devices and may be used in Canada in accordance with the conditions applicable.

Apparatus Listed: Overhead Abattoir and/or Mono-Rail Scales Models A.B.-B, A.B.-P.D. and A.B.-C.D. manufactured by Eastern Scale Works Limited, 30 Carnforth Road, Toronto 16, Ontario and Western Scale Company Limited, 680 Industrial Avenue, Vancouver 10, B.C.

Explanation of Model Code:

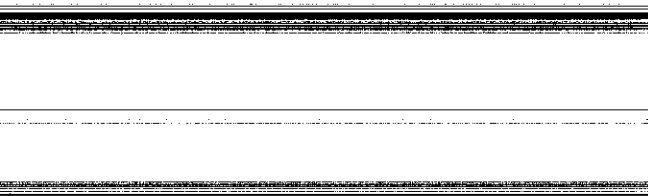
Model A.B.-B is the standard model with beam
Model A.B.-P.D. standard model fitted with pedestal dial
Model A.B.-C.D. standard model fitted with cabinet dial
When the symbol M is used after the model number, it indicates
Mono-rail scale instead of single-rail abattoir scale.

Rating of Apparatus: Capacities 500 pounds to 3000 pounds.

Application: Static weighing of merchandise such as animal carcasses suspended from an overhead track.

Conditions: As prescribed in P.C. 6894.

Description: These devices are overhead track or mono-rail scales whose load receiving rail forms a section of an overhead conveyor system. The leverage system consists of two fabricated main levers which are linked to a transfer lever. This assembly is suspended in line with the conveyor system. Power is transferred from the transfer lever through a connecting rod to the indicating unit. Check links are installed in the leverage system to prevent lateral or end movement of the live rail.



C

C



All Dial Heads may be equipped with or without ticket printer. Dial heads are supplied by Detecto Scale Company, New York, U.S.A.

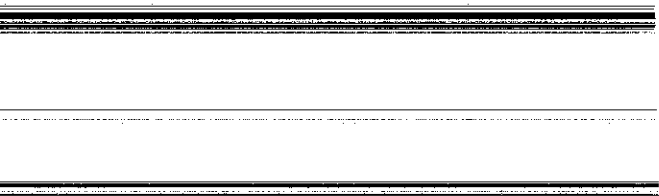
When the load receiving element of this device has an I beam type track, it is known as an Overhead Mono-Rail Scale. When the bar steel type track is used it is known as an Overhead Abattoir Scale.

Testings: The standard tests for an overhead track scale shall apply.

S. Phillips
S. Phillips,
Chief, Weights & Measures Division,
Standards Branch.

R. W. Maclean
R. W. Maclean,
Director,
Standards Branch.

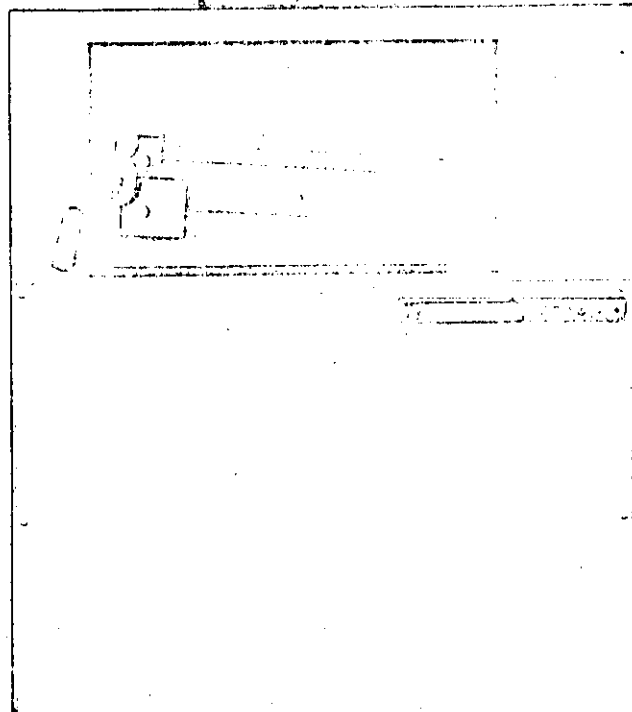
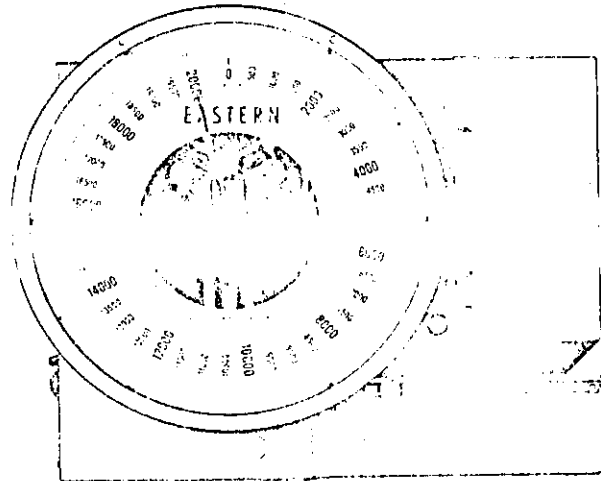
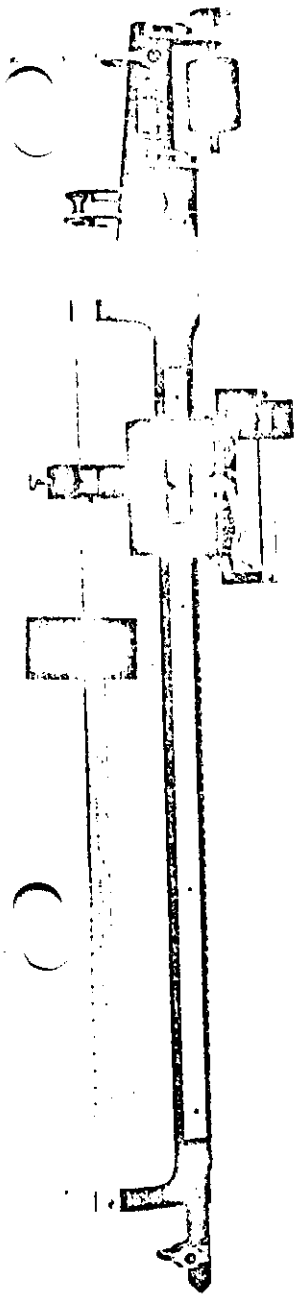
Ref: SL-102-664

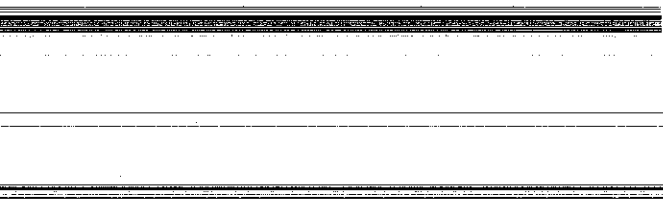


C

C

EASTERN SERIES OF ABATTOR SCALE
OVERHEAD ABATTOR AND/OR MONO-RAIL SCALE





EASTERN SCALE -- WESTERN SCALE
OVERHEAD ABATTOIR AND/OR MONO-RAIL SCALE

