



Department of consumer and corporate affairs / Ministère de la consommation et des corporations



STANDARDS BRANCH - DIRECTION DES NORMES

NOTICE OF APPROVAL

S.WA-197

Revision (1)

OTTAWA, July 30, 1969.

Approved: TOLEDO STRAIGHT LEVER VEHICLE SCALES - DIAL INDICATION

manufactured by Toledo Scale Company of Canada Ltd., 2462 Howard Avenue, Windsor, Ont.

Apparatus Listed: Dormant Vehicle Scales, equipped with Toledo mechanical dial indicating heads or with Toledo Lectrolever and optional dial or digital readout. Scales may be identified by the trade names "Hi-Weigh" and "Truckmaster".

Mechanical dial indicating scales may utilize any of the conventional models of Toledo dial heads and may also be equipped with beams, unit weights and Toledo Printweigh weight printer.

Scales with the Lectrolever feature may utilize any of the following types of readout instrument -

Analog Dial - Toledo "Lectrodial", Model 8110 (solid state)

Analog Dial - Toledo Model 42 (Tube Type)

Digital Indicator - Toledo "Digicator", Model 8100.

Any of the above readouts may be equipped with Printweigh weight printer.

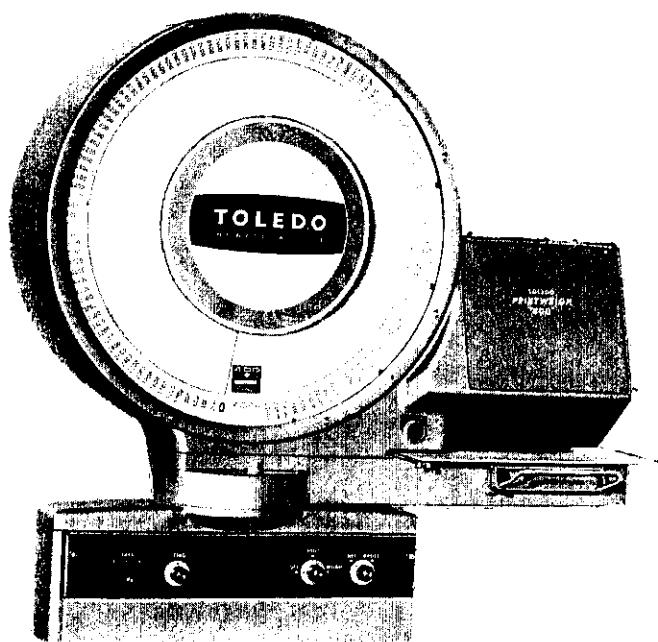
Scale Model Number

<u>Cast Levers</u>	<u>Fabricated Steel Levers</u>	<u>No. of Sections</u>	<u>Maximum Capacity-Pounds</u>
2591	2592	2	32,500
2691	2692	2	45,000
2791	2792	2	80,000
2780	2781	4	112,500
2890	2891	4 or 5	125,000
	2895	4 or 5	160,000

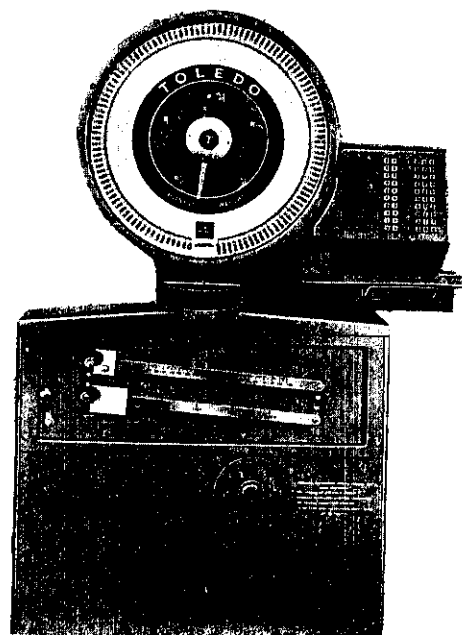
The model number of the readout instrument is added as a suffix to the scale model number for scales with the Lectrolever feature.

Rating of Apparatus: Maximum Capacity - 80 tons

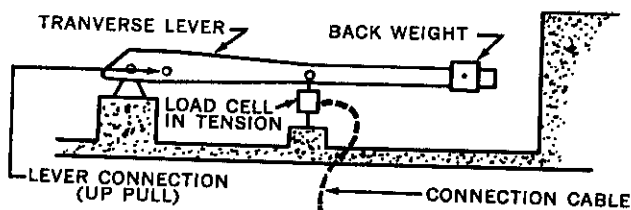
Application: The weighing of loaded or unloaded vehicles in trade.



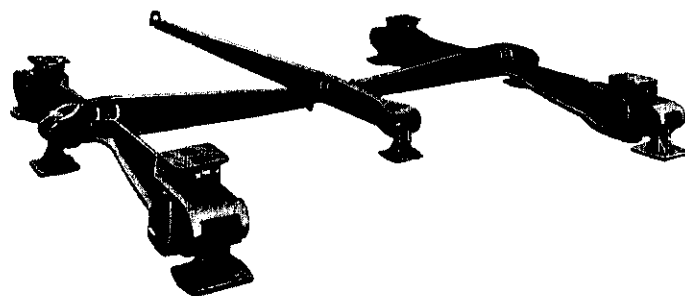
LECTROLLAL



NO. 34 DIAL HEAD



LECTROLEVER AND DIGICATOR



TWO SECTION LEVER SYSTEM

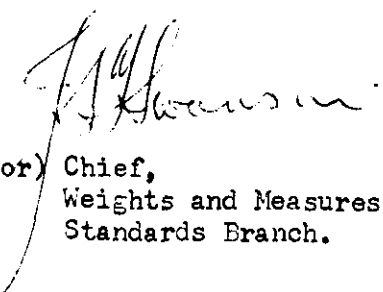
Description: These devices are dormant platform scales, with levers of cast or fabricated steel construction. Lever arrangements are the same for both types of lever construction. Suspension bearings are parallel link type.


The Lectrolever feature utilizes an electrical resistance strain gauge load cell connected to the transverse lever of the scale. The load cell output voltage is suitably amplified and fed to the readout instrument.

Testing: The standard tests for a vehicle scale shall apply.

References: SW-85-T6
SI-102-779

Note: Approval is granted under the Weights and Measures Act, Chapter 292, and Regulations thereunder (P.C. 6894) for use in Canada under the general conditions of P.C. 6894, and under any special conditions listed above.


(for) Chief,
Weights and Measures Division,
Standards Branch.


R. W. MacLean,
Director,
Standards Branch.