

TRADE AND COMMERCE
CANADA

STANDARDS DIVISION

OTTAWA, December 12, 1947.

NOTIFICATION OF TYPE APPROVAL

The apparatus specified and illustrated herein have been duly approved under the provisions of the appropriate Act, and may be admitted to verification in Canada.

Authority:- Weights and Measures Act, Chapter 212, R.S. 1927.

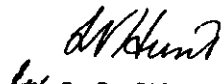
Ruling Body:- The Approvals Board, Standards Division.

Apparatus Approved:- Indicators - Over and Under, and Balance - (Paddle Dash Pot), Models A, C, and D, manufactured by the Spinks Scale Company, Atlanta, Ga., U.S.A.

Description:- Spinks indicators are devices to be attached to the beam of a scale to indicate balance in a similar way to the "over and under" attachment on an equal-arm balance. The indicator is supported on knife edges, and the lower part of the moving element carries a paddle operating in an oil-bath, for damping oscillatory motion. The amount of this damping is controlled by inclining the paddle to the direction of motion, and reducing frontal area, or by using different grades of oil. One feature of this device is an adjustable weight on the indicator stem, by which the centre of gravity of the moving element can be raised or lowered, which in turn changes the S.R. of the scale to which it is attached. Thus the pointer deflection for a given amount of unbalance, say the smallest beam graduation, can be standardized for any scale. By this means, the indicator can show not only the fact of "over" and "under" condition, but also, to a limited extent, the poise movement required to achieve balance.

Models A, C, and D differ only in the position occupied by the indicator relative to the scale, and do not embody any change in mechanism.

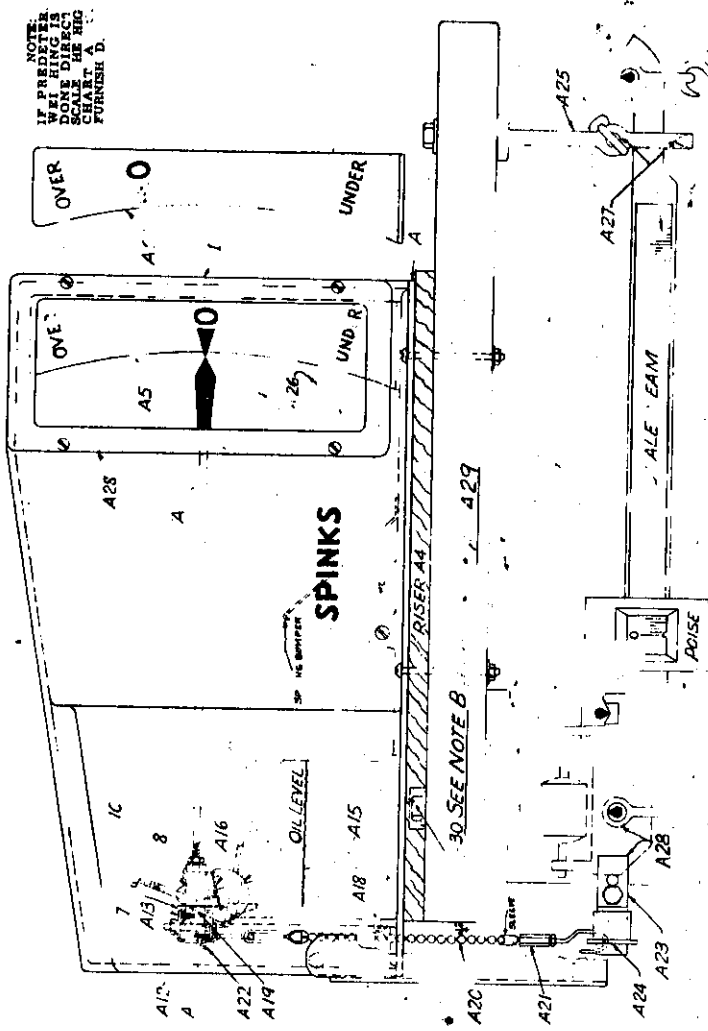
Testing:- Scales should be tested with the indicator in place, but in the event of the test revealing errors, the indicator should be uncoupled and the test repeated to ensure that the indicator itself is not a contributing factor.


for J. L. Stiver,
Chairman, Approvals Board


A. F. Gill,
Director of Standards

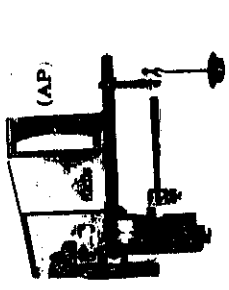
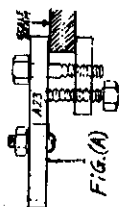
SPINKS 'OVER AND UNDER, AND BALANCE' INDICATORS
(PADDLE DASH POT)

SD-VL.1

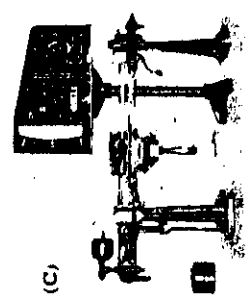


NOTE:
IF PREDICTOR
WEIGHING IS
SCALE DIRECT
CHART A
FURNISH D.

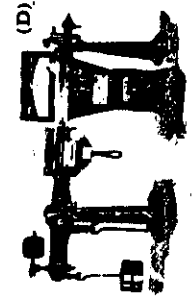
NOTE A30:
IF THE COLUMN B... NUT... ABOVE THE CAP A2C
USE THE HALF INCH WOOD RIFLER A4 CUT A4 TO FIT
AROUND THE A30. IF NUTS A30 DO NOT TEND
ABOVE CAP A29 IT IS NOT NECESSARY TO USE
RIFLER A4



MODEL "A"



MODEL "C"



MODEL "D"

COUNTERPOISE CUP

DIAGRAM MODEL "A"