



Department of consumer and corporate affairs / Ministère de la consommation et des corporations



SPG-146

3585-3  
SL-100-SPG  
1147-4

OTTAWA, December 31, 1971.

TEMPORARY SPECIAL APPROVAL

Granted to: Kneehill Gas Co-operative Ltd.,  
Kneehill, Alberta.

Attention: Bell & Fenske,  
Consulting Engineering Ltd.,  
5627 21st S.W.,  
Calgary, Alberta.

Subject: Use of Pressure Factor in Gas  
Metering Installations

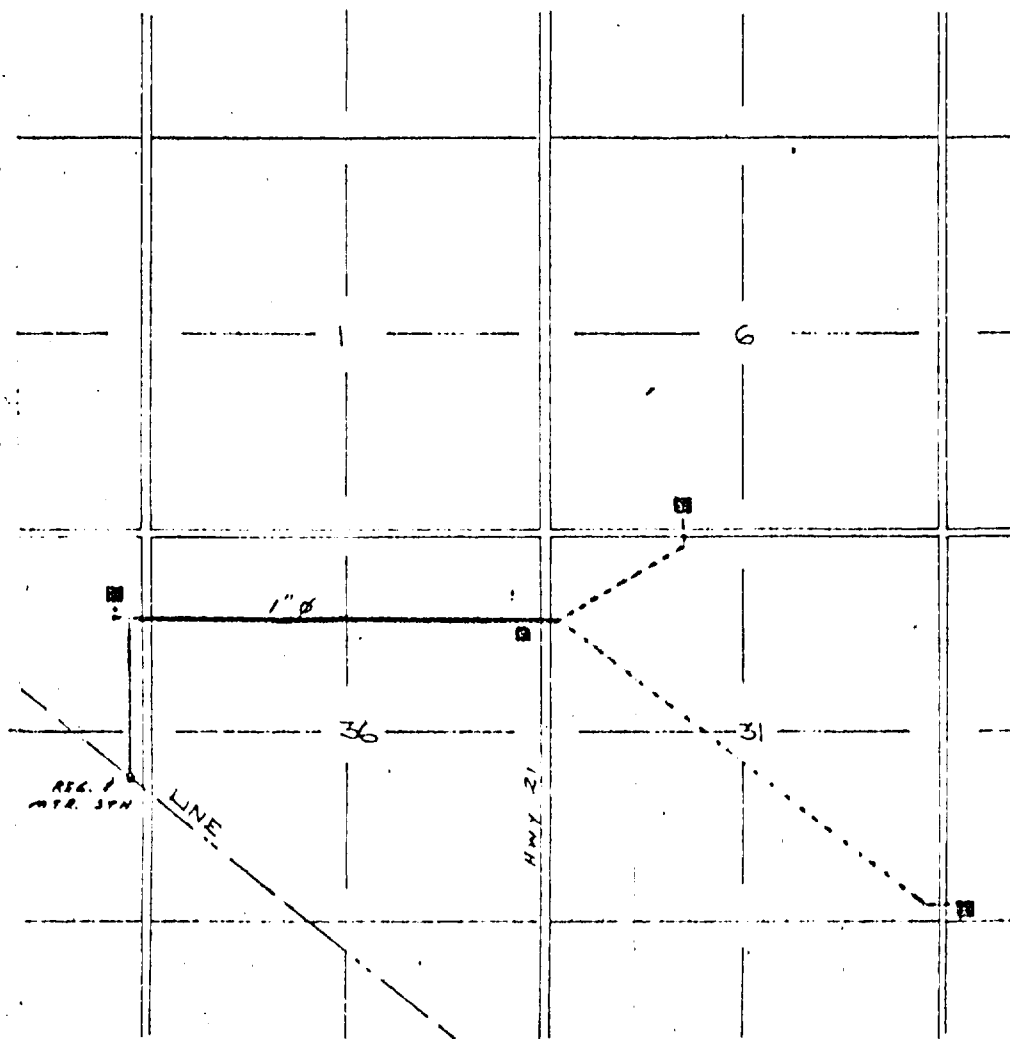
Temporary Special Approval has been granted by the Standards Branch to Kneehill Gas Co-operative Ltd., to use a pressure factor in the measurement of gas at the following installations under the stated conditions:

Location - See Plan BF-M-8-05 attached  
-Load - 900-cfh-approx. (1) 100-cfh approx. (2) 1000-cfh approx.  
Line Pressure (A.G.T.L.) - 900 psig  
Meter Pressure - 25 psig  
Upstream Regulator - 1" Fisher 630 set at 100 psig  
with 1/8" orifice  
Metering Regulator - 1" Fisher 624 set at 25 psig with  
3/32" orifice  
Relief Valve - built into 624 regulator and set at 27 psig  
Meter - Canadian Meter - AL425-TC-25# W.P.  
Elevation A.S.L. - 3,000 feet  
Av. Atmospheric Pressure - 13.25 psia  
Base Pressure - 14.4 psia  
Pressure Correction Factor =  $\frac{13.25 + 25.0}{14.4} = 2.6562$

Changes made by A.M. Park,  
Jan. 1972

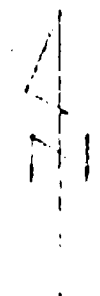


R 23



LEGEND:

- 3/4"  $\phi$  POLYETHYLENE PIPE
- 1"  $\phi$  " " " "



WENSK E.

JCC . LTD.

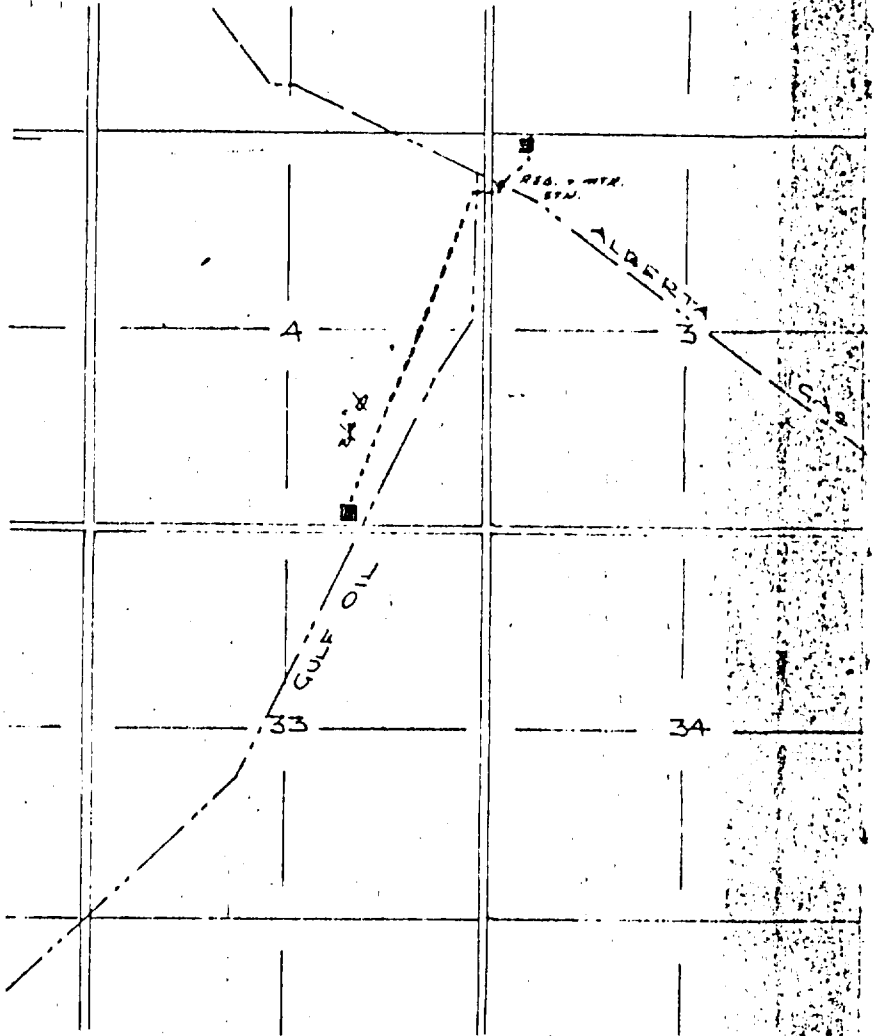
KNEETHE. GAS. DIST. LINE

PROPOSED ADDITION TO  
RURAL NAT'L GAS DISTRIB. SYSTEM



T.P. 30

T.P. 29



THE ALBERTA...  
...  
...  
...  
...  
...  
...  
...  
...  
...

DESIGNED BY: C.F.	DATE: NOV 1971
DRAWN BY: B.S.	
SCALE: 2" = 1 mile	DWG. No. 1 BF-8-M-05



This service may be subject to "spot checks" by the Electricity and Gas Inspection Service at any time with reasonable notice.

*W.J.S. Fraser*

W.J.S. Fraser,  
Chief,  
Electricity and Gas Division.

c.c. Bell & Fenske  
Mr. A. S. Park, Calgary  
Mr. W. A. Sayers, Winnipeg

