



TRADE AND COMMERCE
CANADA

STANDARDS BRANCH

S-GA.181

OTTAWA March 11, 1960.

TYPE APPROVAL

AMERICAN METER COMPANY "TELECOUNTER"

The apparatus specified and illustrated herein has been duly approved by the Standards Branch under the provisions of the Gas Inspection Act, Chap.129, R.S. 1952, and may be admitted to verification in Canada.

Apparatus Approved: The "Telecounter", manufactured by the American Meter Company, Erie, Pa., U.S.A., and distributed in Canada by the Canadian Meter Company Limited, Box 470, Milton, Ontario.

Application: Measurement in distribution service of manufactured, natural, and petroleum gases or mixtures thereof when used in conjunction with an approved device such as a base pressure index, a base volume index, an integrating flowmeter, et cetera.

Rating of Apparatus:	<u>Volts</u>	<u>Amperes</u>
Capacity of mercury contacts in transmitter	24 AC	0.9
	24 DC	0.45
	115 AC	0.3
	115 DC	0.15
	230 AC	0.15
	230 DC	0.07
Supply Voltage for power pack	115 volts, 60 cycles	
Maximum Pulses per hour for remote counter	100	

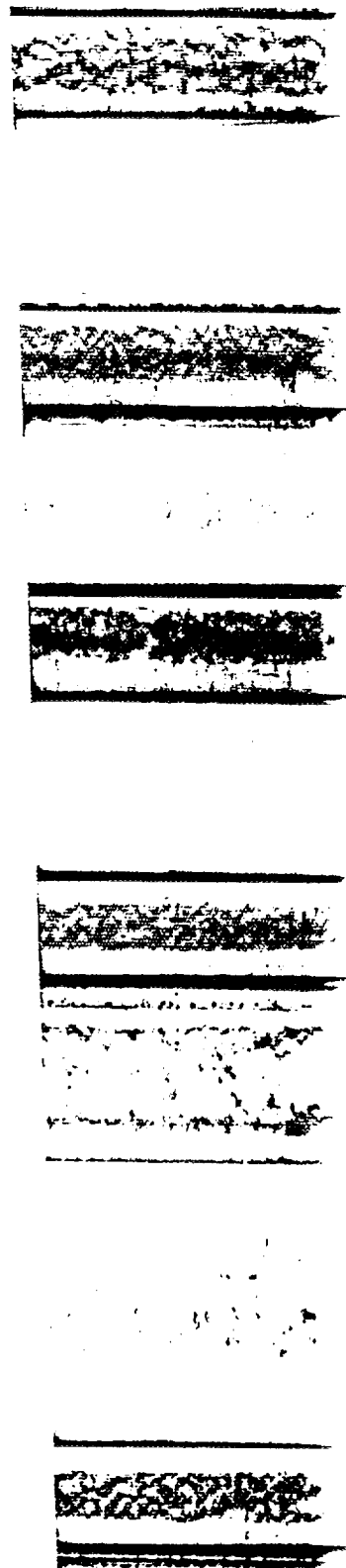
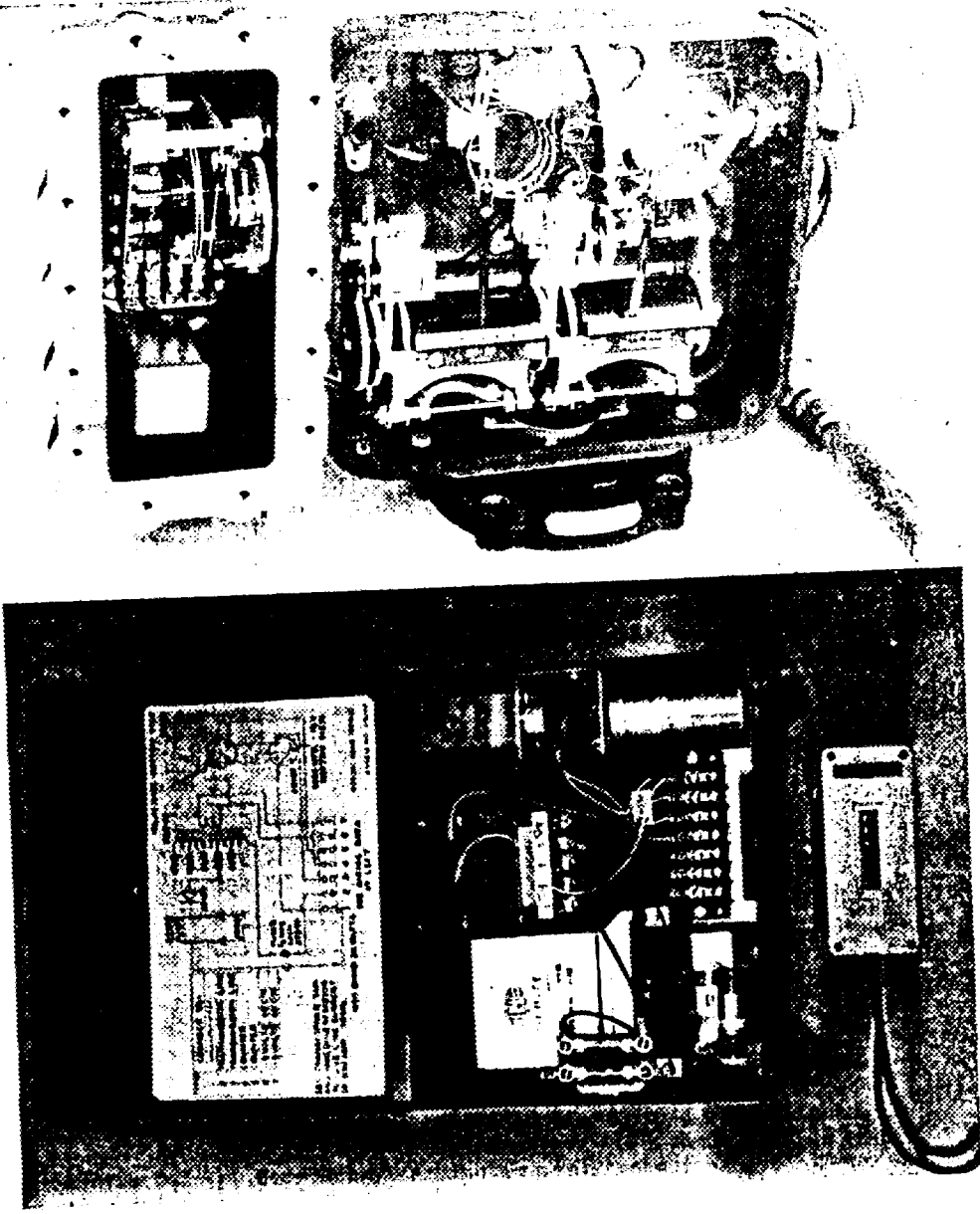
Description: The "Telecounter", when used in conjunction with a base pressure index, base volume index or integrating orifice meter, transmits indications of integrated gas quantities, computed to base pressure and base temperature conditions, to any remote reading location. The system consists of the transmitter, the receiver counter and the power supply unit. Transmission is usually by two-wire telephone line having a maximum allowable loop resistance of 2000 ohms.

For the transmitter, magnetically-operated, sealed mercoid switches are actuated by the motion derived from the mechanical counter in the measuring instrument. These switches open and close interlocking, or lock-in circuits, which include the transmission lines, to actuate the electrical

...../2
(counter)

9-CA.181

AMERICAN METER COMPANY TELECOUNTER WITH BASE VOLUME INDEX



counter at the remote location. Electrical power for these circuits is taken from the commercial power lines and is rectified and filtered by a power pack to provide the 0.03 amperes D.C. required. Provision is made to adjust to the proper value. Suitable protection against chattering of the switches is included.

The remote counter always indicates in the same units as the instrument counter from which the transmitter drive is obtained.

There are three variations of the transmitter element catalogued as follows:-

- Cat.#37028 - Unit for Fast Counter (10 counts per rev. of counter shaft)
- Cat.#37030 - Unit for One to One Counter (1 count per rev. of counter shaft)
- Cat.#37031 - Unit for Slow Counter (1 count per 10 rev. of counter shaft).

The remote counter is a Production Instrument Company Counter, PIC-600, Model 6115A. It may be supplied in the following forms:-

- Cat.#27248 - Surface Mounting Reset Magnetic Counter
- Cat.#27256 - Panel Mounting Reset Magnetic Counter
- Cat.#31335 - Flush Panel Mounting Reset Magnetic Counter
- Cat.#33001 - Box Mounted Mounting Reset Magnetic Counter.

When used for billing purposes the remote counter must be provided with some means for sealing the reset device by the utility.

E. F. Power

E. F. Power,
Assistant Director (E&G),
Standards Branch.

R. W. MacLean
R. W. MacLean,
Director,
Standards Branch.

Ref: A-827

