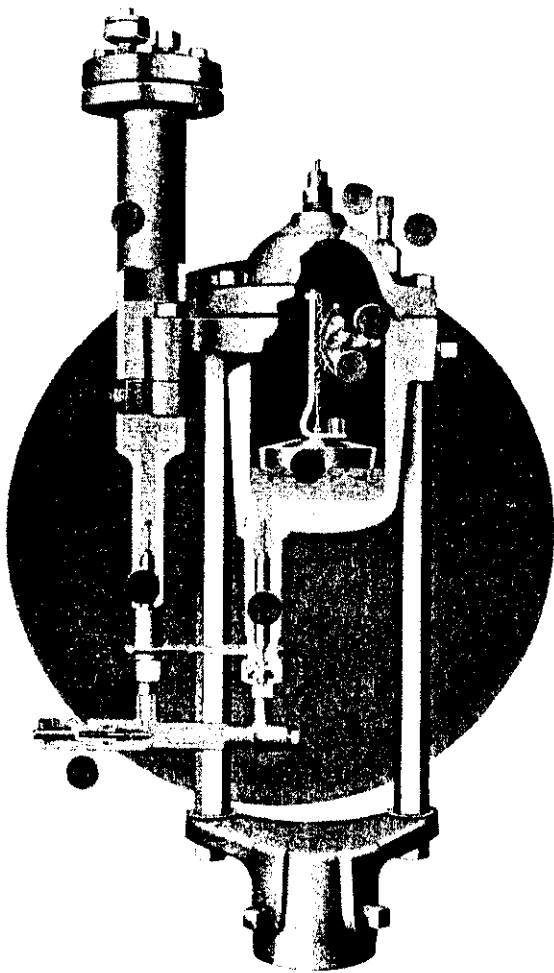


FOXBORO TYPE "17" ORIFICE FLOW METER  
 (Cutaway View of Meter Body, 100" range)



Interchangeable Range Chambers. Range can be changed quickly and easily in the field.

Large float displacement and long travel make this the most powerful differential mechanism available in any orifice meter. Ordinary disturbances have no effect on accuracy.

Positive-acting submerged Check Valves, operating on both buoyancy and velocity, are absolute insurance against loss of mercury. Overrange, sudden fluctuations and flow reversal have no effect on accuracy.

Dirt-proof Bearing Lubricator, with built-in ball check shut-off valve, is externally mounted for accessibility and assures proper and fool-proof bearing lubrication. Single hand adjustment—no special tools required.

Segmental Lever gives positive straight-line motion from float to pen point and eliminates errors of angularity and lost motion.



Fig. 10736 Cutaway view of the Type 17 Meter Body, 100" range. The design of other Foxboro Meter Bodies is essentially the same.

Damping Plug smooths out record produced by pulsating flows. Can be adjusted while the meter is in operation.

Not necessary to disturb piping to clean chambers. Cover is easily removed as pressure connection is to chamber body.

Pressur-Tite Bearing is hand-lapped and lubricant-sealed and eliminates the necessity for a stuffing box. It is positive in its operation and transmits motion with a minimum of friction and without leakage.