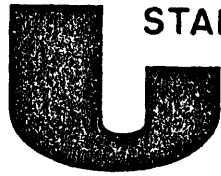




Department of consumer and corporate affairs / Ministère de la consommation et des corporations



STANDARDS BRANCH - DIRECTION DES NORMES

## NOTICE OF APPROVAL

G-72-1

OTTAWA August 18, 1971.

### ROCKWELL, CLOCK AND COUNTER TYPE REGISTERS

This notice supersedes Circular G-72, dated January 25, 1971 and similarly it consolidates previously approved metal, clock-type and metal-plastic counter-type registers that are now commonly supplied with approved gas meters, manufactured by the Rockwell Manufacturing Company of Canada Ltd.

It also extends coverage to the new, all-plastic registers recently introduced by the manufacturer.

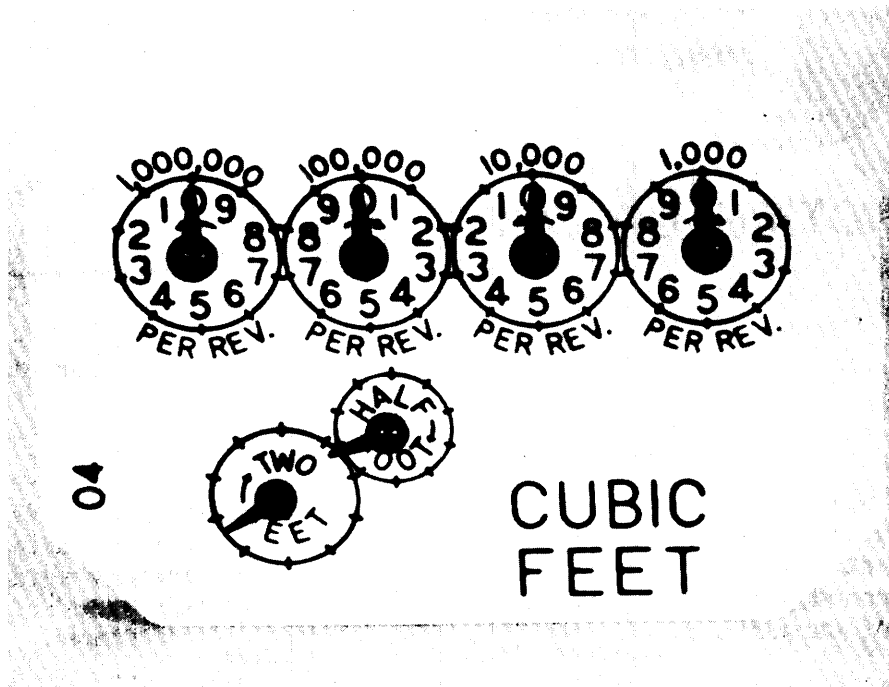
#### Description

Approval Circulars for various gas meters include illustrations which show registers attached to the meters. Table I, attached to this circular, lists various registers and their intended use, and this information may serve as a reference in identifying approved registers.

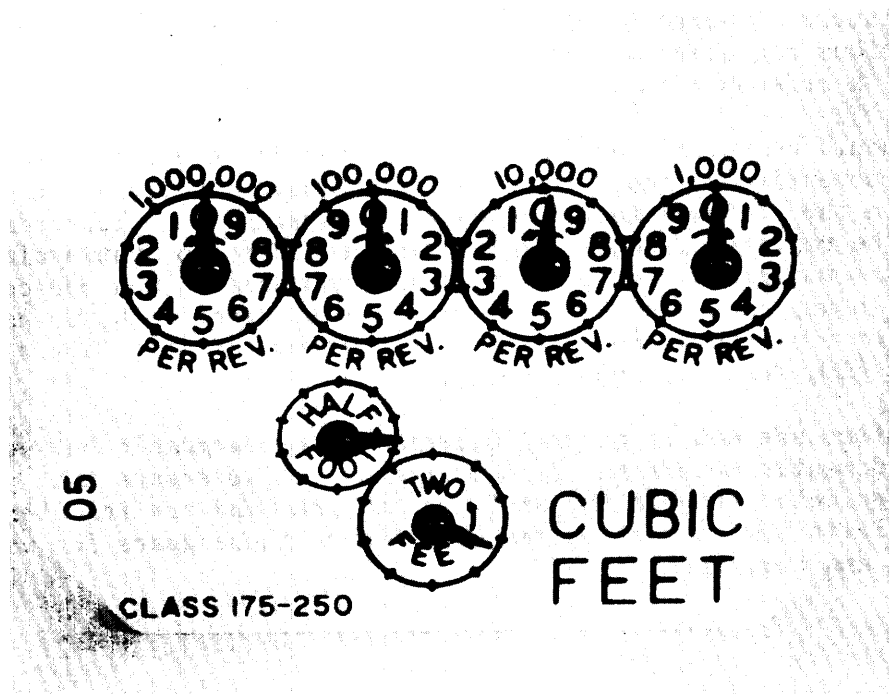
It should be noted that registers #54 and #55 are identical to #44 and #45 respectively except that the former have a temperature compensation marking on the register face. Since such marking is no longer a requirement on the register face, it is not now necessary to distinguish by number between the registers used on temperature-compensated and non-compensated meters. In any case the manufacturer intends, henceforth, to use either the #04 or #05 plastic registers on all meters formerly fitted with the metal registers #20, #44, #45, #54 and #55.

Registers are not in general directly interchangeable between various sizes of domestic meters and care must be taken to ensure that proper gear ratio is selected between the stuffing box gear and the register drive gear. Table II lists the correct number of teeth on these gears for various types of meters and registers.

ROCKWELL CLOCK AND COUNTER TYPE REGISTERS



04 Plastic Registers for Domestic Meters



05 Plastic Registers for Domestic Meters

Plastic registers, illustrated herein, are made completely of moulded plastic material with front and back plates made of DuPont Acrylic No. 140-WT-55 Lucite and pinions and gears from DuPont Delrin material.

The counter-type registers Nos. 60 and 78 are described and illustrated in the approval circular No. G-37-1 which covers Type RC-175 gas meter. Present approval permits the use of these registers on other domestic meters, as listed in Table I.

Larger capacity meters may be equipped with either vertically or horizontally positioned registers, as shown on the illustrations.

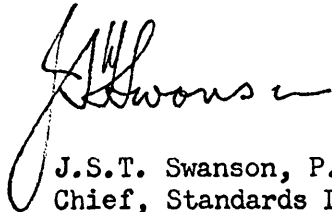
It must be emphasized however, that larger capacity meters are usually operating on pressures greater than about seven ounces per square inch and would therefore require appropriate volume correcting devices. Standard registers listed herein are not presently approved for use on meters when operating pressure exceeds about seven ounces per square inch unless an approved auxiliary device is fitted to the meter.

Each register shall have the units of measurement, CUBIC FEET, clearly marked on its dial face. On clock-type registers, the magnitude of a complete revolution of each dial shall be marked above or below the dial. On counter-type registers, no figures shall be marked above or below the dials, but an appropriate number of zeros shall follow the lowest reading dial.


This approval does not cover registers used in volume correcting devices. Pertinent approval circulars describe approved registers for such instruments.

Approval granted to:

Rockwell Manufacturing Company of Canada Ltd.,  
Guelph,  
Ontario.



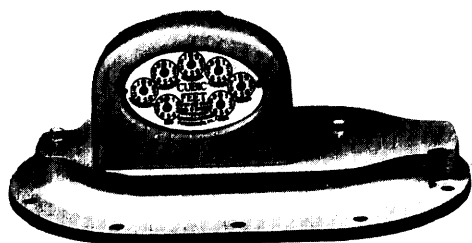
J.S.T. Swanson, P. Eng.,  
Chief, Standards Laboratory,  
Standards Branch.



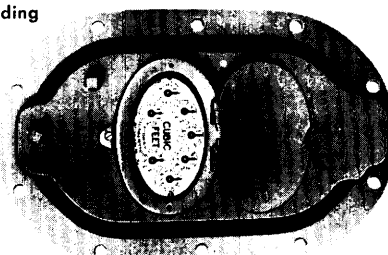
W.J.S. Fraser,  
Chief, Electricity and Gas Division,  
Standards Branch.

Ref: SL-100-129 and 129B

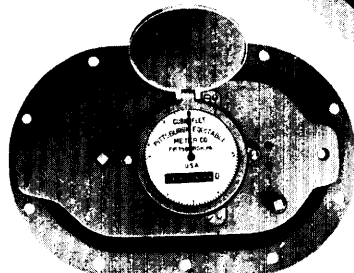
ROCKWELL CLOCK AND COUNTER TYPE REGISTERS



Vertical, Circular Reading



Horizontal, Circular Reading



Horizontal, Direct Reading

Registers for Larger Capacity Meters

**TABLE II.**  
ROCKWELL REGISTERS FOR DOMESTIC GAS METERS

REGISTER DESIGNATION		Nos. of DIALS OR DIGITS	TEST DIAL ROTATION	TEST DIAL CAPACITY IN CU.FT.	INDEX GEAR	STUFF. BOX GEAR	INDEX GEAR	STUFF. BOX GEAR	INDEX GEAR	STUFF. BOX GEAR	TYPE OF METERS ←	
78	5 DIGITS	C. W.	1	18	18	12	24	12	24	12	24	LPG, RC 175
<u>COUNTER-TYPE</u> 60	4 DIGITS	C. W.	1	18	18	12	24	12	24	12	24	
20	4	C. W.	2	24	24	12	24	11	11	11	18	415
05	4	C. C. W.	2 and 1/2	24	24	12	24	11	11	11	18	
04	4	C. W.	2 and 1/2	24	24	12	24	11	11	11	18	
55 T.C.	4	C. C. W.	2 and 1/2	24	24	12	24	11	11	11	18	
54 T.C.	4	C. W.	2 and 1/2	24	24	12	24	11	11	11	18	
45	4	C. C. W.	2 and 1/2	24	24	12	24	11	11	11	18	
<u>CLOCK-TYPE</u> 44	4	C. W.	2 and 1/2	24	24	12	24	11	11	11	18	

**TABLE I.  
ROCKWELL REGISTERS - INFORMATION DATA**

TYPE OF REGISTER	READING POSITION	SHAPE OF DIAL FACE	MATERIAL	NO. OF DIALS	TEST CU. FT.	MAXIMUM CAPACITY CU. FT.	COMPANY REFERENCE No.	SUITABLE FOR USE WITH FOLLOWING METERS
CLOCK	VERTICAL	RECTANGUL.	PLASTIC	4	2, 1/2	1,000,000	04 and 05	LP, RC 175, RC 225, 250, 310, 415
"	"	"	METAL	4	2	"	20	"
"	"	"	"	4	"	"	54 *	"
"	"	"	"	4	"	"	55 *	"
"	"	"	"	4	"	"	44	"
"	"	"	"	4	"	"	45	"
COUNTER	"	"	"	4 DIG.	1	"	60	"
"	"	"	"	5 DIG.	1	"	78	"
CLOCK	"	OVAL	"	5	5	10,000,000	011-14-537-00	* 750, 1600
"	"	"	"	6	6	10	005-68-537-00	* 2 1/2, 3, 4, 4 1/2, 3000, 5000
"	HORIZONTAL	"	"	6	"	"	002-65-537-00	"
COUNTER	"	CIRCULAR	"	6 DIG.	"	"	022-67-575-00	* 750, 1600, 2 1/2, 3, 4, 4 1/2, R3, R5
"	"	"	"	6 DIG.	100	100,000,000	055-69-575-00	* 5, 10,000, R8, R11, 6" TURBO
"	"	"	"	6 DIG.	1,000	1,000,000,000	066-26-575-00	* 8 and 10" TURBO
CLOCK	VERTICAL	OVAL	"	6	100	100,000,000	055-69-537-00	* 5, 10,000 and 6" TURBO
"	"	"	"	6	1,000	1,000,000,000	006-26-537-00	* 8 and 10" TURBO
"	"	"	"	7	10	10,000,000	005-68-537-00	* 2 1/2, 3, 4, 4 1/2, 750, 1600, 3000, 5000, R3, R5
"	"	"	"	6	10, 100	100,000,000	005-68-537-03	"
"	"	"	"	5	10	10,000,000	005-68-537-15	"
"	"	"	"	7	100	100,000,000	005-69-537-00	* 5, 10,000, 6" TURBO, R8, R11
"	"	"	"	6	"	"	005-69-537-08	"

NOTE ONLY DOMESTIC SIZE GAS METERS ARE MARKED (IN FRONT) WITH REFERENCE NUMBER. \* These registers were used on I.C. meters and are no longer required (See text).