



Measurement Canada
An agency of Industry Canada

Mesures Canada
Un organisme d'Industrie Canada

MAL No. - N° De LAM
MAL-G54

Date: June 1, 1999

File number: AP-AG-98-0076

MODIFICATION ACCEPTANCE LETTER (MAL) FOR Approved Meters and Devices

Type of Device

Gas Diaphragm and Turbine Meter

Purpose

The purpose of this letter is to convey details of modifications to meters which have previously received approval of type recognition from Measurement Canada. These modifications have been evaluated by the Approval Services Laboratory in accordance with national requirements and shall be considered to be included within the scope of the originally issued Notices of Approval specified in this document and any subsequent revisions to these Notices of Approval.

Scope

The modifications described in this letter affect meters identified in the following Notice(s) of Approval:

Approval Number

G-0033, G-0060, G-0094, G-0098, G-0101, G-0138, G-0145, S-GA.173, S-GA.289, AG-0263

Applicant

Equimeter Incorporated
805 Liberty Boulevard
P.O. Box 528
DuBois, PA
15801

Description of Modifications

The registers identified by the following table can be installed on the meters approved under the above noted Notices of Approval.

Randy Byrtus
Approvals Technical Coordinator
Fluid Measurement Discipline



Measurement Canada
An agency of Industry Canada

Mesures Canada
Un organisme d'Industrie Canada

MAL No. - N° De LAM
MAL-G54

Date: 1 juin 1999
Dossier: AP-AG-98-0076

LETTRE D'ACCEPTATION DE MODIFICATION (LAM) pour Compteurs et appareils approuvés

Type d'appareil

Objet

La présente lettre vise à expliquer les détails des modifications apportées aux compteurs dont le type a déjà été approuvé par Mesures Canada. Ces modifications ont été évaluées par le Laboratoire des services d'approbation en conformité aux exigences nationales et doivent être considérées comme faisant partie de la portée des avis d'approbation d'origine énumérés dans le présent document et de toutes leurs révisions subséquentes.

Portée

Les modifications décrites dans la présente lettre s'appliquent aux compteurs visés par l'avis d'approbation suivant:

Numéro d'approbation

G-0033, G-0060, G-0094, G-0098, G-0101, G-0138, G-0145, S-GA.173, S-GA.289, AG-0263

Requérant

Equimeter Incorporated
805 Liberty Boulevard
P.O. Box 528
DuBois, PA
15801

Description des modifications

Les enregistreurs identifiés dans le tableau suivant peuvent être installés sur les compteurs approuvés en vertu des avis d'approbation identifiés ci-dessus.

Randy Byrtus
Coordonnateur en technologie, approbations
Mesure des fluides

The registers identified below are approved for use with the above mentioned Notice of Approvals.
Les enregistreurs identifiés ci-dessous sont approuvés pour utilisation avec les appareils figurant dans les avis d'approbation mentionnés ci-dessus.

The following information pertains to the various size turbo-meters and diaphragm meters that use the 8 wheel VDR index.

Les renseignements suivants se rapportent aux compteurs à turbine et aux compteurs à membrane de diverses capacités qui utilisent l'indicateur VDR à 8 roues.

Intermediate Capacity Diaphragm Meters (RC-750, RC-M-750, Rockwell # 1000, RC-1600, and RC-M-1600) can feature a 5 ft³, 10 ft³ or 0.1m³ output. They can accept the following index assemblies:

Les compteurs à membrane de capacité moyenne (RC-750, RC-M-750, Rockwell n° 1000, RC-1600 et RC-M-1600) peuvent posséder une sortie de 5 pi³, 10 pi³ ou 0.1 m³. Ils peuvent accepter les ensembles indicateurs suivants:

01114-639-49	01114-639-40	01114-639-48	01114-639-64
01114-639-46	01114-639-47	01114-639-45	01114-639-41
01114-639-62	01114-639-67	01114-639-36	01114-639-00
01114-639-63	01114-639-68	01114-639-01	01114-639-60
01114-639-65	01114-639-08	01114-639-04	01114-639-61
01114-639-66	01114-639-11	01114-639-69	01114-639-56
01114-639-77	01114-639-74	01114-639-58	01114-639-59

RC-3000 and RC-M-3000 Large Capacity Diaphragm Meter can feature a 10 ft³ or 0.1 m³ output. It can accept the following index assemblies:

Les compteurs à membrane de grande capacité RC-3000 et RC-M-3000 peuvent posséder une sortie de 10 pi³ ou 0.1 m³. Ils peuvent accepter les ensembles indicateurs suivants:

01114-639-46	01114-639-47	01114-639-45	01114-639-41
01114-639-62	01114-639-67	01114-639-36	01114-639-01
01114-639-60	01114-639-65	01114-639-08	01114-639-04
01114-639-61	01114-639-66	01114-639-11	01114-639-69
01114-639-56	01114-639-77	01114-639-74	01114-639-59
01114-639-58			

Rockwell # 5000 Large Capacity Diaphragm Meter can feature a 10 ft³, 0.1 m³ or 1.0 m³ output. It can accept the following index assemblies:

Le compteur à membrane de grande capacité Rockwell n° 5000 peut posséder une sortie de 10 pi³, 0.1 m³ ou 1.0 m³. Il peut accepter les ensembles indicateurs suivants:

01114-639-46	01114-639-47	01114-639-45	01114-639-41
01114-639-62	01114-639-67	01114-639-36	01114-639-01
01114-639-60	01114-639-65	01114-639-08	01114-639-04
01114-639-61	01114-639-66	01114-639-11	01114-639-69
01114-639-56	01114-639-77	01114-639-74	01114-639-59
01114-639-58	01114-639-42	00222-639-63	00222-639-66
01114-639-35	01114-639-05	00222-639-61	00222-639-65
01114-639-12	01114-639-70	01114-639-57	01114-639-78
01114-639-75			

Rockwell # 10000 Large Capacity Diaphragm Meter can feature a 10 ft³, 100 ft³ or 1.0 m³ output. It can accept the following index assemblies:

Le compteur à membrane de grande capacité Rockwell n° 10000 peut posséder une sortie de 10 pi³, 100 pi³ ou 1.0 m³. Il peut accepter les ensembles indicateurs suivants:

01114-639-46	01114-639-47	01114-639-45	01114-639-51
01114-639-55	01114-639-43	00222-639-62	01114-639-50
01114-639-42	00222-639-63	00222-639-66	01114-639-35
01114-639-01	01114-639-60	01114-639-65	01114-639-08
01114-639-02	00222-639-60	00222-639-64	01114-639-09
01114-639-05	00222-639-61	00222-639-65	01114-639-12
01114-639-70	01114-639-57	01114-639-78	01114-639-75

Mark II Series "G", TPL-9, RCM-TPL-9 and AAT (Auto-Adjust Turbine meter) series (2", 3", 4" and 6") can feature a 10 ft³, 100 ft³, 1.0 m³ or 10.0 m³ output. They can accept the following index assemblies:

Les compteurs Mark II de série «G», TPL-9, RCM-TPL-9 et de série AAT (compteur à turbine Auto-Adjust) (2 po, 3 po, 4 po et 6 po) peuvent posséder une sortie de 10 pi³, 100 pi³, 1.0 m³ ou 10.0 m³. Ils peuvent accepter les ensembles indicateurs suivants:

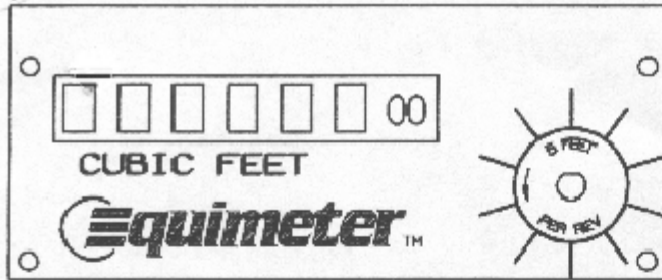
01114-639-46	01114-639-47	01114-639-45	01114-639-51
01114-639-55	01114-639-43	00222-639-62	01114-639-50
01114-639-42	00222-639-63	00222-639-66	01114-639-35
01114-639-01	01114-639-60	01114-639-65	01114-639-08
01114-639-02	00222-639-60	00222-639-64	01114-639-09
01114-639-05	00222-639-61	00222-639-65	01114-639-12
01114-639-70	01114-639-57	01114-639-78	01114-639-75
01114-639-06	00626-639-61	00626-639-64	01114-639-13
1114-639-79	01114-639-76		

Mark II Series "G", and AAT II Series and AAT (Auto-Adjust Turbine meter) series (8" and 12") can feature a 100 ft³, 1000 ft³ or 10.0 m³ output. They can accept the following index assemblies:

Les compteurs Mark II de série «G» et de série AAT (compteur à turbine Auto-Adjust) (8 po et 12 po) peuvent posséder une sortie de 100 pi³, 1000 pi³ ou 10.0 m³. Ils peuvent accepter les ensembles indicateurs suivants:

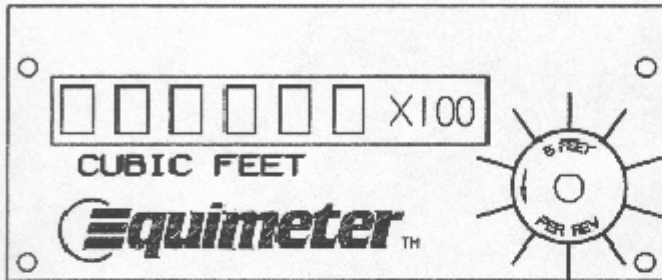
01114-639-51	01114-639-55	01114-639-44	00626-639-62
01114-639-52	01114-639-43	00222-639-62	01114-639-50
01114-639-02	00222-639-60	00222-639-64	01114-639-09
01114-639-03	00626-639-60	00626-639-63	01114-639-10
01114-639-06	00626-639-61	00626-639-64	01114-639-13
1114-639-79	01114-639-76		

The above listed indexes are made from 22 different dial face plates referenced on the attached drawings. Les indicateurs énumérés ci-dessus sont faits de 22 plaques-indicateurs avant différentes dont il est fait référence sur les dessins ci-joints.



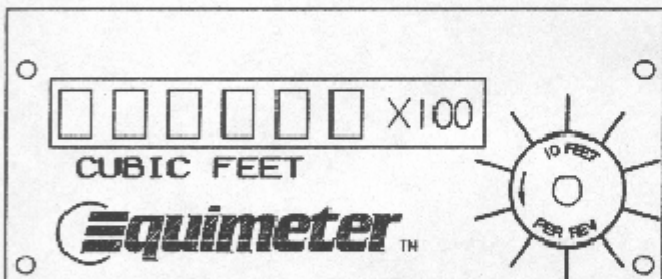
DIAL PLATE 5 FT3
 PT. NO. 01114-039-32

AVAILABLE IN THE FOLLOWING INDEXES:
 -5 FT3 INDEX ASSEMBLY (PHIL. GAS)
 FOR USE IN LEXAN BOX.
 PT. NO. 01114-639-49



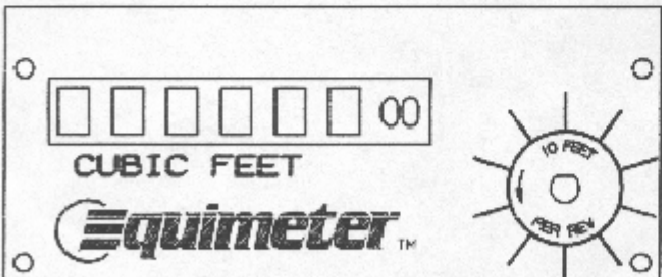
DIAL PLATE 5 FT3
 PT. NO. 01114-039-33

AVAILABLE IN THE FOLLOWING INDEXES:
 -5 FT3 INDEX ASSEMBLY (CON-ED)
 FOR USE IN LEXAN BOX.
 PT. NO. 01114-639-40
 -5 FT3 INDEX ASSEMBLY W/O ELEC. CONN.
 FOR USE IN ALUMINUM BOX.
 PT. NO. 01114-639-48
 -5 FT3 INDEX ASSEMBLY W/ 1 VANE CHOPPER
 FOR USE IN ALUM. BOX W/ELEC. CONN.
 PT. NO. 01114-639-64



DIAL PLATE 10 FT3
 PT. NO. 01114-039-44

AVAILABLE IN THE FOLLOWING INDEXES:
 -10 FT3 INDEX ASSEMBLY (CON-ED)
 FOR USE IN LEXAN BOX.
 PT. NO. 01114-639-46
 -10 FT3 INDEX ASSEMBLY W/O ELEC. CONN.
 FOR USE IN ALUMINUM BOX.
 PT. NO. 01114-639-47



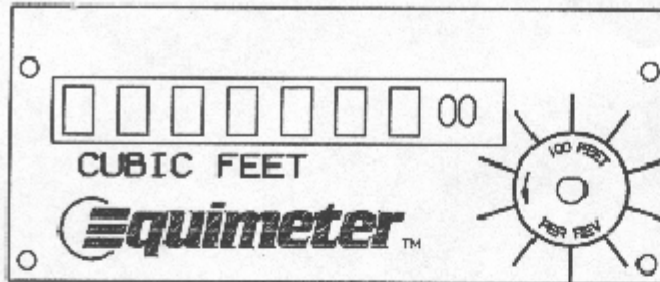
DIAL PLATE 10 FT3
 PT. NO. 01114-039-46

AVAILABLE IN THE FOLLOWING INDEXES:
 -10 FT3 INDEX ASSEMBLY (PHIL. GAS)
 FOR USE IN LEXAN BOX.
 PT. NO. 01114-639-45

NOTE:
 FOR COMPLETE INDEX AND ALUMINUM BOX
 ASSEMBLIES SEE MM-1841-B1, -B3
 FOR INDEX AND LEXAN BOX MOUNTING
 SEE MM-1840-B

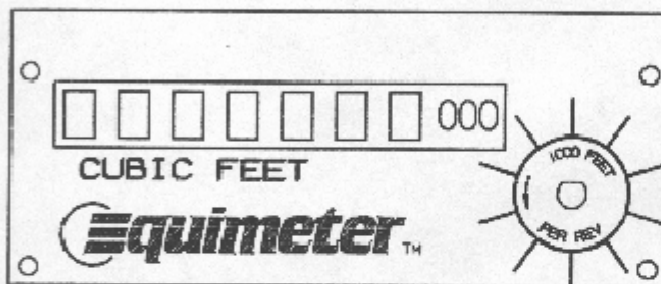
SHEET 1 OF 7.

REV.	DATE	 INCORPORATED 805 Liberty Blvd. DuBois, PA 15801 A BTR Company	
		INDUSTRIAL METER 8 WHEEL VDR INDEX	
		DIAL FACES WITH 6 OPEN WINDOWS	
		DR. BY: MJZ	MM-1842-B1
		DATE: 01-13-98	



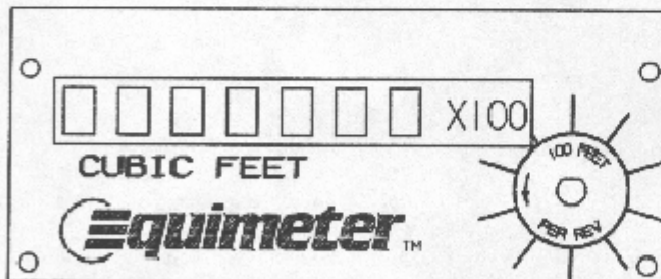
DIAL PLATE 100 FT3
 PT. NO. 01114-039-45

AVAILABLE IN THE FOLLOWING INDEXES:
 -100 FT3 INDEX ASSEMBLY (NY GAS)
 FOR USE IN LEXAN BOX.
 PT. NO. 01114-639-51
 -100 FT3 INDEX ASSEMBLY (NY GAS)
 FOR USE IN ALUMINUM BOX.
 PT. NO. 01114-639-55



DIAL PLATE 1000 FT3
 PT. NO. 01114-039-34

AVAILABLE IN THE FOLLOWING INDEXES:
 -1000 FT3 INDEX ASSEMBLY (CON-ED)
 FOR USE IN LEXAN BOX.
 PT. NO. 01114-639-44
 -1000 FT3 INDEX ASSEMBLY (CON-ED)
 WITH 1 VANE CHOPPER
 FOR USE IN ALUM. BOX W/ELEC. CONN.
 PT. NO. 00626-639-62
 -1000 FT3 INDEX ASSEMBLY (CON-ED)
 FOR USE IN ALUM. BOX W/O ELEC. CONN.
 PT. NO. 01114-639-52



DIAL PLATE 100 FT3
 PT. NO. 01114-039-34

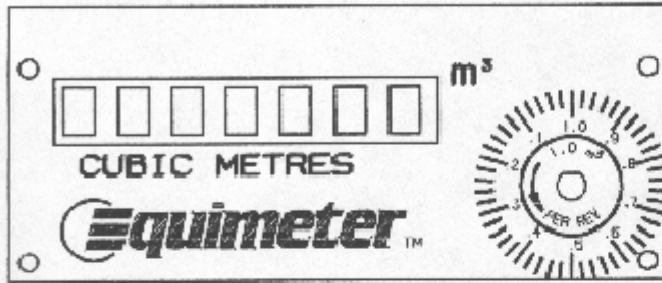
AVAILABLE IN THE FOLLOWING INDEXES:
 -100 FT3 INDEX ASSEMBLY (CON-ED)
 FOR USE IN LEXAN BOX.
 PT. NO. 01114-639-43
 -100 FT3 INDEX ASSEMBLY (CON-ED)
 WITH 1 VANE CHOPPER
 FOR USE IN ALUM. BOX W/ELEC. CONN.
 PT. NO. 00222-639-62
 -100 FT3 INDEX ASSEMBLY (CON-ED)
 FOR USE IN ALUM. BOX W/O ELEC. CONN.
 PT. NO. 01114-639-50

NOTE:
 FOR COMPLETE INDEX AND ALUMINUM BOX
 ASSEMBLIES SEE MM-1841-B1, -B3

FOR INDEX AND LEXAN BOX MOUNTING
 SEE MM-1840-B

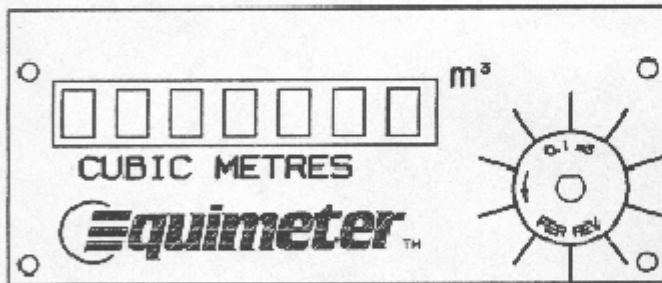
SHEET 2 OF 7.

REV.	DATE	 INCORPORATED 805 Liberty Blvd., DuBois, PA 15801 A BTR Company
		DIAL FACES WITH 7 OPEN WINDOWS
		DR. BY: MJZ
		DATE: 01-13-98
		MM-1842-B2



DIAL PLATE 1.0 M3
 PT. NO. 01114-039-39

- AVAILABLE IN THE FOLLOWING INDEXES:
- 1.0 M3 INDEX ASSEMBLY (CANADA)
 FOR USE IN LEXAN BOX.
 PT. NO. 01114-639-42
 - 1.0 M3 INDEX ASSEMBLY (CANADA)
 WITH 1 VANE CHOPPER
 FOR USE IN ALUM. BOX W/ELEC. CONN.
 PT. NO. 00222-639-63
 - 1.0 M3 INDEX ASSEMBLY (CANADA)
 WITH 10 VANE CHOPPER
 FOR USE IN ALUM. BOX W/ELEC. CONN.
 PT. NO. 00222-639-66
 - 1.0 M3 INDEX ASSEMBLY (CANADA)
 FOR USE IN ALUM. BOX W/O ELEC. CONN.
 PT. NO. 01114-639-35

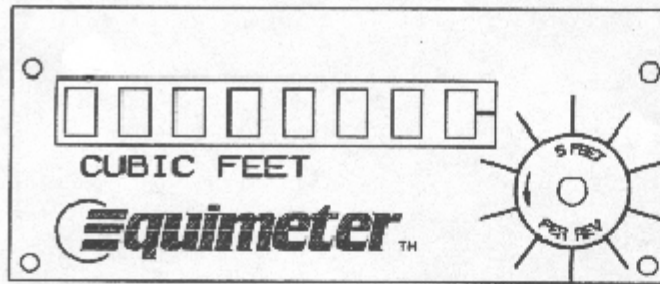


DIAL PLATE 0.1 M3
 PT. NO. 01114-039-30

- AVAILABLE IN THE FOLLOWING INDEXES:
- 0.1 M3 INDEX ASSEMBLY (CANADA)
 FOR USE IN LEXAN BOX.
 PT. NO. 01114-639-41
 - 0.1 M3 INDEX ASSEMBLY (CANADA)
 WITH 1 VANE CHOPPER
 FOR USE IN ALUM. BOX W/ELEC. CONN.
 PT. NO. 01114-639-62
 - 0.1 M3 INDEX ASSEMBLY (CANADA)
 WITH 10 VANE CHOPPER
 FOR USE IN ALUM. BOX W/ELEC. CONN.
 PT. NO. 01114-639-67
 - 0.1 M3 INDEX ASSEMBLY (CANADA)
 FOR USE IN ALUM. BOX W/O ELEC. CONN.
 PT. NO. 01114-639-36

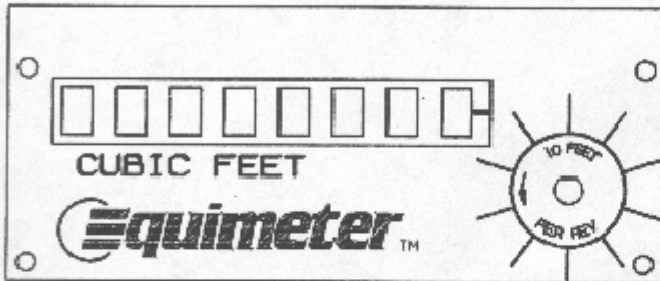
NOTE:
 FOR COMPLETE INDEX AND ALUMINUM BOX
 ASSEMBLIES SEE MM-1841-B1, -B3
 FOR INDEX AND LEXAN BOX MOUNTING
 SEE MM-1840-B

REV.	DATE	 INCORPORATED 805 Liberty Blvd. DuBois, PA 15801 A BTR Company
		DIAL FACES WITH 7 OPEN WINDOWS
		DR. BY: MJZ
		DATE: 01-13-98
		MM-1842-B3



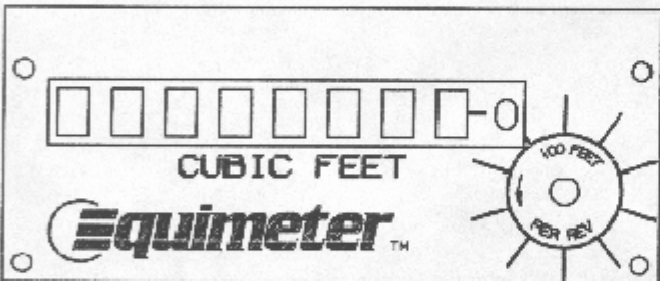
DIAL PLATE 5 FT3
 PT. NO. 01114-039-31

- AVAILABLE IN THE FOLLOWING INDEXES:
- 5 FT3 INDEX ASSEMBLY FOR USE IN LEXAN BOX. PT. NO. 01114-639-00
 - 5 FT3 INDEX ASSEMBLY WITH 1 VANE CHOPPER FOR USE IN ALUM. BOX W/ELEC. CONN. PT. NO. 01114-639-63
 - 5 FT3 INDEX ASSEMBLY WITH 5 VANE CHOPPER FOR USE IN ALUM. BOX W/ELEC. CONN. PT. NO. 01114-639-68



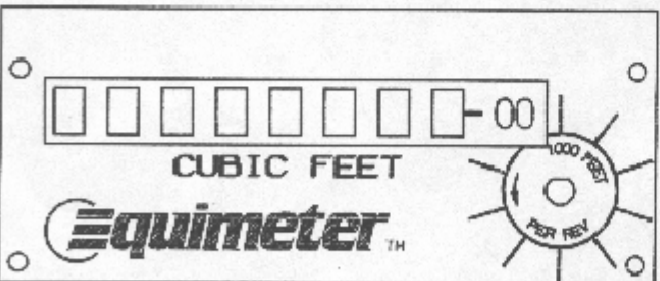
DIAL PLATE 10 FT3
 PT. NO. 01114-039-36

- AVAILABLE IN THE FOLLOWING INDEXES:
- 10 FT3 INDEX ASSEMBLY FOR USE IN LEXAN BOX. PT. NO. 01114-639-01
 - 10 FT3 INDEX ASSEMBLY WITH 1 VANE CHOPPER FOR USE IN ALUM. BOX W/ELEC. CONN. PT. NO. 01114-639-60
 - 10 FT3 INDEX ASSEMBLY WITH 10 VANE CHOPPER FOR USE IN ALUM. BOX W/ELEC. CONN. PT. NO. 01114-639-65
 - 10 FT3 INDEX ASSEMBLY FOR USE IN ALUM. BOX W/O ELEC. CONN. PT. NO. 01114-639-08



DIAL PLATE 100 FT3
 PT. NO. 01114-039-37

- AVAILABLE IN THE FOLLOWING INDEXES:
- 100 FT3 INDEX ASSEMBLY FOR USE IN LEXAN BOX. PT. NO. 01114-639-02
 - 100 FT3 INDEX ASSEMBLY WITH 1 VANE CHOPPER FOR USE IN ALUM. BOX W/ELEC. CONN. PT. NO. 00222-639-60
 - 100 FT3 INDEX ASSEMBLY WITH 10 VANE CHOPPER FOR USE IN ALUM. BOX W/ELEC. CONN. PT. NO. 00222-639-64
 - 100 FT3 INDEX ASSEMBLY FOR USE IN ALUM. BOX W/O ELEC. CONN. PT. NO. 01114-639-09



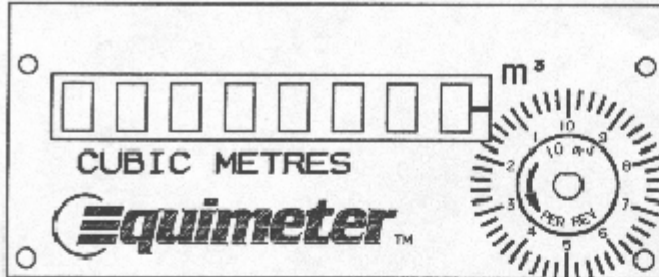
DIAL PLATE 1000 FT3
 PT. NO. 01114-039-38

- AVAILABLE IN THE FOLLOWING INDEXES:
- 1000 FT3 INDEX ASSEMBLY FOR USE IN LEXAN BOX. PT. NO. 01114-639-03
 - 1000 FT3 INDEX ASSEMBLY WITH 1 VANE CHOPPER FOR USE IN ALUM. BOX W/ELEC. CONN. PT. NO. 00626-639-60
 - 1000 FT3 INDEX ASSEMBLY WITH 10 VANE CHOPPER FOR USE IN ALUM. BOX W/ELEC. CONN. PT. NO. 00626-639-63
 - 1000 FT3 INDEX ASSEMBLY FOR USE IN ALUM. BOX W/O ELEC. CONN. PT. NO. 01114-639-10

NOTE:
 FOR COMPLETE INDEX AND ALUMINUM BOX ASSEMBLIES SEE MM-1841-81, -83
 FOR INDEX AND LEXAN BOX MOUNTING SEE MM-1840-B

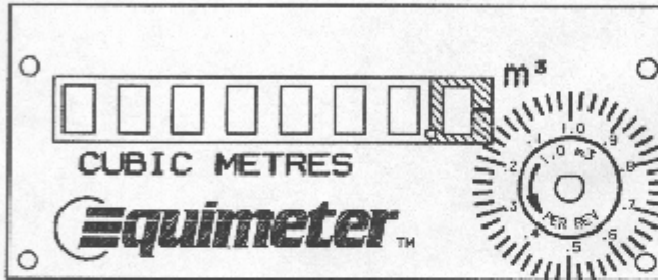
SHEET 4 OF 7.

REV.	DATE	 INCORPORATED 805 Liberty Blvd. DuBois, PA 15801 A BTR Company
		DIAL FACES WITH 8 OPEN WINDOWS
		DR. BY: MJZ
		DATE: 01-13-98
		MM-1842-B4



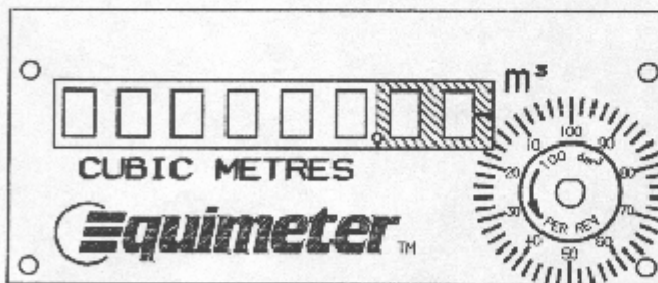
DIAL PLATE 10.0 M3
 PT. NO. 01114-039-43

- AVAILABLE IN THE FOLLOWING INDEXES:
- 10.0 M3 INDEX ASSEMBLY FOR USE IN LEXAN BOX. PT. NO. 01114-639-06
 - 10.0 M3 INDEX ASSEMBLY WITH 1 VANE CHOPPER FOR USE IN ALUM. BOX W/ELEC. CONN. PT. NO. 00626-639-61
 - 10.0 M3 INDEX ASSEMBLY WITH 10 VANE CHOPPER FOR USE IN ALUM. BOX W/ELEC. CONN. PT. NO. 00626-639-64
 - 10.0 M3 INDEX ASSEMBLY FOR USE IN ALUM. BOX W/O ELEC. CONN. PT. NO. 01114-639-13



DIAL PLATE 1.0 M3
 PT. NO. 01114-039-42

- AVAILABLE IN THE FOLLOWING INDEXES:
- 1.0 M3 INDEX ASSEMBLY FOR USE IN LEXAN BOX. PT. NO. 01114-639-05
 - 1.0 M3 INDEX ASSEMBLY WITH 1 VANE CHOPPER FOR USE IN ALUM. BOX W/ELEC. CONN. PT. NO. 00222-639-61
 - 1.0 M3 INDEX ASSEMBLY WITH 10 VANE CHOPPER FOR USE IN ALUM. BOX W/ELEC. CONN. PT. NO. 00222-639-65
 - 1.0 M3 INDEX ASSEMBLY FOR USE IN ALUM. BOX W/O ELEC. CONN. PT. NO. 01114-639-12



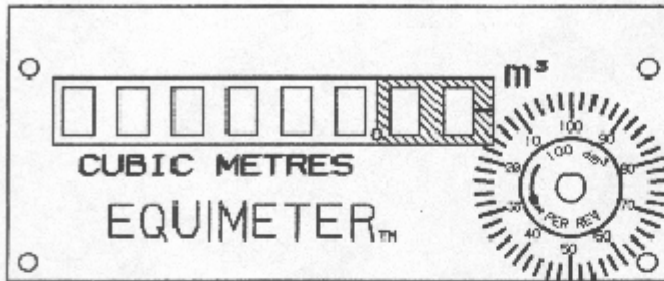
DIAL PLATE 0.1 M3
 PT. NO. 01114-039-41

- AVAILABLE IN THE FOLLOWING INDEXES:
- 0.1 M3 INDEX ASSEMBLY FOR USE IN LEXAN BOX. PT. NO. 01114-639-04
 - 0.1 M3 INDEX ASSEMBLY WITH 1 VANE CHOPPER FOR USE IN ALUM. BOX W/ELEC. CONN. PT. NO. 01114-639-61
 - 0.1 M3 INDEX ASSEMBLY WITH 10 VANE CHOPPER FOR USE IN ALUM. BOX W/ELEC. CONN. PT. NO. 01114-639-66
 - 0.1 M3 INDEX ASSEMBLY FOR USE IN ALUM. BOX W/O ELEC. CONN. PT. NO. 01114-639-11

NOTE:
 FOR COMPLETE INDEX AND ALUMINUM BOX ASSEMBLIES SEE MM-1841-B1, -B3
 FOR INDEX AND LEXAN BOX MOUNTING SEE MM-1840-B

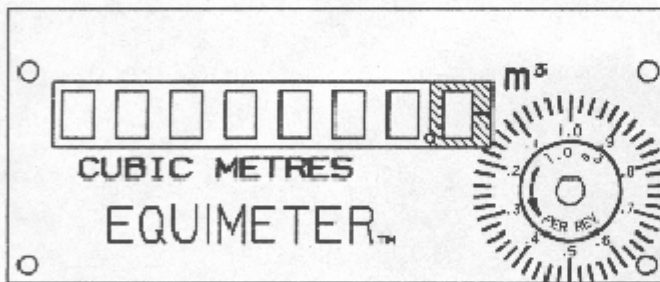
SHEET 5 OF 7.

REV.	DATE	 INCORPORATED 905 Liberty Blvd. DuBois, PA 15801 A BTR Company
		DIAL FACES WITH 8 OPEN WINDOWS
		DR. BY: MJZ
		DATE: 01-13-98
		MM-1842-B5



DIAL PLATE 0.1 M3 (SPECIAL FOR TAIWAN)
 PT. NO. 01114-039-47

AVAILABLE IN THE FOLLOWING INDEXES:
 -0.1 M3 INDEX ASSEMBLY
 FOR USE IN LEXAN BOX.
 PT. NO. 01114-639-69
 -0.1 M3 INDEX ASSEMBLY
 FOR USE IN ALUM. BOX W/O ELEC. CONN.
 PT. NO. 01114-639-56



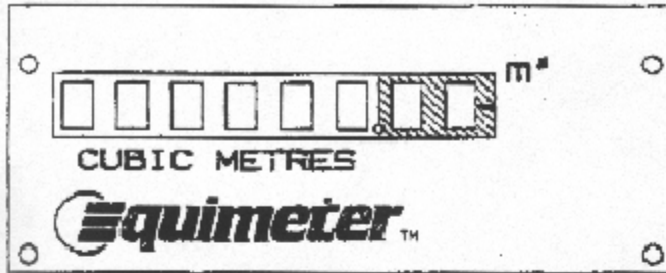
DIAL PLATE 1.0 M3 (SPECIAL FOR TAIWAN)
 PT. NO. 01114-039-48

AVAILABLE IN THE FOLLOWING INDEXES:
 -1.0 M3 INDEX ASSEMBLY
 FOR USE IN LEXAN BOX.
 PT. NO. 01114-639-70
 -1.0 M3 INDEX ASSEMBLY
 FOR USE IN ALUM. BOX W/O ELEC. CONN.
 PT. NO. 01114-639-57

NOTE:
 FOR COMPLETE INDEX AND ALUMINUM BOX
 ASSEMBLIES SEE MM-1841-B1, -B3
 FOR INDEX AND LEXAN BOX MOUNTING
 SEE MM-1840-B

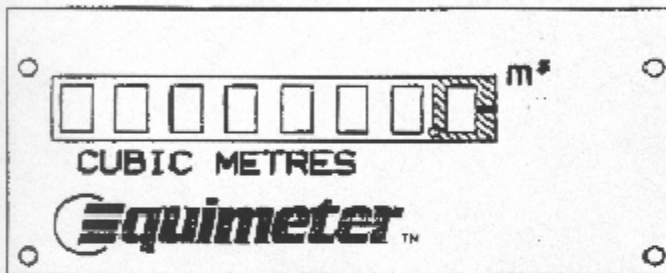
SHEET 6 OF 7.

REV.	DATE	 INCORPORATED 805 Liberty Blvd. DuBelo, PA 18001 A BTR Company	
		INDUSTRIAL METER 8 WHEEL VDR INDEX	
		DIAL FACES WITH 8 OPEN WINDOWS	
		DR. BY: MJZ	MM-1842-B6
		DATE: 01-13-90	



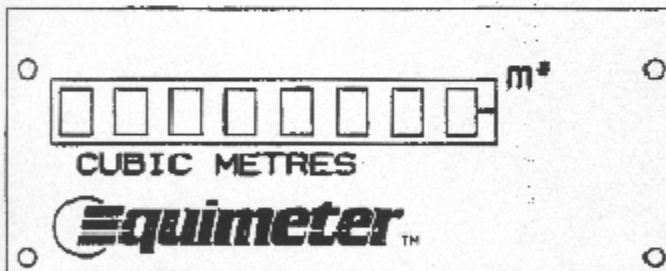
DIAL PLATE 0.1 M3
 PT. NO. 01114-039-55

AVAILABLE IN THE FOLLOWING INDEXES:
 -0.1 M3 INDEX ASSEMBLY
 FOR USE IN LEXAN BOX.
 PT. NO. 01114-639-77
 -0.1 M3 INDEX ASSEMBLY
 FOR USE IN ALUM. BOX W/O ELEC. CONN.
 PT. NO. 01114-639-74



DIAL PLATE 1.0 M3
 PT. NO. 01114-039-56

AVAILABLE IN THE FOLLOWING INDEXES:
 -1.0 M3 INDEX ASSEMBLY
 FOR USE IN LEXAN BOX.
 PT. NO. 01114-639-78
 -1.0 M3 INDEX ASSEMBLY
 FOR USE IN ALUM. BOX W/O ELEC. CONN.
 PT. NO. 01114-639-75



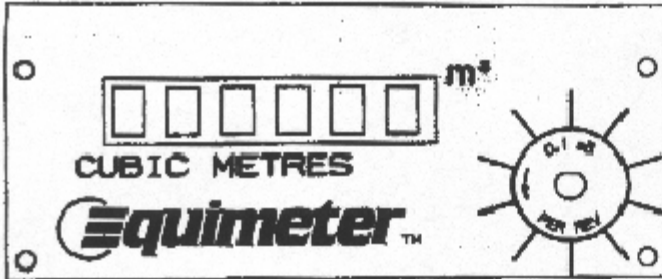
DIAL PLATE 10.0 M3
 PT. NO. 01114-039-57

AVAILABLE IN THE FOLLOWING INDEXES:
 -10.0 M3 INDEX ASSEMBLY
 FOR USE IN LEXAN BOX.
 PT. NO. 01114-639-79
 -10.0 M3 INDEX ASSEMBLY
 FOR USE IN ALUM. BOX W/O ELEC. CONN.
 PT. NO. 01114-639-76

NOTE:
 FOR COMPLETE INDEX AND ALUMINUM BOX
 ASSEMBLIES SEE MM-1841-B1, -B3
 FOR INDEX AND LEXAN BOX MOUNTING
 SEE MM-1840-B

SHEET 7 OF 7.

REV.	DATE	 INCORPORATED 305 Liberty Blvd. Dillsboro, PA 16801 A BTR Company	
		INDUSTRIAL METER & WHEEL VOR INDEX	
		INTERNATIONAL DIAL FACES	
		DR. BY: MJZ	MM-1842-B7
		DATE: 01-13-98	




DIAL PLATE 0.1 M3
 PT. NO. 01114-639-58
 AVAILABLE IN THE FOLLOWING INDEXES:

- 0.1 M3 INDEX ASSEMBLY (CONSUMERS GAS)
 FOR USE IN A LEXAN BOX.
 PT. NO. 01114-639-58
- 0.1 M3 INDEX ASSEMBLY (CONSUMERS GAS)
 FOR USE IN AN ALUMINUM BOX
 PT. NO. 01114-639-59

NOTE:
 FOR INDEX AND LEXAN BOX MOUNTING
 SEE MM-1840-B1

SHEET 9 OF 8.

REV.	DATE	
		 INCORPORATED 805 Liberty Blvd. Chichester, PA 19801 A BTR Company
		INDUSTRIAL METER 8 WHEEL VDR INDEX
		DIAL FACES, WITH 6 OPEN WINDOWS
		DR. BY: <i>RTS</i>
		DATE: 12/17/98
		MM-1842-B8