

TRADE AND COMMERCE  
CANADA

STANDARDS BRANCH

S-EA.562

OTTAWA September 20, 1962.

TYPE APPROVAL  
GENERAL ELECTRIC TYPE "HR"  
SINGLE-PEN ROUND-CHART RECORDING POTENTIOMETER

The apparatus specified and illustrated herein has been duly approved by the Standards Branch under the provisions of the Electricity Inspection Act, Chap.94, R.S. 1952, and may be admitted to verification in Canada.

Apparatus Approved: Type "HR" Single-Pen Round-Chart Recording Potentiometer, manufactured by the General Electric Company, Schenectady, New York, U.S.A., and distributed in Canada by the Canadian General Electric Company Limited, Quebec 8, P.Q.

## Rating of Apparatus:

*Millivolt Input .....	Ranges up to 1500 millivolts
Record .....	Continuous inked line
Standardization .....	Zener diode regulated voltage reference source
Pen Speed .....	4, 10 and 24 seconds for full-scale travel
Chart Speed .....	24 hours standard (1, 8 or 12 hours, or 7 days available)
Chart Size .....	12-inch diameter, 4-9/16 inches calibrated width
Supply Voltage .....	120 or 240 volts
Supply Frequency .....	50 or 60 cycles
Maximum External Resistance ..	3000 ohms
*Failure Protection .....	Optional

\*The kilowatts that the millivolts represent shall be shown on the nameplate or scale.

\*Failure protection, when incorporated, causes the recorder pen to be driven off scale (either upscale or downscale) in the event of a break in the primary detector circuit or a component failure.

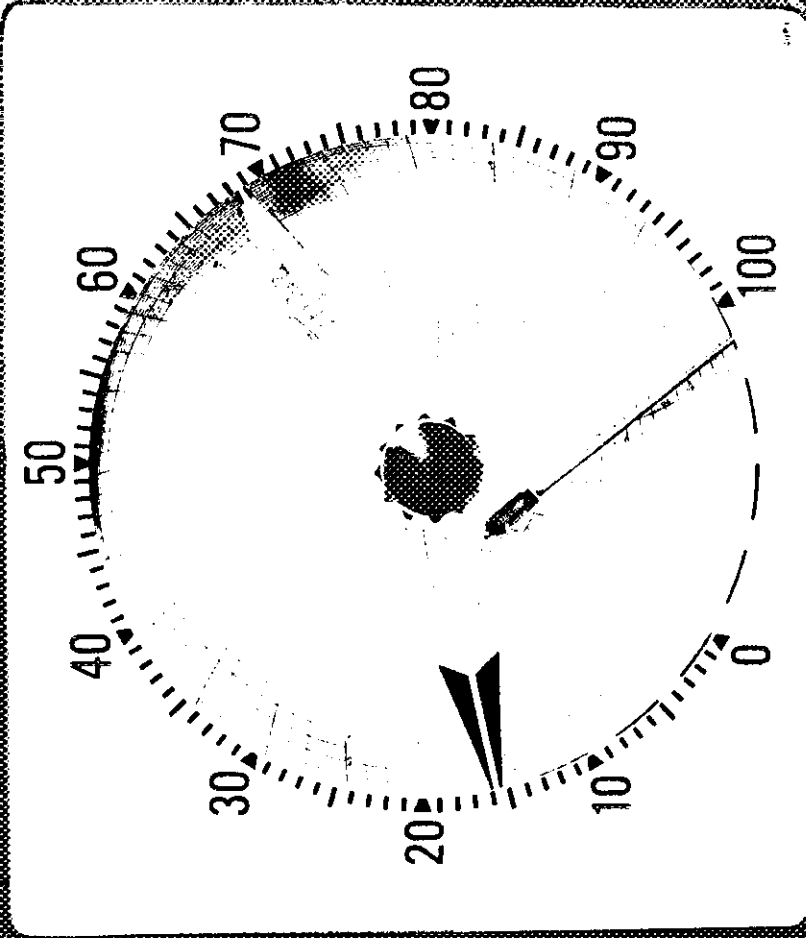
Description: The measuring circuit of the type "HR" round-chart recorder is the same as that used in the type "HF" receiving approval under S-EA.531 of December 6, 1961 except that instead of a straight line movement of the pen, a hub assembly is driven by a drive cable connected to the slide wire assembly through a series of pulleys. The indicating pointer and pen cam is mounted on the hub assembly, the movement of which is converted to arc-type movement of the pen through a spring-loaded pen-cam follower. The indicator being mounted on the hub travels through a 300-degree full-scale arc, and the pen by reason of the cam traces a 30-degree full-scale arc on the chart.

The recorder can be equipped with a set-point index which can be manually set by a knob in the centre of the front cover. The set-point index

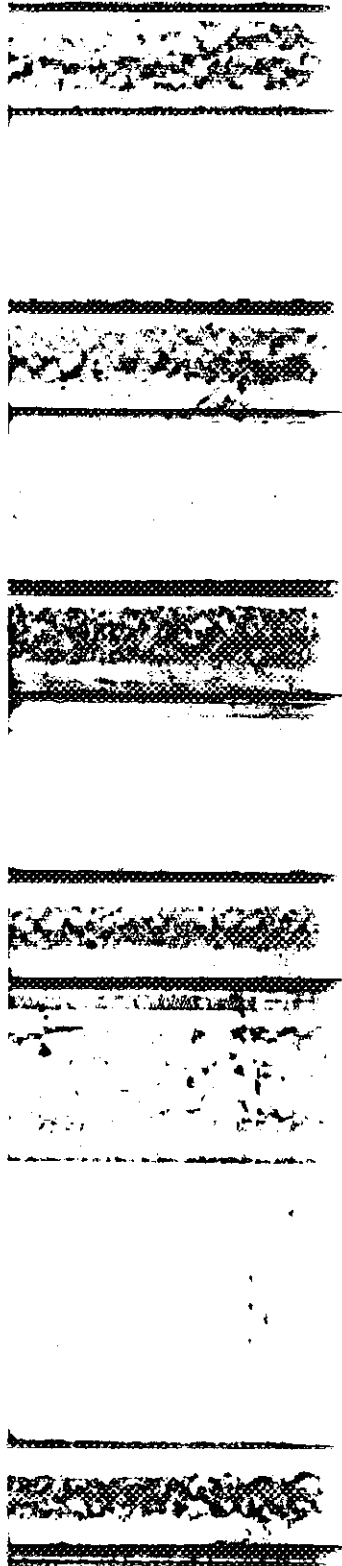
..... (actuates)<sup>2</sup>



GENERAL ELEC. TYPE "HR" SINGLE-PEN ROUND-CHART RECORDING POTENTIOMETER



GENERAL ELECTRIC



- -

.....

.....

.....

.....