

TRADE AND COMMERCE  
CANADA

S-EA.438

## STANDARDS BRANCH

OTTAWA..... March 9, 1960.

TYPE APPROVALFERRANTI-PACKARD TYPES "B2TA" AND "B2TS"  
SINGLE-PHASE COMBINATION THERMAL DEMAND-ENERGY METERS

The apparatus specified and illustrated herein has been duly approved by the Standards Branch under the provisions of the Electricity Inspection Act, Chapter 94, R.S. 1952, and may be admitted to verification in Canada.

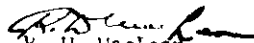
Apparatus Approved: Types "B2TA" and "B2TS" Single-Phase Combination Thermal Demand-Energy Meters, manufactured by Ferranti-Packard Electric Limited, St. Catharines, Ontario.


## Rating of Apparatus:

Current Range .....	2-130 amperes	2-200 amperes
Types Approved .....	"B2TS" and "B2TA"	"B2TS" only
Voltage .....	230 or 240 volts	230 or 240 volts
Wire .....	3	3
Test Period .....	32 minutes	32 minutes
Scale Graduation .....	1500	1200
Full Scale Value .....	30 KW	48 KW
*Multiplier .....	20	40
Register Ratio .....	166-2/3	333-1/3
Register Type .....	Clock and Cyclometer	Clock and Cyclometer
Phase .....	1	1
Frequency .....	60 cycles	60 cycles

\*Multiplier applies to both watt-hour and demand readings.

Description: Except for the current ratings, these meters are the same as the types "B2TA" and "B2TS" described on Circulars S-EA.432, January 4, 1960 and S-EA.437, January 18, 1960. It should be noted that cyclometer registers as well as the clock type are approved for use on all ratings approved to date. This cyclometer register incorporates the "quick-reset" feature. The 2-200 ampere "B2TS" is approved for use only with a high capacity socket.

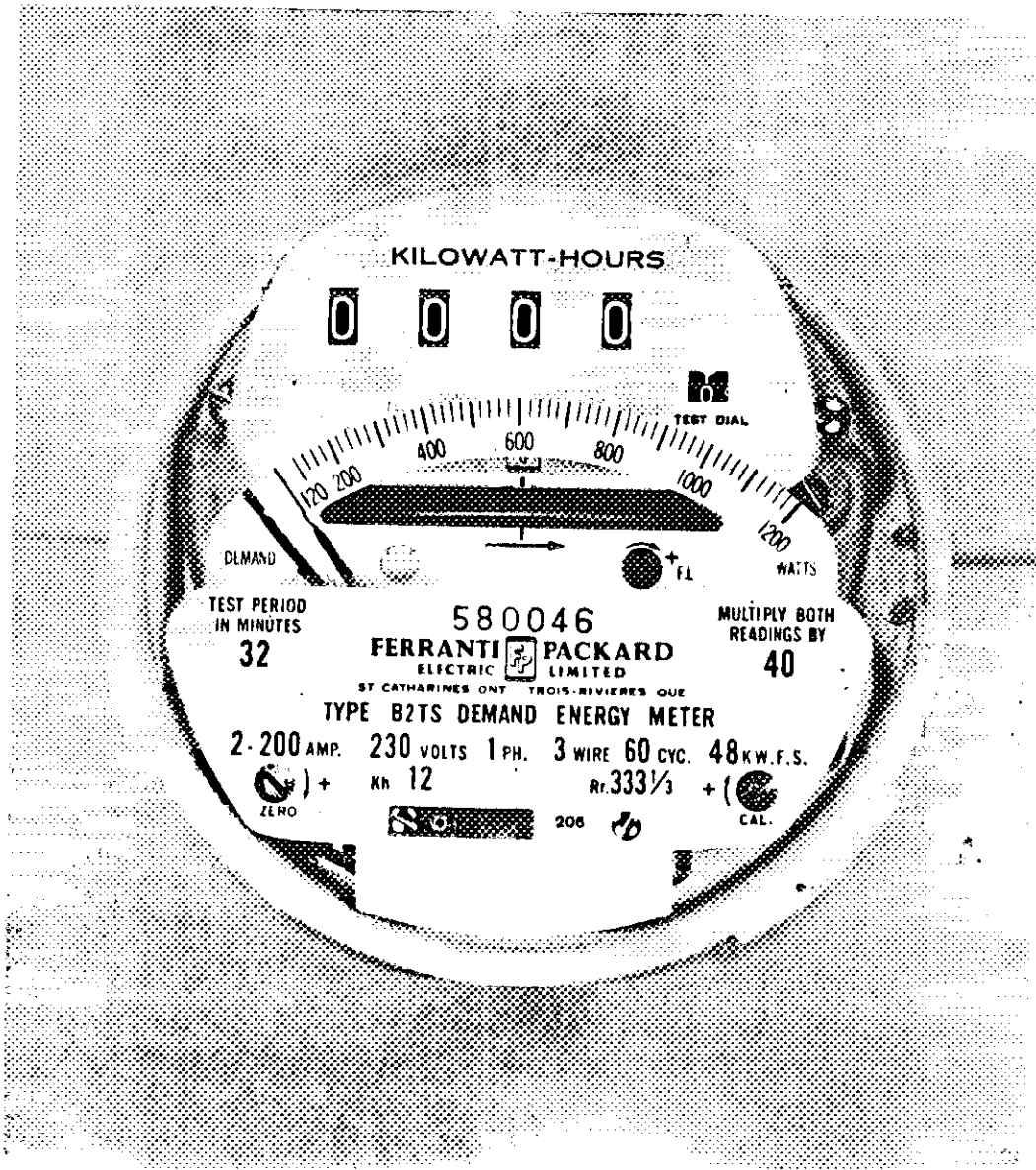
  
R. E. MacLean,  
Director,  
Standards Branch.

  
E. F. Power,  
Assistant Director (E&G),  
Standards Branch.

Ref: A-851B



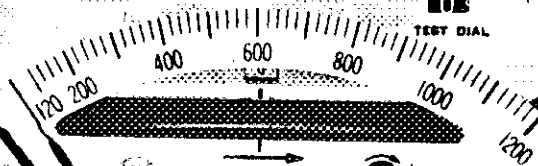
FERRANTI-PACKARD TYPE "B2TS" DEMAND-ENERGY METER



KILOWATT-HOURS

0 0 0 0

TEST DIAL



DEMAND

WATTS

TEST PERIOD  
IN MINUTES

32

580046

FERRANTI-PACKARD  
ELECTRIC LIMITED

ST CATHARINES ONT TROIS-RIVIERES QUE

TYPE B2TS DEMAND ENERGY METER

MULTIPLY BOTH  
READINGS BY

40

2-200 AMP. 230 VOLTS 1 PH. 3 WIRE 60 CYC. 48 KW.F.S.

ZERO

Kh 12

R. 333 1/3

CAL.

206

