

TRADE AND COMMERCE
CANADA

SD-LA.244

STANDARDS DIVISION

OTTAWA, May 25, 1956.

TYPE APPROVALPACKARD TYPES "BLXA" AND "BLXS"
SINGLE-PHASE WATTHOUR METERS

The apparatus specified and illustrated herein has been duly approved by the Standards Division under the provisions of the Electricity Inspection Act, Chapter 94, R.S. 1952, and may be admitted to verification in Canada.

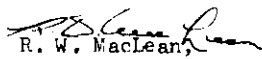
Apparatus Approved: Types "BLXA" and "BLXS" Single-Phase Watthour Meters, manufactured by the Packard Electric Company Limited, St. Catharines, Ontario.

Rating of Apparatus:

Normal Range 0.75 - 100 amperes
Voltage 230 or 240
Wire 3
Frequency 60 cycles
K_h 3-1/3

Description: The types "BLXA" and "BLXS" are similar in nearly all respects to the types "BLA" and "BLS" respectively but they are designed to provide the extended current range. The essential differences are a reduction in the size of the anti-creep holes and a change in the nameplate.

The clock- and cyclometer-type registers designated by the manufacturer as Style D, and the 5-dial clock register Style C, are approved for use on this meter.


R. W. MacLean,
Director,
Standards Division.

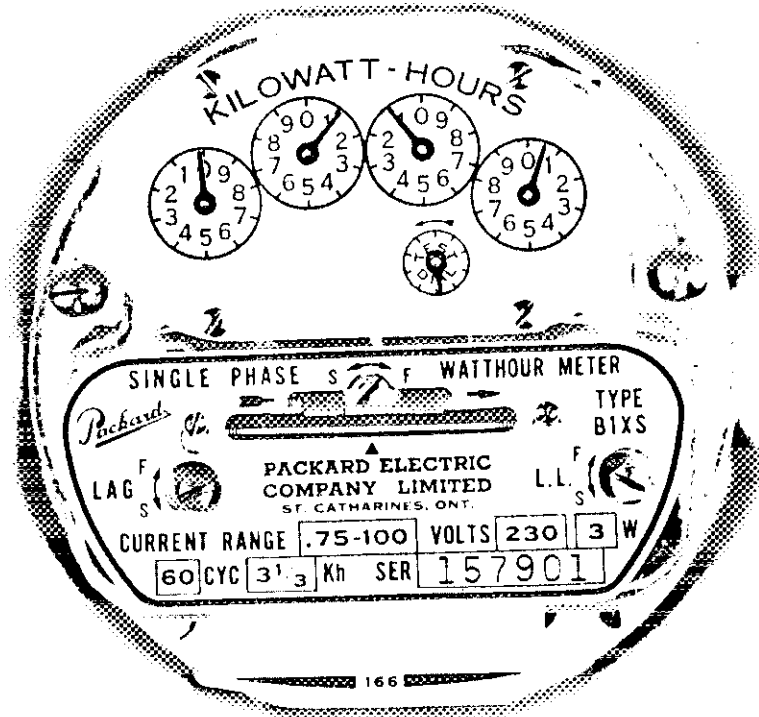
Ref: A-555



E. F. Power,
Assistant Director (E&G),
Standards Division.



PACKARD TYPE "BIXS" SINGLE-PHASE WATTHOUR METER



10

10

10