



TRADE AND COMMERCE
CANADA

STANDARDS DIVISION

OTTAWA, April 30, 1956.

TYPE APPROVAL

CANADIAN GENERAL ELECTRIC
TYPES "IM-50" AND "IM-55" DEMAND-ENERGY METERS

The apparatus specified and illustrated herein has been duly approved by the Standards Division under the provisions of the Electricity Inspection Act, Chapter 94, R.S. 1952, and may be admitted to verification in Canada.

Apparatus Approved: Types "IM-50A", "IM-50S", "IM-55A" and "IM-55S" Demand-Energy Meters, manufactured by the Canadian General Electric Company Limited, Quebec 8, P.Q.

Rating of Apparatus:

Direct Reading Demand Scale up to 24 KW with "IM-55"
up to 48 KW with "IM-50"

Universal Demand Scale register ratio 166-2/3 or 83-1/3

All other ratings in accordance with previous approvals on types "I-50" and "I-55" watthour meters and type "M-30" demand register.

Description: Approval is granted herewith for use of the Type "M-30" demand register with either the Types "I-50" or "I-55" single-phase watthour meters. Watthour meters so equipped are designated Types "IM-50A", "IM-50S", "IM-55A", "IM-55S", as the case may be. A test dial is not required on the register except where the full demand scale reading is less than 10 KW.

Demand scales are limited by the maximum capacity of the watthour portion of the meter. However, demand scales with full scale reading less than the watthour maximum rating may be used. In all cases the lower ten per cent of the demand scale must be blocked out.

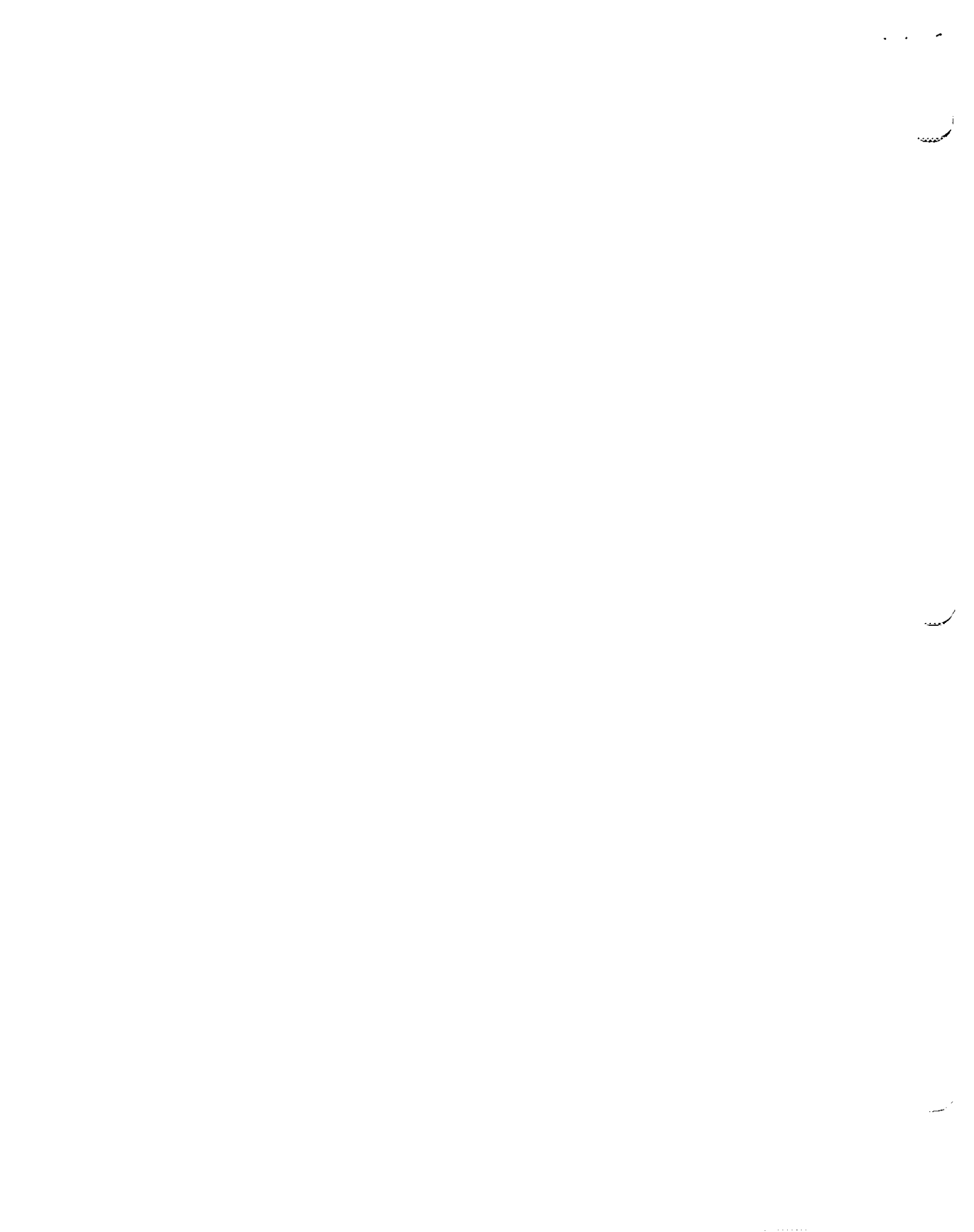
Direct reading demand scales will have multipliers of either 1 or 10. The so-called universal register requires a multiplier appropriate to the meter with which it is associated. These registers have a ratio of 166-2/3 (sometimes 83-1/3) and the 166-2/3 register ratio would have a full scale marking of 1, 1.8 or 2 KW while the 83-1/3 register ratio would have a full scale marking of 2, 3.6 or 4 KW.

E. F. Power

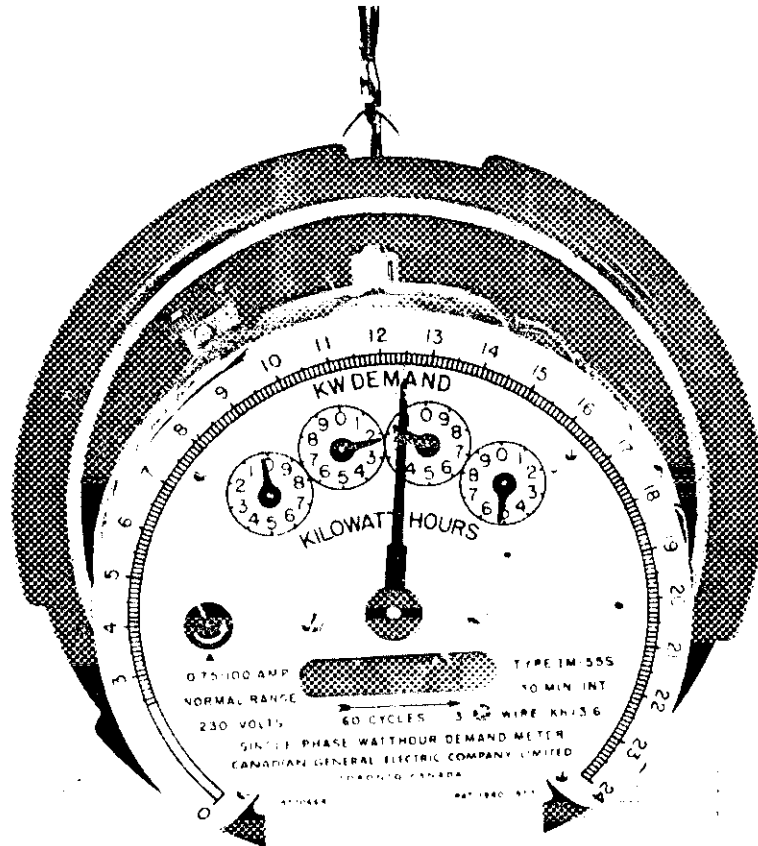
E. F. Power,
Assistant Director (E&G),
Standards Division.

R. W. MacLean
R. W. MacLean,
Director,
Standards Division.

Ref: A-531



CANADIAN GENERAL ELECTRIC
TYPE "IM-55S" DEMAND-ENERGY METER



NO. 111111

