

TRADE AND COMMERCE
CANADA

SD-RA.210

STANDARDS DIVISION

OTTAWA, September 21, 1955.

TYPE APPROVALPACKARD TYPES "PB", "PBA" AND "PBS" POLYPHASE WATTHOUR METERS

The apparatus specified and illustrated herein has been duly approved by the Standards Division under the provisions of the Electricity Inspection Act, Chapter 94, R.S. 1952, and may be admitted to verification in Canada.

Apparatus Approved: Types "PB", "PBA" and "PBS" Polyphase Watthour Meters, manufactured by the Packard Electric Company Limited, St. Catharines, Ontario.

Rating of Apparatus:	TYPE "PBA"			TYPE "PB" ONLY
Ampere Range75-60	1.25-100	2.5-100	2.5-100
Disc Constant* ...	3,6	6	12	12
Volts	115 or 120	115 or 120	115 or 120	115, 230, 460 or 120, 240, 480
Wire	3	3	3	3
Phase	3	3	3	3
Frequency	60 cycles	60 cycles	60 cycles	60 cycles

TYPES "PB" AND "PBS"				
Ampere Range12-10	.25-20	.75-60	1.25-100
Disc Constant*6	1.2	3,6	6
Volts	115, 230, 460 or 120, 240, 480	115, 230, 460 or 120, 240, 480	115, 230, 460 or 120, 240, 480	115, 230, 460 or 120, 240, 480
Wire	3	3	3	3
Phase	3	3	3	3
Frequency	60 cycles	60 cycles	60 cycles	60 cycles

* Values shown are for the 115 or 120 volt ratings; others are proportional to multiples of the rated voltage.

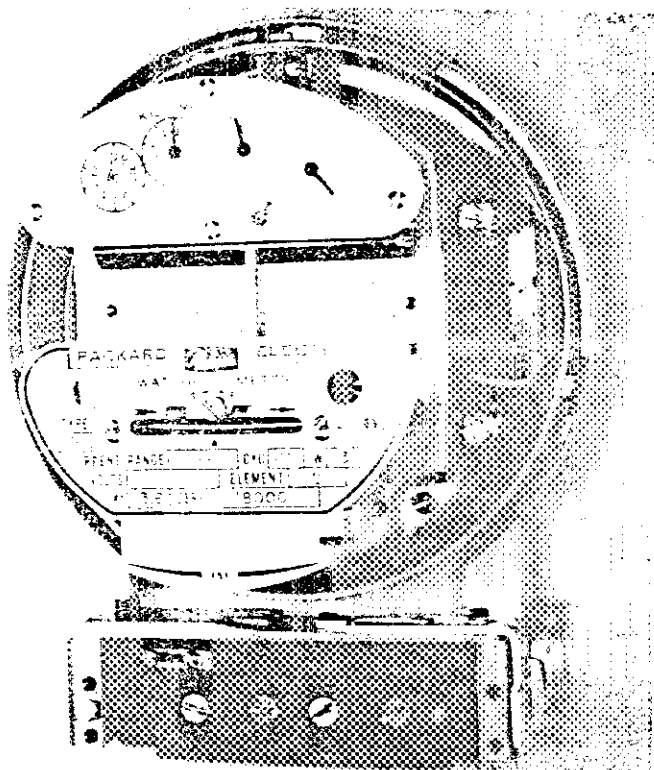
Description: The new Packard polyphase meters are of the two-element 'vertical' two-disc single-shaft construction. They are supplied as types "PBA", "PB" and "PBS" in the three generally accepted standard mountings. The type "PBA" meter is primarily a network type using the standard 'A' base. The type "PB" meter uses the general purpose polyphase bottom-connected base which may be adapted for up to 8 current leads. The type "PBS" meter is similar to the type "PB" in approved ratings but uses the standard socket construction. Features of the meters are slow speed, long range performance, load and voltage compensation and Class I and Class II temperature compensation. Voltage and current coil insulation is similar to that recently approved for single-phase meters. The voltage coils undergo a factory high potential test of 7000 volts. The register is similar to the recently approved Packard single-phase register, but modified to fit the available space. The magnet is Alnico V and is similar to that of the type "B1A", but larger. The housing and method of adjustment are the same as for the Packard single-phase meter. The light-load adjustment is made by means of two adjusting screws at the right-hand side of the cast aluminum grid or frame. The low power factor adjustment is made by means of two soldered pigtailed clipped to the left-hand side of the grid. The torque or balance adjustment is made by means of steel adjusting screws in the voltage core auxiliary gaps.

R. W. MacLean
R. W. MacLean,
Director,
Standards Division.

Ref: A-457

E. F. Power
E. F. Power,
Assistant Director (E&G),
Standards Division.

PACKARD TYPE "PBA"
POLYPHASE WATTHOUR METER



PACKARD TYPE "PRS"
POLYPHASE WATTHOUR METER

