

TRADE AND COMMERCE
CANADA

STANDARDS DIVISION

OTTAWA, November 19, 1954.

TYPE APPROVALCANADIAN WESTINGHOUSE TYPE "RO" CURRENT TRANSFORMERS

The apparatus specified and illustrated herein has been duly approved by the Standards Division under the provisions of the Electricity Inspection Act, Chapter 94, R.S. 1952, and may be admitted to verification in Canada.


Apparatus Approved: Type "RO" Current Transformer, manufactured by the Canadian Westinghouse Company Limited, Hamilton, Ontario.


Rating of Apparatus:

Primary Current 10, 15, 20, 25, 30, 40, 50, 75, 100, 150,
200, 300, 400, 600, 800 amperes
Secondary Current 5 amperes
Voltage Ratings 5 KV, 8.7 KV, 15 KV
Rated Burden* 50 VA at .5 p.f.
Wire 2
Frequency 25 to 60 cycles
Style Dry Outdoor

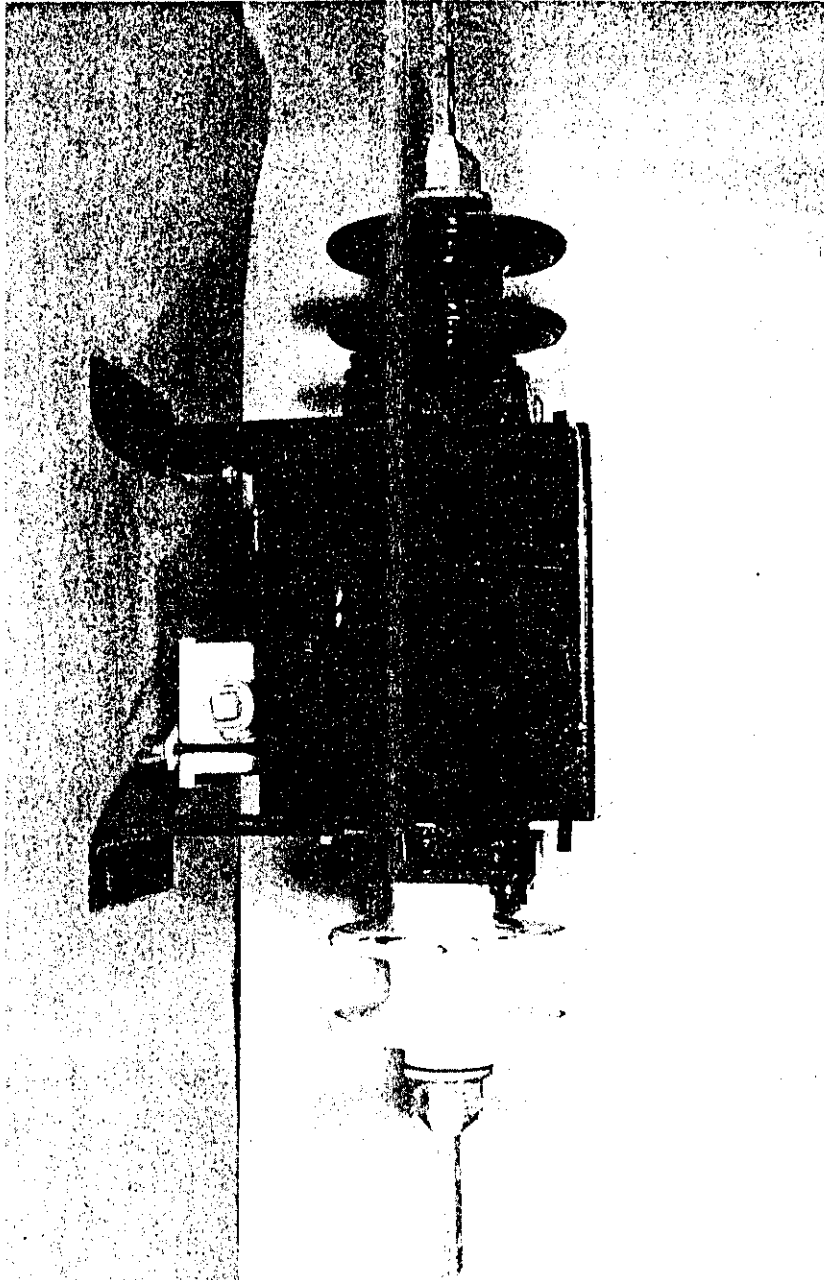
* marked on nameplate.

Description: The type "RO" current transformers are designed for outdoor service and are intended particularly for substation construction with straight through primary connections. They are of the wound type design with Silicon steel core. The coil and core assembly is fitted into a bonderized steel case which is filled under vacuum with an insulating plastic. The primary terminals are arranged to provide straight through connections. The heavy copper stud terminals can accommodate a variety of connectors. Solderless connectors are used on secondary terminals which are mounted on a moulded terminal block with weatherproof housing and with conduit connection which is adjustable to four positions. Polarity is indicated by one white primary insulator and the letters X_1 and X_2 are moulded on the secondary terminal block. Numerical suffixes on the type designation indicate the voltage rating.


R. W. MacLean,
Director,
Standards Division.


E. F. Power,
Assistant Director (E&G),
Standards Division.

Ref: A-400



CANADIAN WESTINGHOUSE TYPE "RO" CURRENT TRANSFORMER

SD-EA.166