



TRADE AND COMMERCE  
CANADA

SD-EA.93

## STANDARDS DIVISION

OTTAWA, February 2, 1953.  
(Superseding Circular SD-EC.147  
of January 7, 1953)

MODIFICATION OF TYPE APPROVAL

PACKARD TYPES "B1A" AND "B1S"  
COMBINATION 2-WIRE/3-WIRE WATTHOUR METERS

The modification to the apparatus specified and illustrated herein has been duly approved by the Standards Division under the provisions of The Electricity Inspection Act, Chapter 22, 1928, as amended, and the modified apparatus may be admitted to verification in Canada.

Apparatus Modified: Types "B1A" and "B1S" Single-Phase Watthour Meters, manufactured by the Packard Electric Company Limited, St. Catharines, Ontario.


## Rating of Apparatus:

Rated Amperes ..... 15  
Maximum Amperes ..... 60  
Kh ..... 2  
Voltage ..... 115/230  
Frequency ..... 60 cycles.

Description: These meters are modifications of the standard 60-cycle, 15-ampere meters approved under Approval Circular SD-EA.84 of August 21, 1952. The modification consists of constructing the 3-wire meters in such a way that they may be put into service initially as 2-wire meters and later, when the necessity arises, readily converted into completely standard 3-wire meters. The diagrams on the back of this circular illustrate the conversion procedure.

Two nameplates are supplied, the 2-wire one, which is fitted on top of the other, does not extend down as far as the standard plate and hides only those ratings which are not common to both the 2-wire and 3-wire meters. When the meter is converted to 3-wire, the top 2-wire nameplate is discarded.

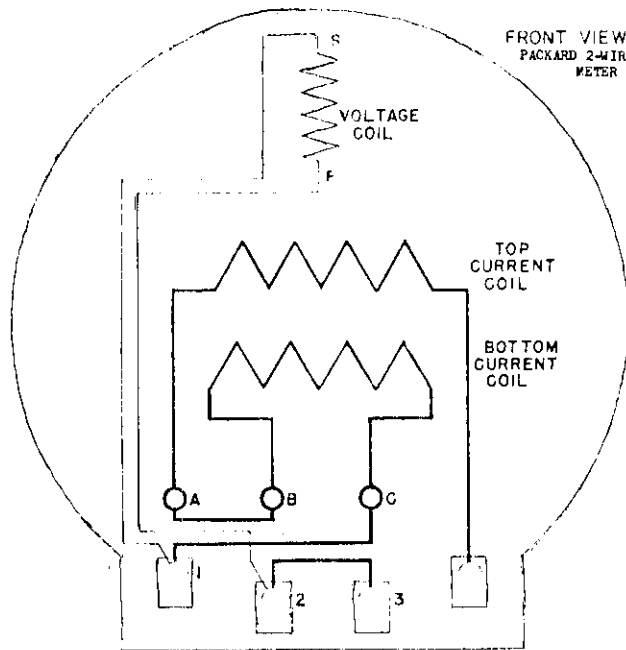
Application: These meters are intended for use where 2-wire services are expected to be temporary. The conversion is not intended to be reversible.

  
R. W. MacLean  
Director,  
Standards Division.



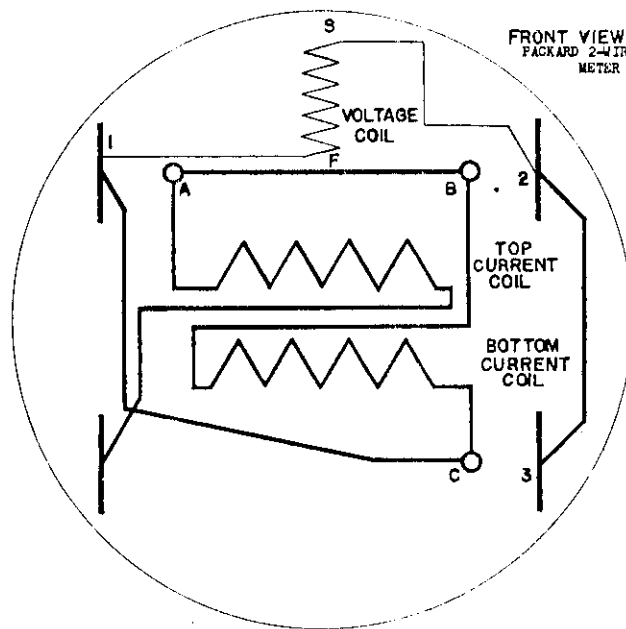
E. F. Power,  
Assistant Director (E&G),  
Standards Division.

Ref: A-239



FRONT VIEW (A-BASE)  
PACKARD 2-WIRE/3-WIRE  
METER

FOR 2 WIRE OPERATION - CONNECTIONS ARE AS SHOWN.  
FOR 3 WIRE OPERATION - JUMPERS (1-C), (A-B) & (2-3)  
ARE REMOVED & A FASTENED TO #1 TERMINAL, B TO  
#2 & C TO #3



FRONT VIEW (S-BASE)  
PACKARD 2-WIRE/3-WIRE  
METER

FOR 2 WIRE OPERATION - CONNECTIONS ARE AS SHOWN  
FOR 3 WIRE OPERATION - JUMPERS (1-C), (A-B) & (2-3)  
ARE REMOVED & A FASTENED TO #1 TERMINAL, B TO  
#2 & C TO #3