



CANADA

DEPARTMENT OF TRADE AND COMMERCE
STANDARDS DIVISIONOTTAWA, May 23, 1950.
(Superseding Circular Letter SD-EC.80,
dated February 28, 1950.)

NOTIFICATION OF TYPE APPROVAL

The apparatus specified and illustrated herein has been duly approved by the Standards Division under the provisions of The Electricity Inspection Act, Chapter 22, 1928, and may be admitted to verification in Canada.

Apparatus Approved: Type "CS-1" Single-Phase Detachable Watthour Meter, manufactured by the Canadian Westinghouse Company, Hamilton, Ontario.

Rating of Apparatus:

Amperes Rated - 50; Maximum - 200
Voltage 115/230
Wire 3
Frequency 60 cycles.

Description: This meter has been developed to fulfil the requirements for single-phase, 3-wire loads up to 200 amperes, particularly for domestic and similar services. It is made in the above-noted size ONLY.

This meter is the same as the type "CS-1" meter, already approved, except as noted in the following:

CASE: The case has 8 blade terminals - and 2 blades are in parallel for each main connection.

SOCKET: The socket is of the rectangular box form, with 8 jaws - 2 jaws to be used in parallel for each connection.

ELECTRO-MAGNET: The current coil has heavier conductors than are used in the standard 50-ampere; but the number of ampere turns in the current coil and the method of wiring it are the same.

REGISTER: The register is of the 5-dial form. No test dial is necessary.

NAMEPLATE: The nameplate is marked as follows:

"Canadian Westinghouse Company, Limited,
Hamilton, Canada"

"Type CS-1"

"230/115 Volts"

"Amperes - 50 Rated, 200 Maximum"

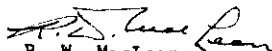
" $K_h = 6-2/3$ "

"3-Wire"

"Single-Phase"

"Style #H-56118"

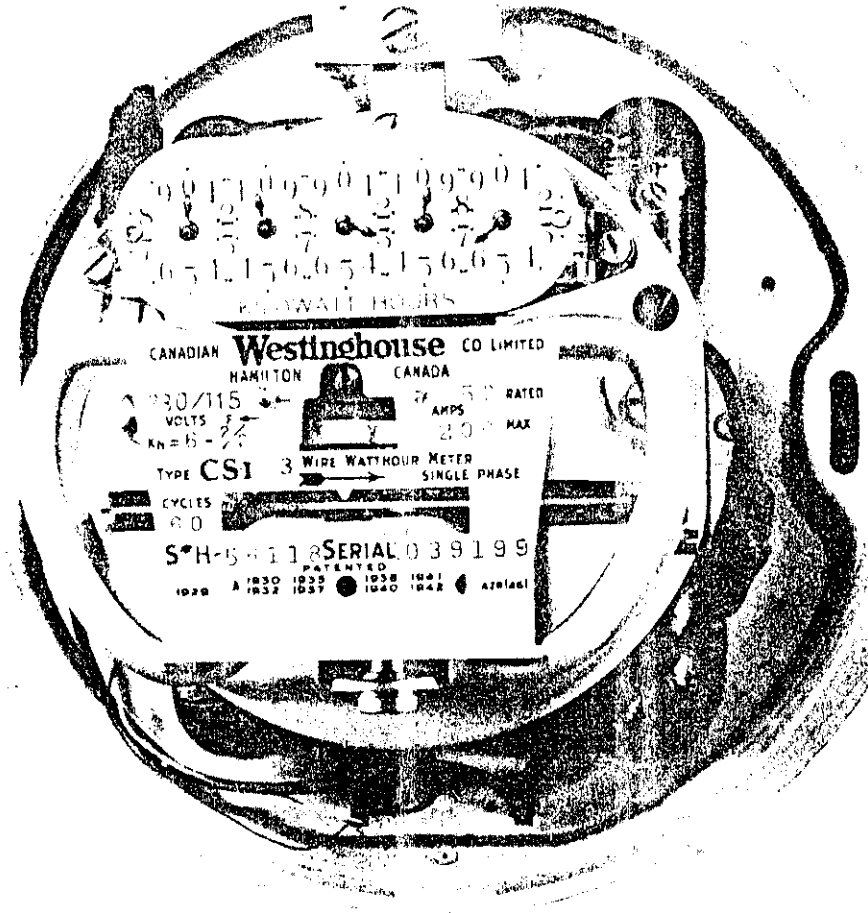
"Serial _____"


R. W. MacLean,
Director,
Standards Division.


E. F. Power,
Assistant Director (E. & G.)
Standards Division.

CANADIAN WESTINGHOUSE TYPE "CS-1" DETACHABLE WATTHOUR METER
FOR LOADS UP TO 200 AMPERES

SD-RA.23



21155 Westinghouse 21156
WATTHOUR METER SOCKET
[]
[]