



**NOTICE OF APPROVAL
AVIS D'APPROBATION**

E-163

Ottawa, April 9, 1979

WESTINGHOUSE TYPE W-3 ISOLATION RELAY

Input: An external 3 wire KYZ, 120V $\pm 10\%$ a.c. source is required to operate two relays alternately.

Output: Two pairs of contacts, one of each pair on each relay, produce two separate 3 wire KYZ dry contact outputs.

Relay Type: Sigma dry contact, transparent cover, octal base, type no. 42R06Z-4000 ACG-SIL or equivalent.

Operating Voltage: 120V a.c. $\pm 10\%$, 50 or 60Hz

Contact Rating: 5 amperes maximum at 120V a.c. or 28V d.c.

Dielectric Strength: 1000V a.c. except across the contacts, which are rated 500V d.c. or 350V r.m.s.

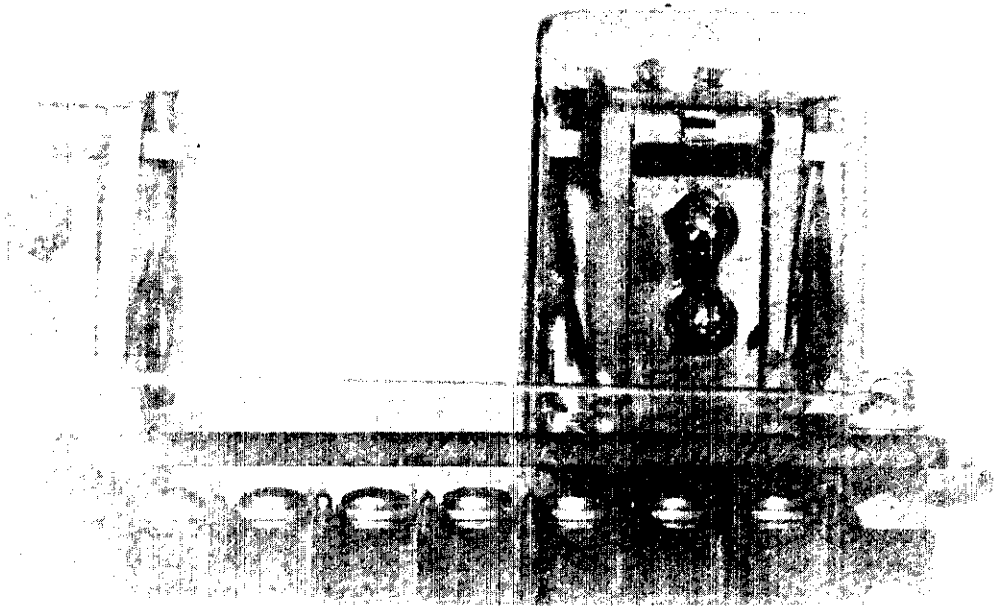
Temperature Range: -40°C to $+70^{\circ}\text{C}$

Description

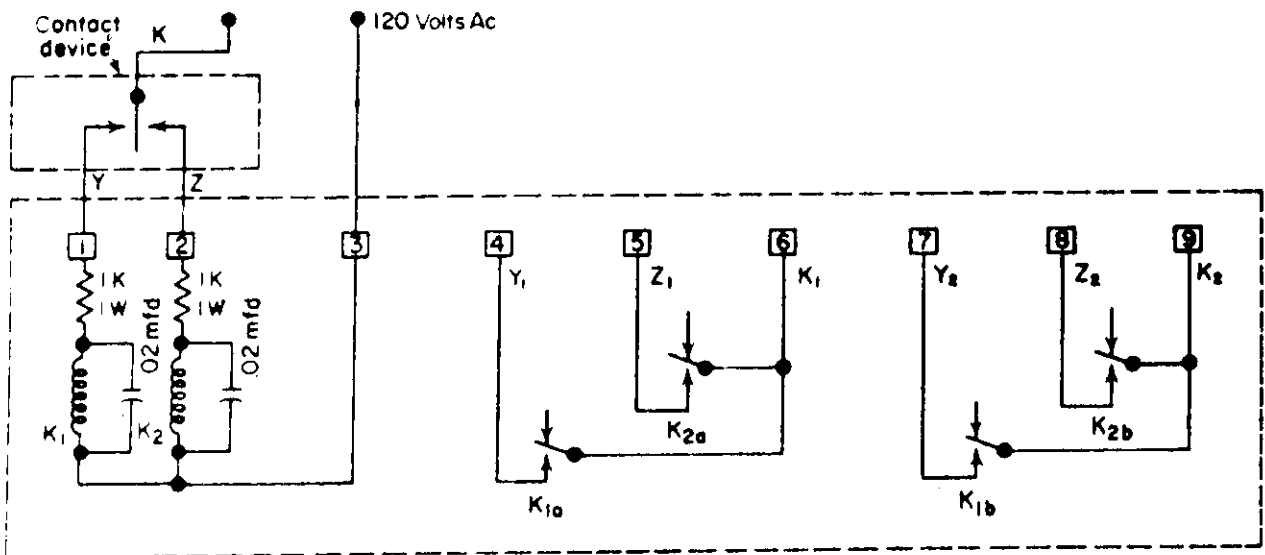
The type W-3 isolation relay provides two 3-wire control outputs from a single 3-wire input. This makes it possible to operate two demand meters or totalizing relays from a single 3-wire pulse initiator. It also provides isolation for the pulse initiator from pilot wires to a remote pulse receiver.

A 1000 ohm resistor is connected in series with each relay coil between terminals 1 and 2 and the relay socket pins to limit current flow and a 0.02 microfarad capacitor is connected in parallel with each relay coil to provide arc suppression for the contacts of the pulse initiating device.

Access to the chassis interior, and external terminals is prevented by sealing wire which passes through drilled chassis cover screw heads and terminal cover screw heads.



W-3 Wiring Diagram

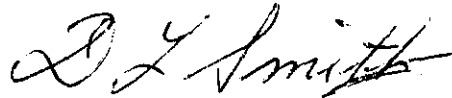


Withdrawal of the relays while in service is effectively prevented by a screw and plastic washer which fits into the centre post of each relay plug and overlaps the under side of the octal socket.

The type W-3 isolation relay may be mounted in any position, but for outdoor use, it must be installed on a weatherproof enclosure.

Approval granted to:

Westinghouse Canada Limited
Hamilton, Ontario



D. L. Smith
Chief,
Electricity and Gas Division
Legal Metrology Branch

Ref: G 6565-C3-43