



Department of consumer and corporate affairs / Ministère de la consommation et des corporations



**STANDARDS BRANCH - DIRECTION DES NORMES**

**NOTICE OF APPROVAL - AVIS D'APPROBATION**

NO.
E - 116
DATE
November 21/72

SANGAMO TYPE "K2X" SINGLE PHASE WATTHOUR METER

Current Range	1.0 - 100 amperes
Voltage	120 volts
Frequency	60 Hz
Wire	2
Disc Constant (Kh)	1.8
Registers	4-dial clock Rr 55 5/9 with test dial
	5- " " " " " " "
	4- " " " 55 5/9 with test dial
Style	Bottom Connected

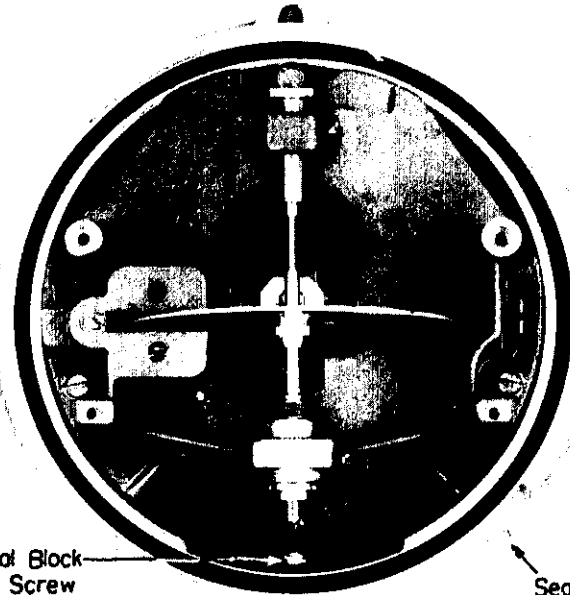
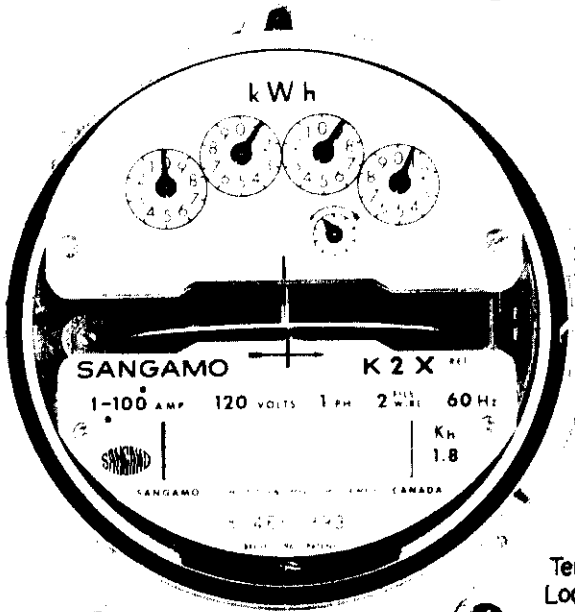
DESCRIPTION

The type K2X single phase watthour meter consists of the type "K" electromagnet, register and magnetically supported moving system mounted in a small bottom-connected die-cast enclosure.

The frame of the meter is of essentially the same design as the frame used in the types KA and KS single phase watthour meter but differs in that it is slightly smaller and has only a single pair of somewhat larger bar type magnets on the left hand side.

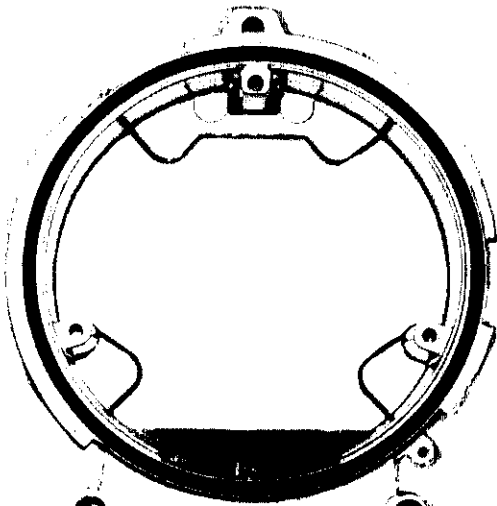
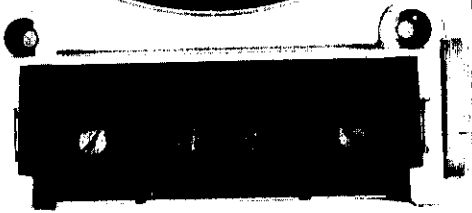
The terminal block is slightly smaller than the standard "A" block and is locked in place by two small projections moulded in the underside that fit into cutouts in a sheet of insulating material which is in turn fastened to the interior of the base by a small machine screw.

These meters are intended to be a replacement for the now obsolete type S3 and may be sealed by means of a hasp attached to the cover ring fitting over a lug moulded in the base

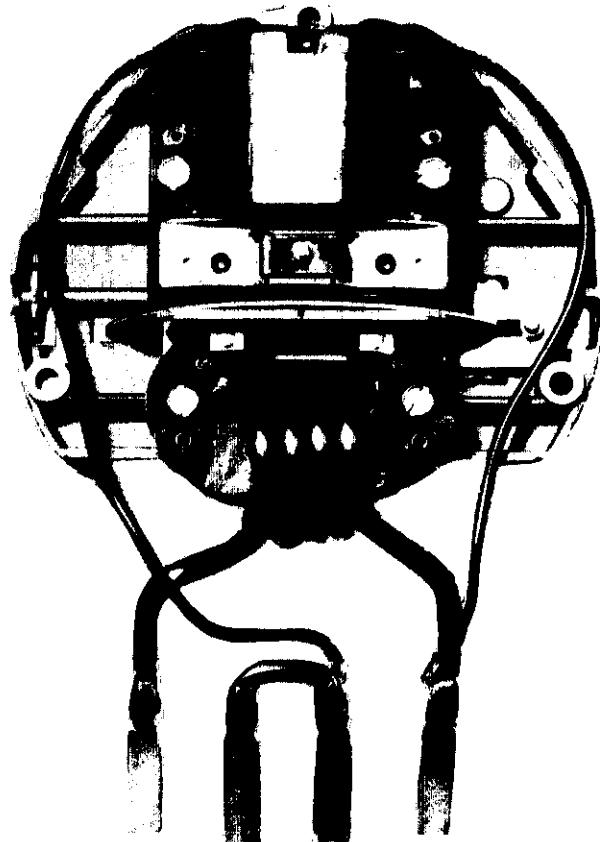
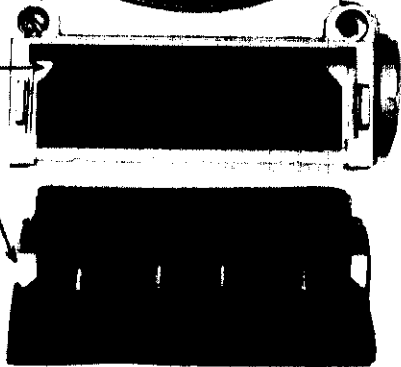


Terminal Block  
Locking Screw

Sealing Lug

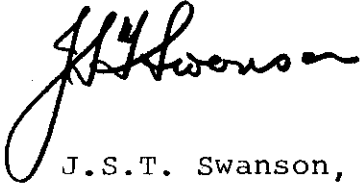


Locks




Approval granted to:

Sangamo Company Limited,  
Leaside,  
Toronto 17, Ontario



J.S.T. Swanson, P. Eng.  
Chief,  
Standards Laboratory  
Standards Branch



W.J.S. Fraser  
Chief  
Electricity and Gas Division  
Standards Branch

Ref: GL 1145-57/52-139