



Department of consumer and corporate affairs / Ministère de la consommation et des corporations



STANDARDS BRANCH - DIRECTION DES NORMES

NOTICE OF APPROVAL

E - 110

OTTAWA February 7, 1972.

CANADIAN GENERAL ELECTRIC 4-DIAL AND 5-DIAL CLOCK REGISTERS WITH TEST DIALS

Register Ratios

| | |
|-------------|---------|
| 4-dial x 10 | 138 8/9 |
| 5-dial x 1 | 13 8/9 |

Gear Train

| | | |
|-------------|---------------------------------------|--|
| 4-dial x 10 | $\frac{\text{driven}}{\text{driver}}$ | $\frac{100^{(2)}}{1^{(1)}} \times \frac{25}{20} \times \frac{50}{15} \times \frac{50}{15} \times \frac{110^{(4)}}{11^{(3)}}$ |
| 5-dial x 1 | $\frac{\text{driven}}{\text{driver}}$ | $\frac{100^{(2)}}{1^{(1)}} \times \frac{25}{20} \times \frac{60}{54} \times \frac{110^{(4)}}{11^{(3)}}$ |

For use on I-60A, I-60S, I-70A and I-70S Single Phase Watthour Meters

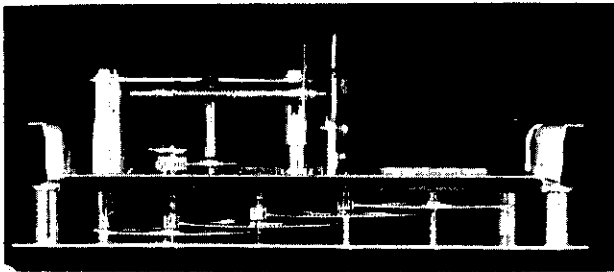
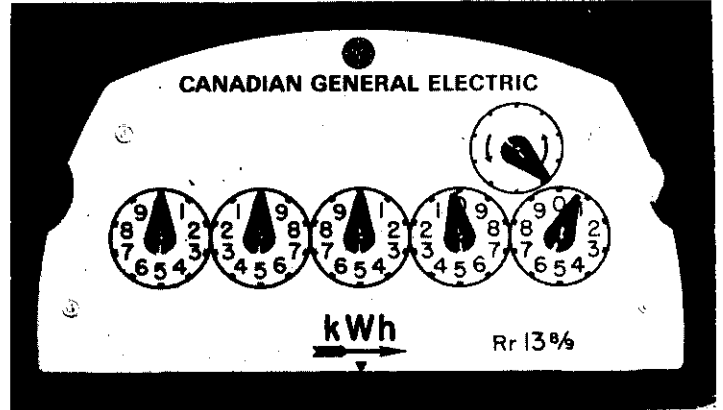
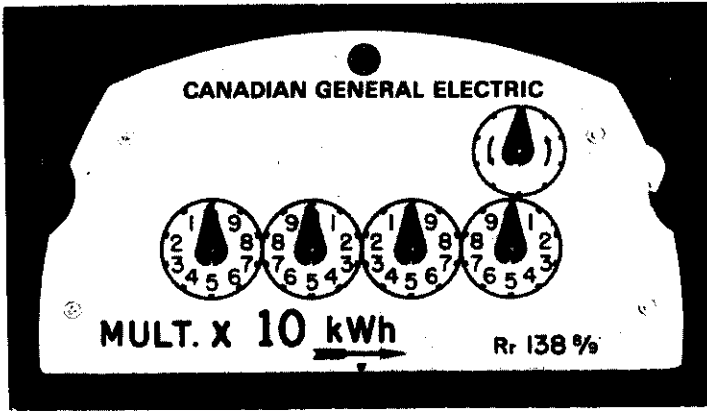
$$Kh = 7.2$$

- ① Disc shaft - single-start worm
- ② Take-off gear
- ③ Gear on test dial shaft
- ④ Gear on first reading dial shaft.

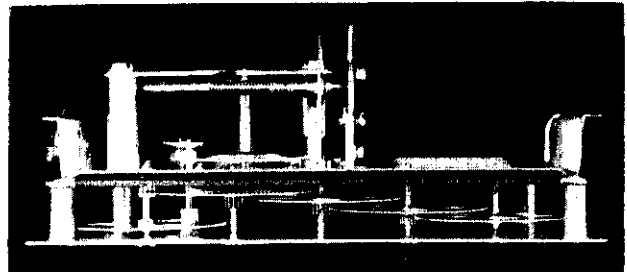
The 5-dial register is available with a circular mask on the 5th dial, which is to be removed and replaced by a pointer when the meter rating is changed to 2.0 - 200 amperes.

Description

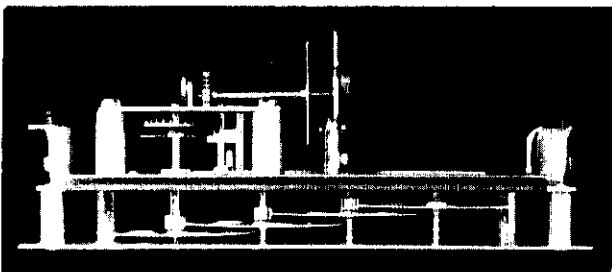
These registers are intended to supersede those presently approved for use on the I-70 single phase watthour meters and which are illustrated on page 2 of circular E-88.



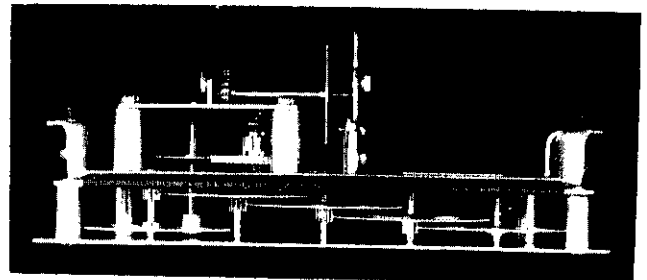
OLD



OLD



NEW



NEW

The new register is identifiable by its appearance; the symbol KWh is smaller and is located below the dials, whereas on the old register design the KWh was located above the dials.

The registers differ in that a cog-wheel drive is used in place of the former worm-wheel drive.

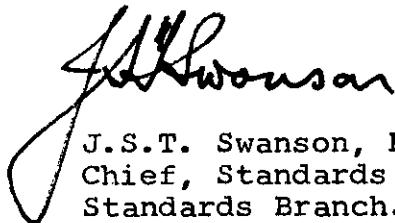
The illustrations on page 2 of this circular show the cog-wheel drive.

The effect of the new drive is to reduce the backlash of the test dial hand to a very small amount.

These registers are also approved for replacement on the I-60 design meters.

Approval granted to:

Canadian General Electric Co. Ltd.,
1130 Boulevard Charest,
Quebec 8, P.Q.


J.S.T. Swanson, P. Eng.,
Chief, Standards Laboratory,
Standards Branch.



W.J.S. Fraser,
Chief, Electricity & Gas Division,
Standards Branch.

Ref: SL-100-530 (AK)
1145-57/C2-M17