



Department of consumer and corporate affairs / Ministère de la consommation et des corporations



STANDARDS BRANCH - DIRECTION DES NORMES

**NOTICE OF APPROVAL
AVIS D'APPROBATION**

E-88-3

OTTAWA November 16, 1973

**CANADIAN GENERAL ELECTRIC TYPE "I-70S" SINGLE PHASE WATTHOUR
METER FOR USE WITH ADAPTER ON SINGLE PHASE 2-WIRE 120 VOLT
60HZ CIRCUITS**

Current Range	2.0-100 amperes
Voltage	120 Volts
Frequency	60 Hz
Wire	2
Disc Constant Kh	7.2 Watthours per rev.
Register Ratio*	13 8/9 5-dial x 1 clock with test dial
Adapter	3-wire to 2-wire, "S" to "A" base

* The register is identified by the symbol "KWh" located below the dials.

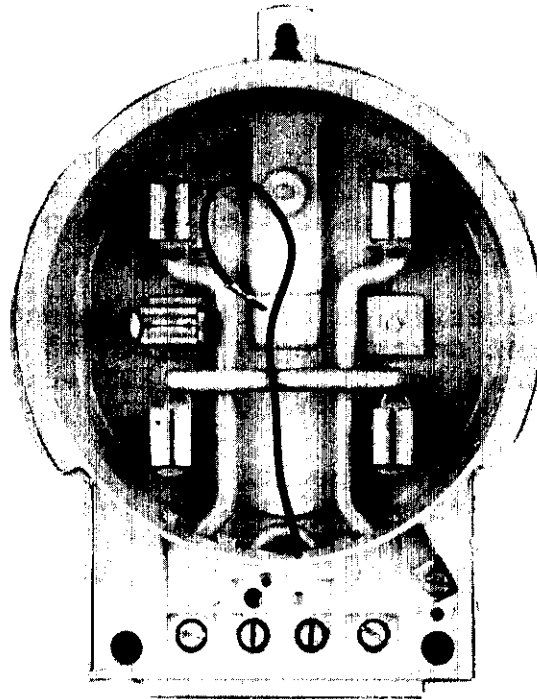
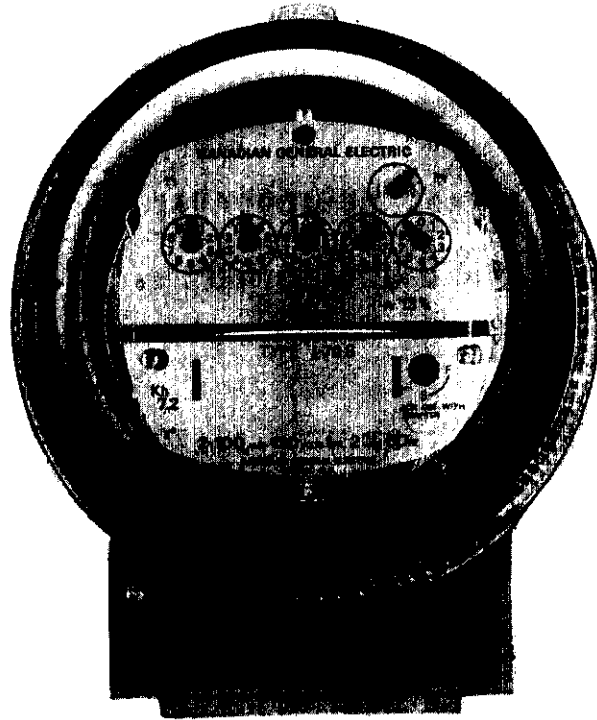
Description

The watthour meter covered by this Notice is a standard type I-70S of 2-200 ampere, 240 volt, 60 Hz rating that is permitted to be used with an adapter on a 2-wire, 120 volt, 60 Hz service.

The characteristics of the meter and the effect of the adapter socket on the registration of the meter are such that the meter must be verified on 120 volts when mounted on an adapter.

To emphasize the special handling required by this meter, and also distinguish it from the standard I-70S, the nameplate is marked 2-100 amp., 120 volts, 1 phase 2-wire, and the words "For use with adapter" are printed in red on the right hand side.

The adapter has standard "A" base dimensions and has internal jumpers to join the two current coils in series and connect them to the two outer terminals.



Another jumper joins the two inner terminals and is provided with a short potential lead terminated with a clip for attaching it to the RH test link.

Because this meter is a standard I-70S it is provided with two test links.

The connecting screw on the RH link, if present, must be removed and discarded and the potential lead attached.

The connecting screw on the LH test link must be tightened securely unless verification procedures require that it be backed off, in which case it is to be re-tightened after the testing is completed.

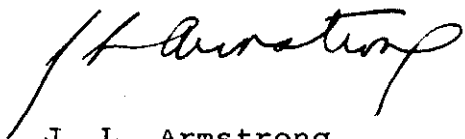
After verification, the meter is to be sealed in the normal way.

A sealing ring with provision for a utility seal holds the meter in the adapter, after which the utility can install the meter as they would a normal "A" based meter.

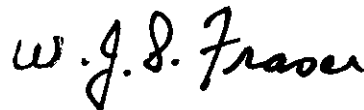
Any standard approved type I-70S single phase watt-hour meter rated at 2-200 amperes, 240 volts, 60Hz, 3-wire may be used with this adapter on a 100 ampere, 120 volt, 60Hz, 2-wire service provided it is equipped with a new nameplate as illustrated on page 2 of this notice and verified as outlined.

Approval granted to:

Canadian General Electric Company Ltd.,
1130 Boulevard Charest,
Quebec, 8, P.Q.



J. L. Armstrong,
Chief, Standards Laboratory,
Metrology & Laboratory Services



W.J.S. Fraser,
Chief, Electricity & Gas Division,
Metrology & Laboratory Services

Ref: GL 1145-57/C2-530
G 1145-57/C2-530 (AK)