



Department of consumer and corporate affairs / Ministère de la consommation et des corporations



STANDARDS BRANCH - DIRECTION DES NORMES

NOTICE OF APPROVAL

E-85

OTTAWA July 19, 1972

MODIFICATIONS TO THE FOLLOWING TYPES OF SANGAMO METERS

WY-, LY-, KYW-, KYL-, WLY-, KYWL-, KW-, KYR-

1. Change in the position of the reset arm and link assembly from the right hand side to the left hand side.

This change permits the reset arm assembly to extend into the opening below the scale and beyond the plane of the pointer. This gives more positive reset action and also takes care of a slight curvature in the glass cover.

2. On meters that use pressure type connectors in the current circuits, solder has been used to give a more positive connection.
3. A ground strap has been added to all socket type demand and combination demand-energy meters, to ground the meter element to prevent the reset knob becoming alive in the event of any electrical breakdown causing the frame to become "hot".

4. A change in the diode mounting panel. Due to difficulties in supply of the small red rectangular diode package with wire leads, Sangamo has re-designed the panel using a diode bridge package with in-line printed circuit board leads.

The new panel assembly was available during an interim period with the current diodes mounted on the back but this form was changed and all diodes are now mounted on the front.

Page 4 shows a type LYP with the new panel and a type KYLP with the interim arrangement. For all forms, the panels used for all meter types are identical, but will be mounted in the LY- meters in one way, and inverted in the type KY-.

Page 5 shows both forms.

The basic difference between meters intended for network service and those intended for 3 phase 3 wire service is a small jumper, also illustrated on page 5.

3 phase 3 wire meters have a jumper and network meters do not.

It is necessary as part of the verification procedure that a visual inspection of both types of meters be made to ascertain that a jumper has been installed if required.

In case of doubt you are requested to follow the procedure outlined in a circular letter dated June 24, 1969.

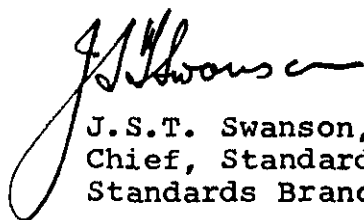
Illustrated on this notice are the new reset arm and link, the soldered pressure connectors, the grounding lug on an "S" base combination meter and the modified rectifier diode panels as they appear on types KYLP and LYP.

Following is a list of approved meters and the modifications that are incorporated in certain ratings of the type.

<u>Type</u>	<u>Approval Notice</u>	<u>Modification</u>
WY-	E-63-1	1, 2, 3
LY-	E-64	1, 2, 3, 4
KYW-	E-65-1	1, 2, 3
KYL-	E-66-1	1, 2, 3, 4
WLY-	E-70	1, 2, 3, 4
KYWL-	E-71	1, 2, 3, 4
KW-	E-92-1	1, 2, 3
KYR-	E-96	2, 3

Approval granted to:

Sangamo Company Limited,
Leaside, Toronto 17, Ontario.

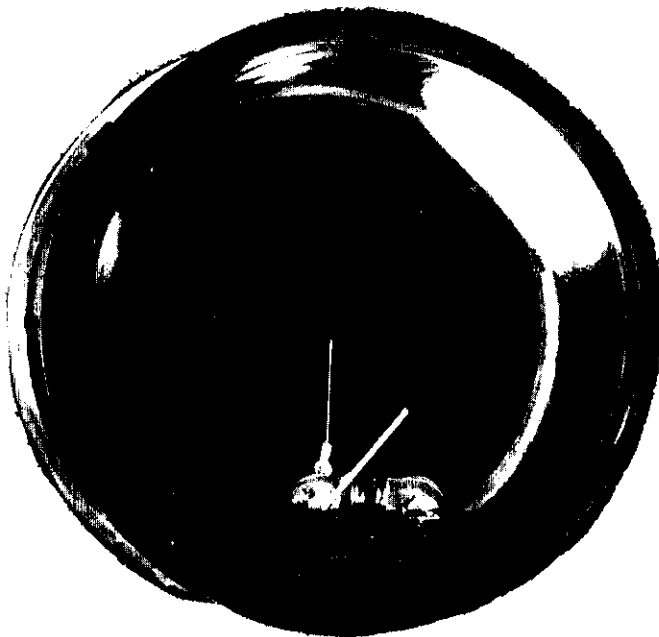
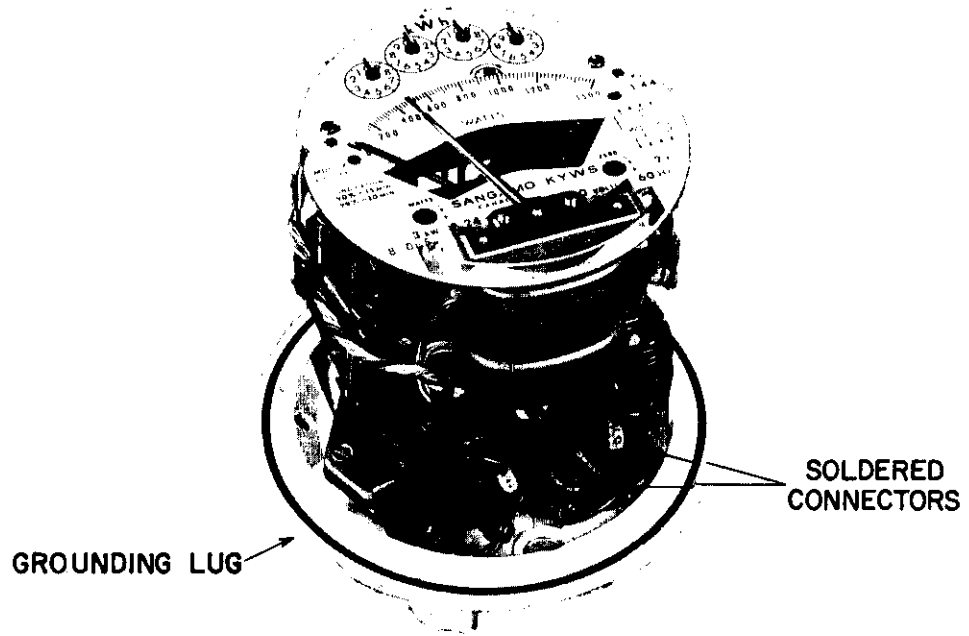


J.S.T. Swanson, P. Eng.,
Chief, Standards Laboratory,
Standards Branch.

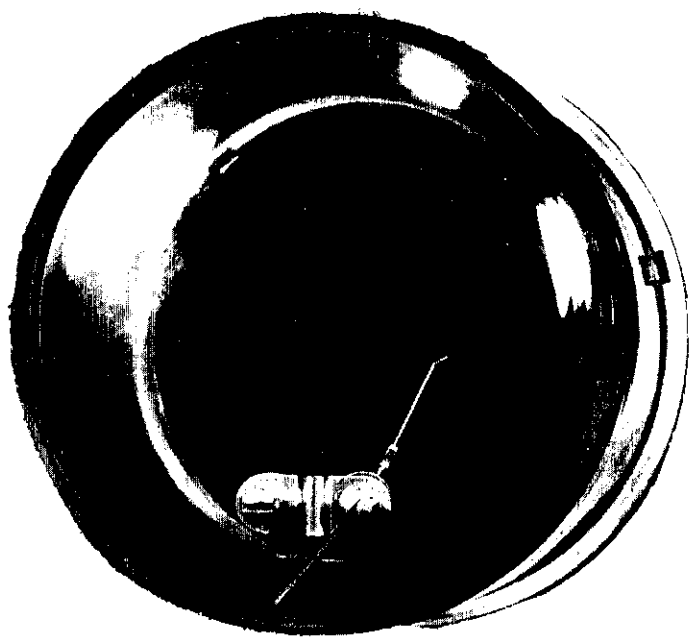


W.J.S. Fraser,
Chief, Electricity & Gas Division,
Standards Branch.

Re: SE-85-6
SL-100-93

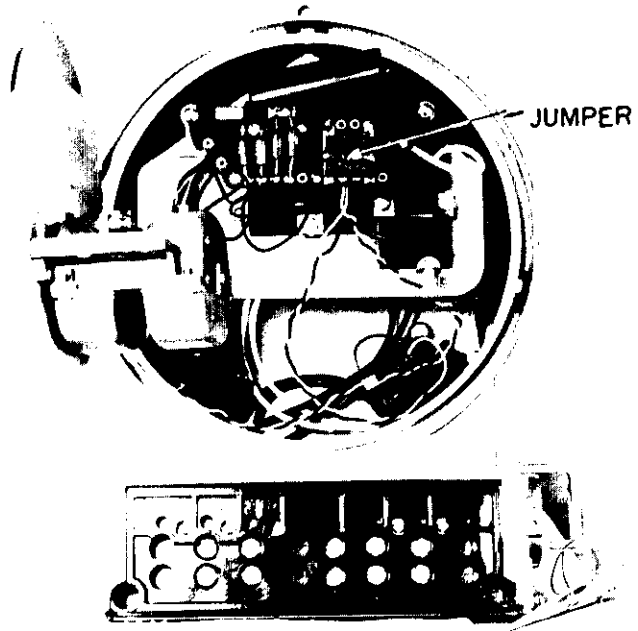


NEW

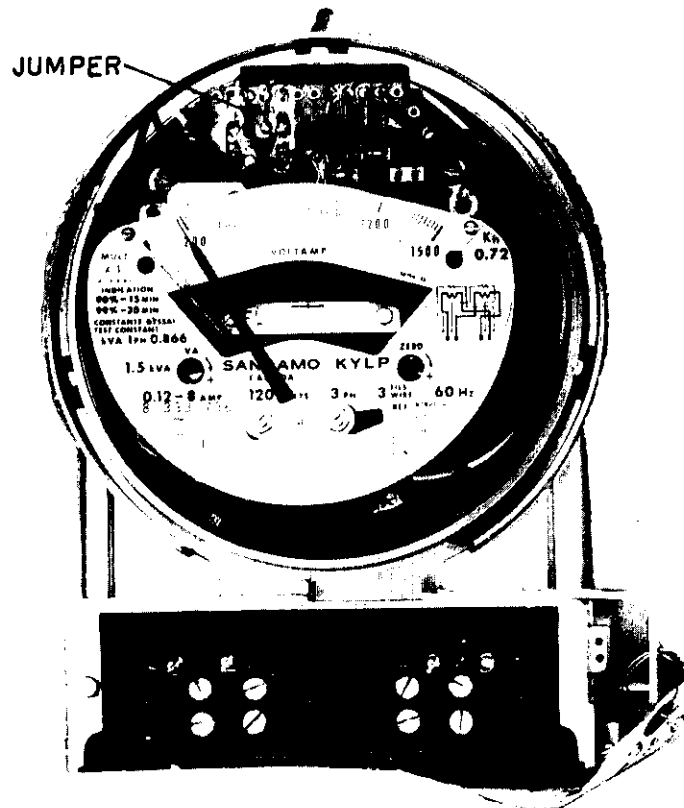


OLD

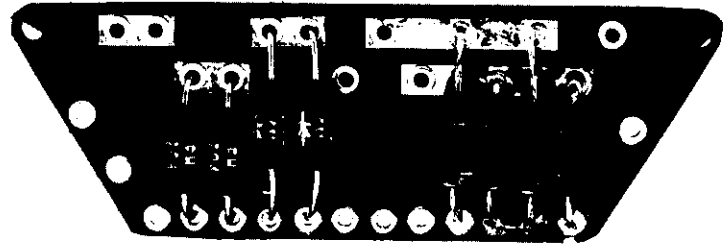
LYP



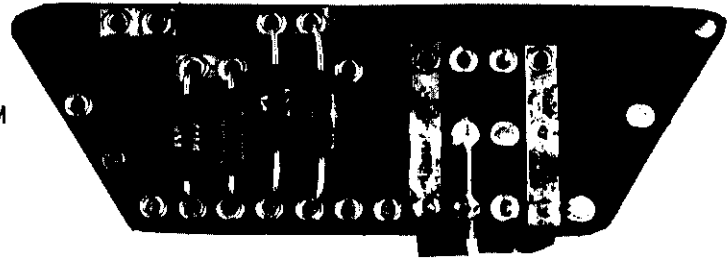
KYLP



ORIGINAL



INTERIM



FINAL



DIODE MOUNTING PANELS

PHOTOS SHOW ARRANGEMENT FOR LY-METERS
PANELS FOR KY-METERS ARE IDENTICAL BUT INVERTED.