



DEPARTMENT OF TRADE AND COMMERCE
STANDARDS BRANCH

E-66

OTTAWA February 20, 1963.

NOTICE OF APPROVAL

FOR

SANGAMO TYPE "KYL-" COMBINATION POLYPHASE
WATTHOUR METER AND THERMAL KVA DEMAND METER

Apparatus

Types KYLA and KYLS

Network for use on 2 wires and neutral of a 3-phase 4-wire Y circuit

Voltages	120, 240, 277 and 345 volts		
Current Range (amperes)	0.6-50	1.2-100	2.5-200
* Full Scale Demand (KVA)	12	24	43
Multiplier	10	20	40
Disc constant Kh	3.6	7.2	14.4
Register Ratio	333-1/3	333-1/3	333-1/3
Scale	1200 voltamperes and 1.2 kva		
Single Phase KVA Test Constant	1.0		

Note: Network meters must not be used on a 3-phase 3-wire service

Types KYLF# and KYLS

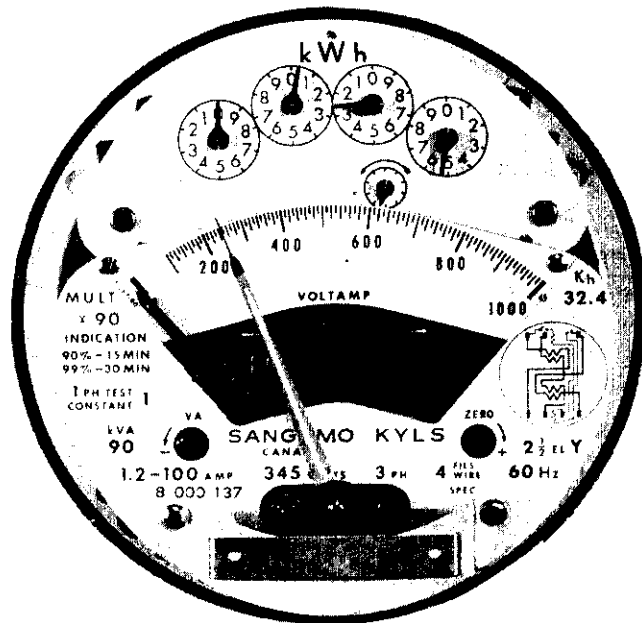
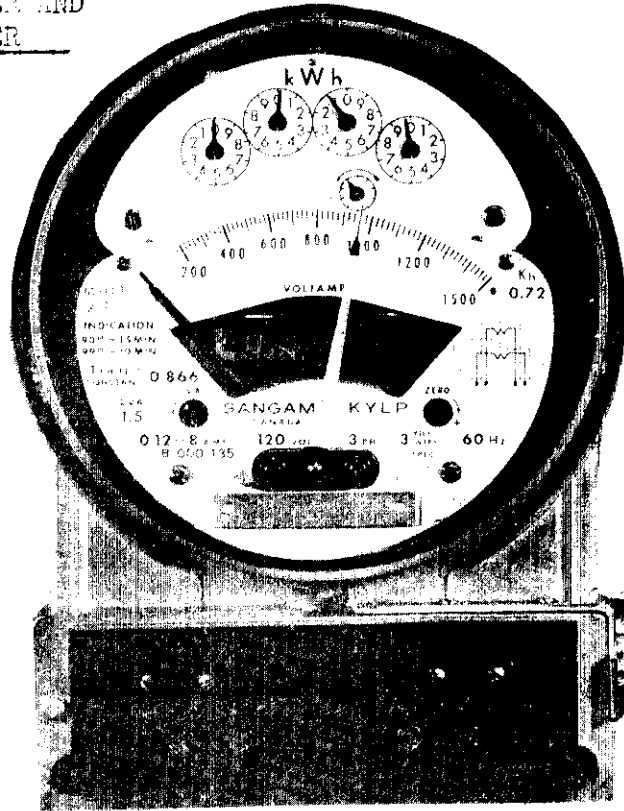
For use on a 3-phase 3-wire service

Voltages	120, 240, 480 and 600 volts				
Current Range (amperes)	0.12-8	0.3-25	0.6-50	1.2-100	2.5-200
* Full Scale Demand (KVA)	1.5	5	10	20	40
* Multiplier	1	5	10	20	40
* Disc Constant Kh	0.72	1.8	3.6	7.2	14.4
Register Ratio	166-2/3	333-1/3	333-1/3	333-1/3	333-1/3
Scale	1500 voltamperes and 1.5 KVA on 8 amp. meters. 1000 voltamperes and 1.0 KVA on other ratings.				
Single Phase KVA Test Constant	0.866				

Maximum current Rating on P base meters is 100 amperes.

SANGAM TYPE "KYL-" COMBINATION
 POLYPHASE WATTHOUR METER AND
 THERMAL KVA DEMAND METER

F-66



Note: Meters designed for use on a 3-phase 3-wire service must not be used on a network service or on a 3-phase 4-wire Y service with delta-connected CT's.

2 1/2 Element Y

For use on a 3-phase 4-wire Y service

Voltages	120, 240, 277 and 345 volts				
Current Range (amperes)	0.12-8	0.3-25	0.6-50	1.2-100	2.5-200
* Full Scale Demand (KVA)	3.0	9	18	36	72
* Multiplier	2	7.5	15	30	60
* Disc Constant Kh	1.08	2.7	5.4	10.8	21.6
Register Ratio	222-2/9	333-1/3	333-1/3	333-1/3	333-1/3
Scale	1500 voltamperes and 1.5 KVA on 8 ampere meters 1200 voltamperes and 1.2 KVA on all other ratings				
Single Phase KVA Test Constant	1.0				
Frequency (all ratings)	50 hz and 60 hz				
Indication (all ratings)	90% in 15 minutes, 99% in 30 minutes				
	All registers have test dials.				

* Full scale value, multiplier and disc constant are given for 120 volts.

For other voltages multiply by the voltage ratio (for 277 volts use 2.5).

Multiplier applies to both watt-hour and demand readings.

Meters for use on 3-phase 3-wire, and 3-phase 4-wire Y services and rated at 0.12-8 amperes are available in "F" base mounting and all the voltages listed for the types KYLP and KYLS.

All registers have test dials.

Description

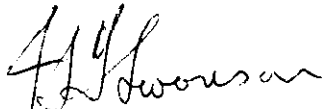
The type "KYL-" Combination Polyphase Watthour Meter and Thermal "KVA" Demand Meter consists of the type "KY-" polyphase watthour meter receiving approval under "E-60" with the thermal demand element of the type "LY-" receiving approval under E-64.

As the demand section of the type "KYL-" is a rectifier type of instrument, it is independent of power factor but is subject to errors due to waveform distortion, and should only be verified on a test board known to produce a waveform having low harmonic content, particularly if a wattmeter or rotating standard is used as a reference.

The "1 ph test constant" shown in the illustrations will be changed to "Constante D'essai, Test Constant KVA 1 ph".

Approval granted to:

Sangamo Company Limited,
Leaside, Toronto 17



J. S. T. Swanson,
Chief, Standards Laboratory,
Standards Branch.



W. J. S. Fraser,
Chief, Electricity and Gas Division,
Standards Branch.

Reference SL-100-93A