



DEPARTMENT OF TRADE AND COMMERCE
STANDARDS BRANCH

E-65

OTTAWA February 20, 1963

NOTICE OF APPROVAL

FOR

SANGAMO TYPE "KYW-" COMBINATION POLYPHASE WATTHOUR
METER AND THERMAL KILOWATT DEMAND METER

Apparatus

Types KYW and KWS

2-Element Network for use on 2-wires and neutral of a 3-phase 4-wire Y service

	Voltages	120, 277 and 345 volts		
	Current Range (amperes)	0.6-50	1.2-100	2.5-200
*	Full Scale Demand (KW)	12	24	48
*	Multiplier	10	20	40
*	Disc constant Kh	3.6	7.2	14.4
	Register Ratio	333-1/3	333-1/3	333-1/3
	Scale	1200 watts and 1.2 KW		

Types KYWP[#] and KYWS

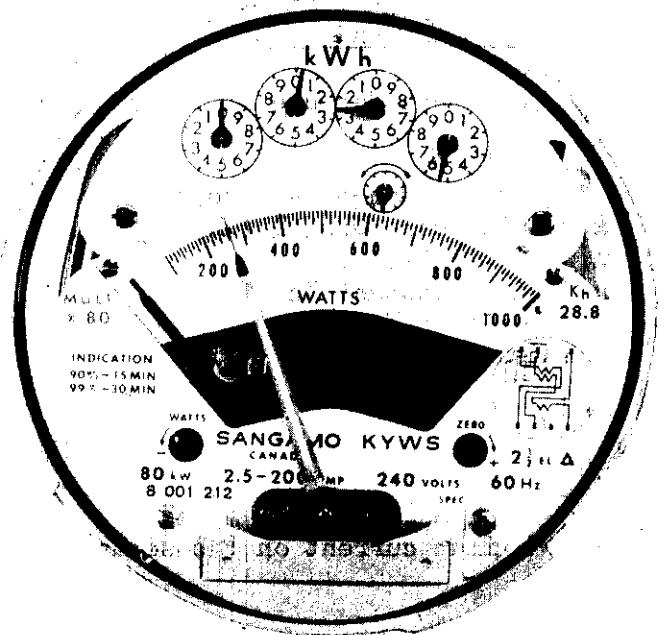
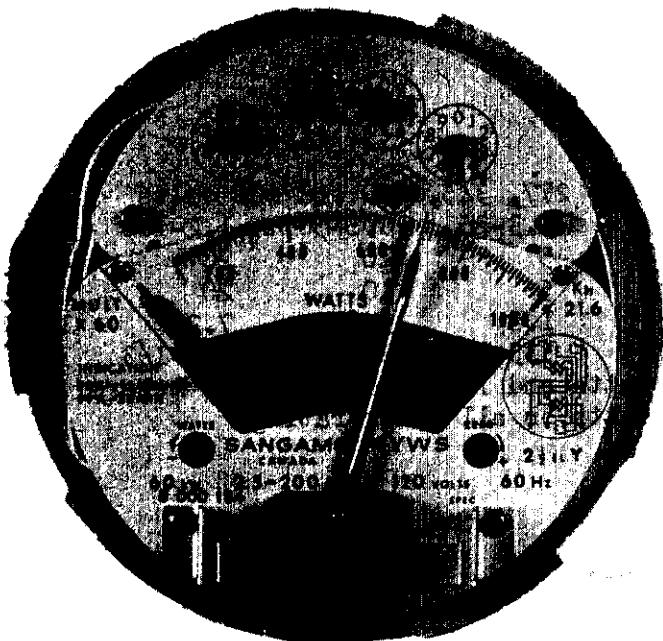
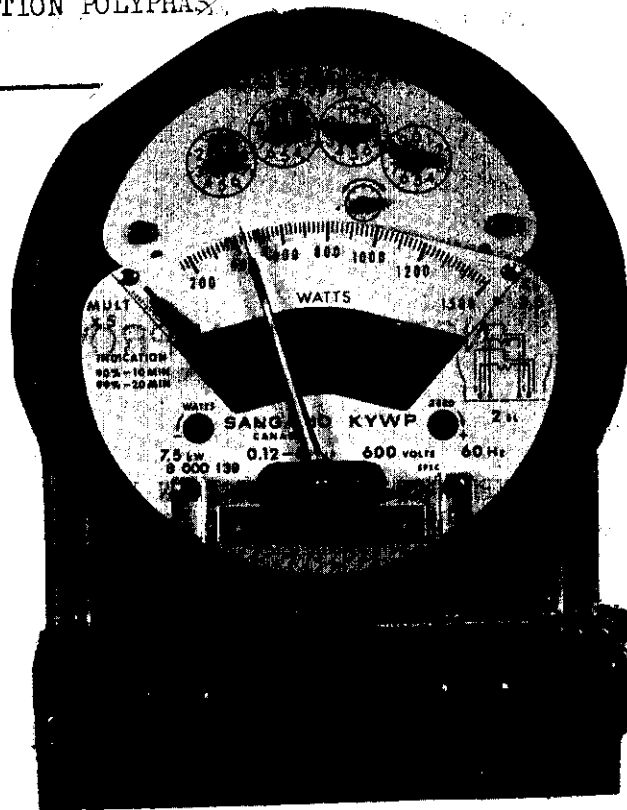
2-Element for use on 3-phase 3-wire service

	Voltages	120, 240, 277, 345, 480 and 600 volts				
	Current Range (amperes)	0.12-8	0.3-25	0.6-50	1.2-100	2.5-200
*	Full Scale Demand (KW)	1.5	5	10	20	40
*	Multiplier	1	5	10	20	40
*	Disc constant Kh	0.72	1.8	3.6	7.2	14.4
	Register Ratio	166-2/3	333-1/3	333-1/3	333-1/3	333-1/3
	Scale	1500 watts and 1.5 KW on 8 ampere meters 1000 watts on all other ratings.				

Maximum current on P base meters is 100 amperes.

SANGAMO TYPE "KYW-" COMBINATION POLYPHASE
WATTHOUR METER AND THERMAL
KILOWATT DEMAND METER

E-25



2 1/2 Element wye for use on 3-phase 4-wire Y service

Voltages	120, 240, 277 and 345 volts				
Current Range (amperes)	0.12-3	0.3-25	0.6-50	1.2-100	2.5-200
* Full Scale Demand (KW)	3.0	9	18	36	72
* Multiplier	2	7.5	15	30	60
* Disc constant Kh	1.08	2.7	5.4	10.8	21.6
Register Ratio	222-2/9	333-1/3	333-1/3	333-1/3	333-1/3
Scale	1500 watts and 1.5 KW on 3 ampere meters 1200 watts and 1.2 KW on all other ratings				

2 1/2 Element delta for use on 3-phase 4-wire delta service

Voltage	240 volts				
Current Range (amperes)	0.12-3	0.3-25	0.6-50	1.2-100	2.5-200
* Full Scale Demand (KW)	3.0	10	20	40	80
* Multiplier	2	10	20	40	80
* Disc constant Kh	1.44	3.6	7.2	14.4	28.8
Register Ratio	166-2/3	333-1/3	333-1/3	333-1/3	333-1/3
Scale	1500 watts and 1.5 KW on 3 ampere ratings 1000 watts and 1.0 KW on all other ratings				

Frequency 50 hz and 60 hz (all types and ratings)
Indication (all ratings) 90% in 15 minutes. 99% in 30 minutes

* Full scale value, multiplier and disc constant are given for 120 volts, except on 2 1/2 element delta, where voltage is 240. For other voltages multiply by the voltage ratio (for 277 volts use 2.5).

Multiplier applies to both watthour and demand readings.

All registers have test dials.

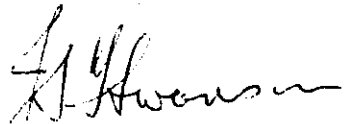
The 2-element and 2 1/2 element 0.12-3 ampere meters are available in "F" base mounting in all the voltages listed for types KYWP and KYWS.

Description

The type "KYW" Combination Polyphase Watthour Meter and Thermal Kilowatt Demand Meter consists of the type "KY-" polyphase Watthour Meter receiving approval under E-60 with the thermal demand element of the type WY- receiving approval under circular E-63.

Approval granted to:

Sangamo Company Limited,
Leaside, Toronto 17



J. S. T. Swanson,
Chief, Standards Laboratory,
Standards Branch.



W. J. S. Fraser,
Chief, Electricity and Gas Division,
Standards Branch.

Reference SL-100-93A