



DEPARTMENT OF TRADE AND COMMERCE
STANDARDS BRANCH

E-16

OTTAWA August 24, 1965.

NOTICE OF APPROVAL

FOR

SANGAMO TYPES "CJ3A" AND "CJ3S" SINGLE PHASE WATTHOUR METERS

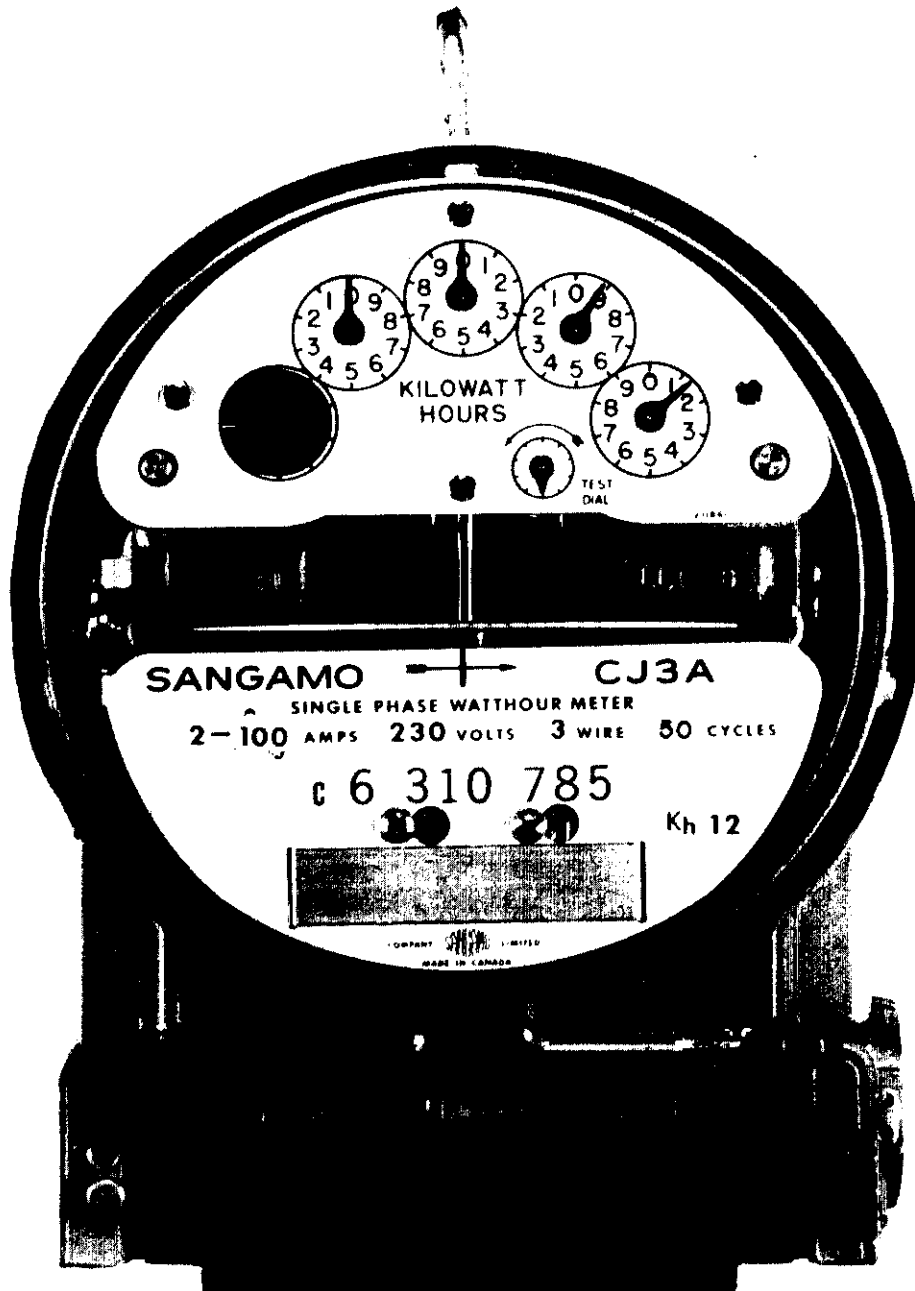
Apparatus

Rating				
† Current Range (amperes) #	0.12-10	0.5-50	0.75-100	2.0-200
‡ Voltage	115, 230, 345	115	115, 230, 345	115, 230, 345
Wire	2 or 3 2 for 345V	2	2 or 3 2 for 345V	2 or 3 2 for 345V
Frequency	50 and 60 cycles for all ratings			
Disc Constant	0.3 for 115V 0.6 for 230V 0.9 for 345V	1.5	3 for 115V 6 for 230V 9 for 345V	6 for 115V 12 for 230V 18 for 345V
 Register Ratios:				
* Clock type 4-dial x 1 and 4/5 dial x 1	333-1/3 for 115V 166-2/3 for 230V 111-1/9 for 345V	66-2/3	33-1/3 for 115V 16-2/3 for 230V	16-2/3 for 115V
Clock type 4-dial x 10	---	---	---	166-2/3 for 115V 83-1/3 for 230V 55-5/9 for 345V
Clock type 5-dial x 1	---	---	---	16-2/3 for 115V 8-1/3 for 230V 5-5/9 for 345V
Cyclometer type x 1	111-1/9 for 345V 416-2/3 for 115V 208-1/3 for 230V 138-8/9 for 345V	---	11-1/9 for 345V 41-2/3 for 115V 20-5/6 for 230V	20-5/6 for 115V
Cyclometer type x 10	---	---	---	208-1/3 for 115V 104-1/6 for 230V 69-4/9 for 345V
** Type of Base	A and S	A and S	A and S	S for 115V A and S for 230V & 345V

† 2.0-200A current range also applies to the dual-rated 2.0-200A (2.0-100A) meters on 230V, described in Circular S.EA.601.

Transformer type. Other ratings self-contained.

SANGAMO TYPES "CJ3A" AND "CJ3S" SINGLE PHASE WATTHOUR METERS



- 2 -

° 230 volt 3-wire meters may be used on 115 volt 2-wire or a temporary measure. It is not necessary to break the Government seal to do this, but it will be necessary in the case of the "A" based types to drill out the holes in the terminal block to permit insertion of the potential lead (S). A separate jumper is required in the case of the "S" based types.

* Meters with 120 volt ratings, or multiples thereof, are also approved for all capacities.

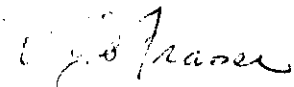
* The 4/5 dial clock register is described in Circular S-EA.601


** Modification to the "S" type CJ3 base is covered in Circular S-EA.607

Description

This Circular supercedes Circulars S-EA.483, S-EA.509, S-EA.596, S-EA.601 and S-EA.607 and includes in addition types CJ3A and CJ3S, 2-wire 345V meters, and thus covers all approved ratings of the types CJ3A and CJ3S.

Approval granted to: Sangamo Company Limited,
Leaside,
Toronto 17, Ontario.


W.J.S. Fraser,
Chief, Standards Laboratory,
Standards Branch.


K. Cryer,
Chief, Electricity & Gas Division,
Standards Branch.

Ref. SL-100-887J