



DEPARTMENT OF TRADE AND COMMERCE
STANDARDS BRANCH

E-15

OTTAWA August 24, 19 65.

NOTICE OF APPROVAL

FOR

CANADIAN GENERAL ELECTRIC TYPES "I60A" AND "I60S" DUAL-RATED
SINGLE PHASE WATTHOUR METERS

Apparatus

Current Ranges	1.0-200 amperes (1.0-100 amperes)*, 2.0-200 amperes
Voltage	230 or 240 volts
Frequency	60 cycles
Wire	3
Disc constant Kh	7.2 watthours per rev.
Register Ratio	138-8/9 4-dial x 10 ^o 13-8/9 5-dial x 1 [#]
Register Type	Clock and cyclometer ^o

* Marked on small removable 1.0-100 or (100) tab.

If a clock type register is installed, the 5th dial may be covered with a circular mask when the meter is presented as 1.0-100 amperes with the tab in place. If the meter is presented as 1.0-200 or 2.0-200 amperes, the register may be a clock 4-dial x 10, a clock 5-dial x 1 or may be the "Q-10" cyclometer register 4-dial x 10 and Rr of 138-8/9. 5-dial x 1 clock registers without test dial are approved for use on meters of 200-ampere rating only.

Description

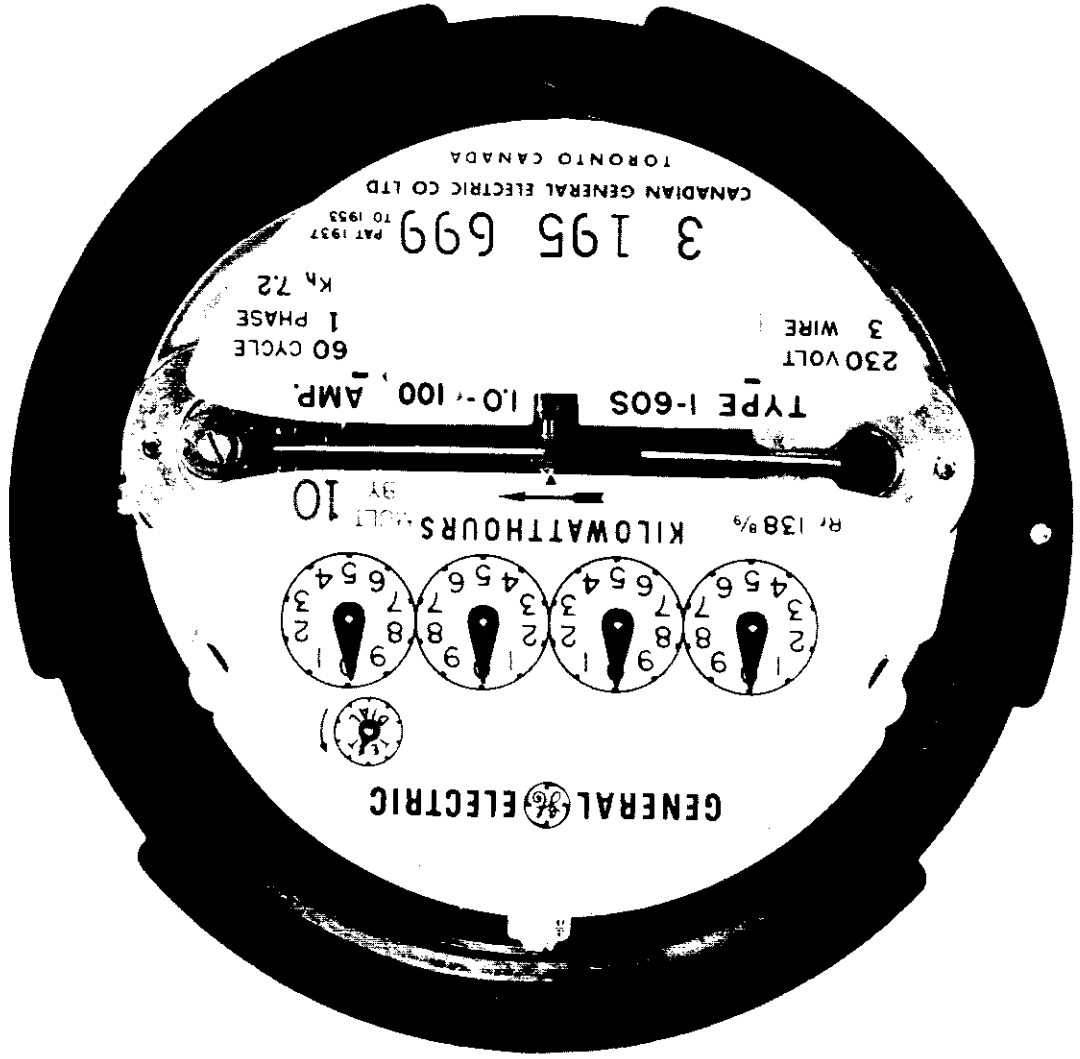
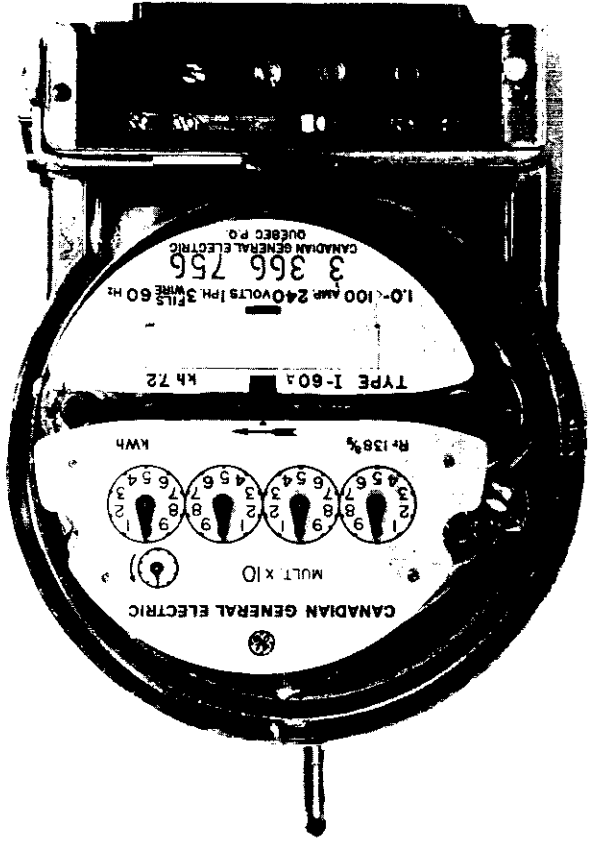
The type I-60 dual-rated 1.0-200.(1.0-100) ampere meter is similar in design to the "I-60S" voltage compensated "VC" watthour meter which received approval under S-EA.469. The I-60S dual-rated model incorporates the modifications listed under S-EA.576 and may have one or two test links.

The purpose of the dual-rating is to procure a more universal meter that can be used on either 100-ampere or 200-ampere 3-wire services. To do this, the minimum current has been reduced to 1.0 ampere along with a reduction in the size of the anti-creep holes in the disc. The dual-rated "I-60-" is not approved in the voltage compensated design and is not intended to be used on 2-wire 115-120 volt service.

...../2

CANADIAN GENERAL ELECTRIC TYPES "I60A" AND "I60S" DUAL-RATED

SINGLE PHASE WATT HOUR METERS



- 2 -

Description (Con'd)

Changing the current range from 1.0-100 amperes to 1.0-200 amperes is done by removing the "100" tab covering the "200" on the nameplate. It is then necessary to see that the register is either a 5-dial with a multiplier of 1 or a 4-dial with a multiplier of 10.

Some meters may have the current range marked as 2.0-200 amperes as requested by some customers, but this does not indicate any change in the meter.

This meter may be presented for verification equipped with (a) a 5-dial x 1 register with test dial, (b) a 5-dial x 1 register without test dial, (on 200-ampere rating only), (c) a 4-dial x 10 register with test dial, (d) a convertible 4/5 dial x 1 register with test dial, or (e) a 4-dial x 10 "Q-10" cyclometer register with test dial, Rr 138-8/9. (SD-EA.191).

The 4/5 dial register may be supplied as a 4-dial x 1 register for 100 ampere capacity meters with the 5th dial covered by a mask.

Where the meter would be used initially as a 100-ampere meter but at some future date may be used as a 200-ampere meter, the mask can be removed and replaced by a pointer on the 5th dial.

The convertible 4/5 dial x 1 register is approved for use with any approved Canadian General Electric watt-hour meter of suitable range.

Owing to the "storage and release" effect of the magnets used in the "Q-10" cyclometer register, the first digit of the reading dial may be "out-of-step" with the test dial. This is characteristic of the design and is not a defect. To avoid the backlash associated with this effect it is recommended that positions 9 and 4 on the first reading dial be avoided when dial testing this register.

This circular cancels and replaces circular S-EA.580 (amended) of September 25, 1963 to include I-60A meters.

Approval granted to: The Canadian General Electric Company Limited,
Quebec 8,
P. Q.

W. J. S. Fraser
W.J.S. Fraser,
Chief, Standards Laboratory,
Standards Branch.

K. Cryer
K. Cryer,
Chief, Electricity & Gas Division,
Standards Branch.